

Institute for the Protection of Cultural Monuments of Serbia - Belgrade
in Cooperation with the Union of Architects of Serbia



PROGRAMME
for a public international urban-planning and architectural competition for the
DEVELOPMENT OF BELO BRDO ARCHAEOLOGICAL PARK
WITH PRELIMINARY DESIGNS FOR THE VISITOR CENTRE AND THE SCIENTIFIC AND RESEARCH CENTRE

March 2022

PROGRAMME

for a public international urban-planning and architectural competition for
DEVELOPMENT OF BELO BRDO ARCHAEOLOGICAL PARK
WITH PRELIMINARY DESIGNS FOR THE VISITOR CENTRE AND THE SCIENTIFIC AND RESEARCH CENTRE

Party Ordering the Competition

Institute for the Protection of Cultural Monuments of Serbia
Radoslava Grujića 11, Belgrade, Serbia
www.heritage.gov.rs

Party Organising the Competition

Union of Architects of Serbia
Kneza Miloša 7a/III, Belgrade
www.u-a-s.rs

CONTENTS

1	INTRODUCTION	4
2	COMPETITION REASON AND GOAL	4
3	COMPETITION SUBJECT AND SCOPE	5
4	VINČA - BELO BRDO ARCHAEOLOGICAL SITE	8
4.1	Vinča Culture	8
4.2	Cultural and historical context of the site	9
4.3	Summarised overview of the explorations	16
4.4	Summary of the archaeological explorations	21
4.5	Legal protection of the archaeological site	22
5	GENERAL CHARACTERISTICS OF THE AREA - BROADER AND DIRECT SURROUNDINGS	24
5.1	History and the development of the area, architectural and cultural heritage	25
5.2	Broader and direct surroundings – current situation	25
5.3	Broader and direct surroundings - potentials and the planned situation	27
5.4	Current planning documentation in the area covered by the competition and in the direct surroundings.....	28
6	SPECIFIC CHARACTERISTICS OF THE AREA	30
6.1	Natural characteristics of the area.....	30
6.2	Green areas and watercourses	32
6.3	Traffic	33
6.4	Infrastructure	35
6.5	Nature conservation and environmental protection.....	36
6.6	Protection of the cultural heritage	37
7	AREA CHARACTERISTICS – COMPETITION SCOPE	38
7.1.1	Current state of affairs – location and the construction fund at the location.....	38
8	TERMS OF REFERENCE	51
8.1	Competition subject, general guidelines and recommendations.....	51
8.1.1	Obligations as regards the forming of the space.....	51
8.2	Programme elements and guidelines for the Belo Brdo Archaeological Park complex	52
8.2.1	Programme elements and guidelines for the subunit of the Archaeological Site	53
8.2.2	Programme elements and guidelines for the subunit of the Visitor Centre	57
8.2.3	Programme elements and guidelines for the subunit of the Neolithic Scientific Research Centre	59

8.2.4	Programme elements and guidelines for the subunit Archaeo Park and the main parking lot of the complex	64
8.2.5	Programme elements and guidelines for the subunit of the Danube coastal – revetment, promenade (arranged free and coastal areas activated with different contents) and pier	66
8.2.6	Programme elements and guidelines for the development of the left and right riverbanks of the Bolečica (as a design proposal)	69
8.3	Special programme conditions, guidelines and recommendations for all subunits	70
8.3.1	Urban-planning and parametric requirements	70
8.3.2	Guidelines and recommendations for traffic areas, stationary and pedestrian traffic	77
8.3.3	Guidelines and recommendations in relation to the engineering and geological conditions..	78
8.3.4	Guidelines and recommendations for the treatment of the installations and the equipment at the site	79
9	CRITERIA FOR THE ASSESSMENT OF THE ENTRIES	79
10	COMPETITION RULES	80
10.1	Competition eligibility criteria	80
10.2	Terms for conducting the competition	80
10.3	Contents of the competition assignment	80
10.4	Method of technical and design processing of the competition assignment.....	83
10.5	The author’s envelope - Contents of the competitors’ statement.....	84
10.6	Competition deadlines	85
10.7	Type and amount of awards	85
10.8	Composition of the Jury	86
10.9	Final provisions	86
11	ATTACHMENTS TO THE PROGRAMME – BLUEPRINTS AND THE ACCOMPANYING DOCUMENTATION	86

1 INTRODUCTION

The protection of the archaeological heritage in Serbia ranges from continuous archaeological excavations and surveying to individual attempts to present the archaeological remains on the spot. The institutions in charge and the Ministry of Culture and Information of the Republic of Serbia are putting in significant efforts to make sure that the sensitive area of the presentation of archaeological heritage on site, which includes and aims to have the presence of visitors, is in optimal balance and that such conditions are provided in which all participants, researchers, curators, conservation experts, local community and visitors take part equally and in harmony.

Announcing this competition is one of the steps in achieving the goal of making Belo Brdo archaeological site in Vinča a well-developed archaeological park with various purpose-made elements. These will enable visitors to see and understand how people used to live in the Neolithic era, and researchers to apply and develop modern methodologies in the exploration of this multi-layered prehistoric habitat that has been going on without interruption for over a century.



Fig.1. Vinča, Archaeological explorations, 1911. Source: *Vinča – prehistoric metropolis: 1908-2008 explorations, Belgrade 2008, p. 70*

2 COMPETITION REASON AND GOAL

The **reason** for announcing the competition is the need to re-examine the potentials and affirm the possibilities of setting up and developing an Archaeological Park in a specific area, as one of the strategic national projects aimed at preserving archaeological heritage and as a support to the activation of cultural, archaeological and congress tourism in connection with the subject site. By preserving the authentic remains of the archaeological site, by their programme-based revival, as well as the accompanying tourist contents and infrastructural development, it is necessary to satisfy both the current and the future needs of the site for the purpose of further explorations and attracting of visitors.

“Belo Brdo” archaeological site in Vinča constitutes an immovable cultural property of exceptional importance for the Republic of Serbia (“The Official Gazette of the SRS,” no. 14/79).

The **goal** of the competition is to select, in line with the Terms of Reference, programme requirements, potentials of the site and especially the significance and the values of the archaeological heritage site (cultural property), the most adequate urban-planning and architectural design for the *Belo Brdo Archaeological Park* complex in Vinča. It is expected that the competition solution will integrate all of the existing specificities of the cultural property into a contemporary, authentic and recognisable multifunctional complex that corresponds to the surroundings and improves the values of the ambience.

A specific goal of the competition is to preserve the cultural heritage through a spatial and programme organisation that provides conditions for bringing the topic and the period of the civilisation development closer to the visitors through different modalities – *Archaeological Site* at the site itself, *Archaeo Park* as the

place of interpretation of Vinča Culture's way of life, *Visitor Centre* as the place of presentation of the findings, and *Neolithic Scientific Research Centre* as the place of enhancing the research of Neolithic cultures through a multidisciplinary approach, additional education and training, and popularisation of the included scientific fields.

A goal of the competition solution is also to affirm a symbolic idea of new connections, modern communications and progress through the current potentials of site, in line with the cultural and historical context, modern tendencies in the field of cultural heritage presentation, and the significance and development of the subject site.

The selected designs will constitute the basis for the preparation of the urban-planning, technical and project documentation for the needs of the realisation of the development and construction of Belo Brdo Archaeological Park.



Fig. 2. Photograph of the competition area Source: Archives of the Institute for the Protection of Cultural Monuments of Serbia

3 COMPETITION SUBJECT AND SCOPE

The **subject** of the competition is a preliminary design for the Belo Brdo Archaeological Park complex in Vinča with buildings for the Visitor Centre and the Neolithic Scientific and Research Centre, and it includes:

- Preliminary urban-planning and architectural design for the area of the Belo Brdo Archaeological Park complex,
- Preliminary design for the mobile elements and objects supporting the archaeological site and arrangement of the Protected surroundings of Archaeological site
- Preliminary architectural design for the Visitor Centre's building with associated outdoor space
- Preliminary architectural design for the Neolithic Scientific Research Centre's building with associated outdoor space
- Preliminary design for the Archaeo Park area and the main parking of complex with accompanying facilities

- Preliminary design for the development of the coastal zone of the Danube in the area of Belo Brdo Archaeological Park – promenade, pier and revetment

The subject of the competition is also a preliminary design for the arrangement of the left and right banks of the Bolečica river adjacent to the zone covered by the competition, the area directly next to the traffic connection between the subunit of the Neolithic Scientific Research Centre and the coastal of the river Bolečica, as well as the area of the Danube coast from the border of the competition scope upstream in the length of about 600m, at the poll based level design.



Fig. 3. Orthophoto image with the competition scope

The competition **scope** for Belo Brdo Archaeological Park in Vinča is shaped up by several interconnected spatial segments. The largest part of the area is bordered by the Danube (low water regulation line) on the east side – from the confluence with the Bolečica along the zone of the archaeological site (1st and 2nd degree of protection), then, on the north side, by an access road from Vinčanska Street to the bank of the Danube and the north boundary of cadastral parcels 1995/1 and 1995/4 of CM Vinča, then by the boundary of the protected surroundings of the archaeological site (2nd degree of protection) and the west border of c.p. 2028/47, 2028/48 and 2028/14 of CM Vinča, then by the northwest border of c.p. 2028/35, 2028/22,

2028/37, 2028/21, 2028/111, 2028/34, 2028/20, 2028/10, 2028/6, 2028/32, 2028/5 and 2028/30 of CM Vinča, by the northeast border of c.p. 2028/30 and 2028/31 and finally by the boundary of the SPSPA of Belo Brdo Archaeological Site in the south. West of the described space, the area covered by the competition includes c.p. 2027/1 (the old school plot) and 2027/4, as well as the roads connecting these segments: Nikole Pašića, Lebanska, Poveljska and Steve Simonovića streets.

The scope of the design proposal part of the competition includes the bank of the Bolečica within the boundaries of the regulation, from the confluence into the Danube upstream over the length of about 660.0 m, as well as the coastal zone of the Danube from the boundary of the primary scope of the competition northwards for about 600 m upstream.

The graphic presentation of the competition scope is provided in the competition documentation – I INFORMATION GRAPHIC APPENDICES, attachment BOUNDARY OF THE COMPETITION AREA WITH THE PRESENTATION OF THE SUBUNITS.



Fig. 4. Orthophoto image with the positions of the elements that are the subject of the competition

4 VINČA - BELO BRDO ARCHAEOLOGICAL SITE

Belo Brdo is an archaeological site of exceptional archaeological value. It is positioned southeast of Belgrade, on the right bank of the Danube, in the village of Vinča. It consists of the archaeological remains of one of the largest and certainly the most enduring Neolithic settlement in Serbia and it is one of the most important Neolithic sites belonging to Vinča Culture in Europe. It has been named Belo Brdo [white hill] after the light colour of the loess terrace on which it is located.

4.1 Vinča Culture

Vinča Culture is a term used in order to describe a phenomenon in material culture that appeared during the Neolithic (5300-4500 BCE) in the southeast part of the European continent – the area which in addition to the territory of the present-day Serbia also includes parts of the present-day states of Bulgaria, Romania, Hungary, Bosnia and Herzegovina, Croatia, North Macedonia and Montenegro. Vinča Culture is characterised by sedentarisation and durable settling in one single place, which had a decisive impact on the explosion of creativity, a high population growth, technological progress and essential transformations of social relations. By their size and the number of inhabitants, some of its settlements exceeded not only all of the concurrent Neolithic settlements, but also the first cities created much later in Mesopotamia, Aegean and Egypt.

The revolution introduced by the carriers of Vinča Culture primarily concerns the idea of coexistence and the formation of permanent communities such that did not exist until then. The very situation in which so many people lived in one settlement at the same time for the first time set off an incredible creative potential, affirmed through the superior art present in every settlement belonging to Vinča Culture, through architectural attainments that included the emergence of multi-storey buildings, as well as through leaps in technology – the man not only started to transform rock by mining and processing stone, but he also started to transform matter by controlling fire, first turning earth into ceramics and then rock into metal. It has been confirmed that the earliest extractive metallurgy of copper (a process in which the metal is transformed by melting) and cinnabarite was present in Vinča Culture.

The period that we call the “Neolithic revolution” and that can be followed in detail in Vinča encompasses several key changes accepted by human groups – sedentarism (living in the same place), agriculture, livestock husbandry and pottery production. In order to understand in the first place how revolutionary this change was, we need to keep in mind that the human race has been evolving during several hundred thousand of years and that life in larger communities living in the same area accounts for less than 5% of our evolutionary journey. One of the few places where this concept of coexistence started was precisely the Central Balkans.

Vinča Culture gave birth to one of the most fascinating phenomena in the European prehistory and these were precisely the settlements that could be called proto-cities. The Vinča Culture settlements most often covered around 30 hectares of surface area, but there were also settlements that covered up to 80 hectares. In most of the surveyed sites, the organisations of the settlement entailed a dense arrangement of houses – the distance between the houses was often less than one meter, which indicates extremely developed social relations. The geophysical surveying has revealed a number of mega-sites that have several hundred of organised, densely packed houses with fortifications around the settlements – a phenomenon we do not encounter until the setting up of the first city-states in the Middle East and the sites of Trypillia culture in Ukraine. The very houses of Vinča Culture represent a huge change in the understanding of the area, family, way of life and tradition.

Taking into consideration that life in densely populated areas inevitably gives rise to conflicts, the fact that Vinča Belo Brdo has a sequence of over 800 years of coexistence in one place, i.e., more than 25 generations of people living within an orderly social structure, unequivocally suggests that there was a way for these conflicts to be resolved. The distribution of Vinča sites, which in the Republic of Serbia almost as a rule lie at around 5 kilometres one from the other, indicates a very developed network of cooperation,

trade and competition. The social framework developed in this way continues to be one of the puzzles of the archaeological science, which also includes the fact that so far no evidence of social stratification and inequality in Vinča society has been found.

A large number of settlement sites in the area of Vinča Culture unequivocally raises questions concerning the origin of that population. The science weighs up several models that are being investigated in order to answer this complex question, but whichever hypothesis turns out to be correct, it is indisputable that there used to be incredibly complex connections over large distances and that European trade corridors were established. We can see the same trading routes, that date back from the onset of Starčevo Culture, in the period of Vinča Culture and we will see them millennia later – the Roman Imperial Road also passed by Vinča, as well as the Istanbul Road, which is just a continuation of the thousands of kilometres long Silk Road. The needs that go beyond the daily requirements for raw materials, caused by human creativity, created and opened links between the communities of the Mediterranean, Central and Northern Europe, the communities of the Eurasian steppe and the Middle East. Once formed, the Neolithic corridor did not interrupt its development and one of the most important crossroads was – VINČA.

Pottery production is an activity that may seem simple at first glance, however, it constitutes the first case where man transformed the matter. It is rare to find a higher level of skill in that art of transformation, as is the case at Vinča Belo Brdo site. This is due to the mechanisms of the knowledge transfer stemming from the coexistence of numerous generations, where the knowledge and the skills were passed from one generation to the next, and adapted to the needs of each new generation.

We can also see this attitude towards crafts on the examples of stone tools, where the forms were often chosen not only because of their functionality, but also because of their aesthetic value. Through countless examples, it is obvious that beauty was just as important to the community at Vinča Belo Brdo site as functionality, and that the aesthetics was woven into every aspect of life.

The metamorphosis of rock into metal is a process that enabled the transformation of man into an absolute master of the world. The operational chain of metal processing shows all the ingenuity of the human being, which entails a large number of unrelated and seemingly opposed actions that man must perform. Nothing illustrates the creative charge of Vinča Culture better than the fact that the earliest evidence of processing ore into metal could be found at several Vinča Culture sites.

The evidence of the incredible capacity and the scope of Vinča Culture lies in the fact that in the area of present-day Serbia there are over 600 known Vinča sites, which is the number of settlements on this territory reached again only in the modern times. Technological innovations, interpersonal relations, connections, cooperation networks, principles of conflict resolution, creation and giving, render Vinča period the character of the first modern period. Although known and researched for more than a century, Vinča Culture continues to be the most interesting subject of research in the European archaeology.

4.2 Cultural and historical context of the site

Vinča Belo Brdo is a multi-layered archaeological site that lies in one of the most beautiful areas along the lower course of the Danube. At the time when the settlement was first set up, the location itself constituted an optimal choice of a kind where a number of benefits offered by the Danube with its floodplain, Podavalska brda [hills beyond Avala mountain], the Bolečica valley leading to Avala mountain and its mineral treasures could be used. The proximity of several confluences of large rivers along the most important European river corridors (the Danube, Tisza, Morava-Vardar and Sava corridors), which before the construction of modern traffic systems enabled the transport of people and goods, positioned Vinča as a kind of a terminal. Thus, Vinča played the role of one of the important hubs of the European continent. The site was defined in 1908, when Miloje Vasić, based on the earlier comments by Jovan Žujović, began excavations at Belo Brdo site in Vinča and discovered a completely new and until then unknown archaeological culture. This culture was named after the locality itself – Vinča Culture, while Vinča Belo Brdo became an eponymous cultural site. In addition, it is not a common case in science that the

eponymous site turns out to be one of the most important sites, which Vinča Belo Brdo definitely is. During the excavations, it was established that there was presence of uninterrupted human life at Vinča site for over 8 millennia, from Starčevo cultural strata, through Vinča, Eneolithic, Bronze Age, Iron Age, antiquity, medieval and finally the modern life in Vinča. Therefore, Vinča Belo Brdo has the honour of being one of the longest inhabited cities in the world. During the explorations conducted so far, numerous artefacts have been found at the site, which testify to the superior craftsmanship of the creators, as well as about the ubiquitous aesthetic principles, where each artefact is at the same time permeated by artistic, religious and functional aspects.

In the archaeological science of Central and Southeast Europe, Belo Brdo in Vinča is taken as a chronologically reliable indicator for studying the onset and the development of a large number of Neolithic and Eneolithic cultures in the Balkans. The influences of significant events and changes in the material and spiritual cultures have been observed in certain levels of the cultural layer up to 10 m thick, which is how much precipitated here by the long stay of people in this place from 5300-4900 BCE.

Belo Brdo in Vinča is characteristic for its continuity, multi-layered aspect and prehistoric way of life in all its manifestations: housing, functional, decorative, ritual and artistic objects, the economic development flows, the script, and influences on the inhabitants of other settlements in the Balkans and beyond. Another extremely important feature is the possibility to conduct scientific study, interpretation and presentation of the discovered remains of the prehistoric houses and objects discovered in them. The layer that used to reach the height of 10 m high in which the continuity of this rich, centuries-old Neolithic settlement can be read constitutes an extraordinary map of the duration of a prehistoric culture.

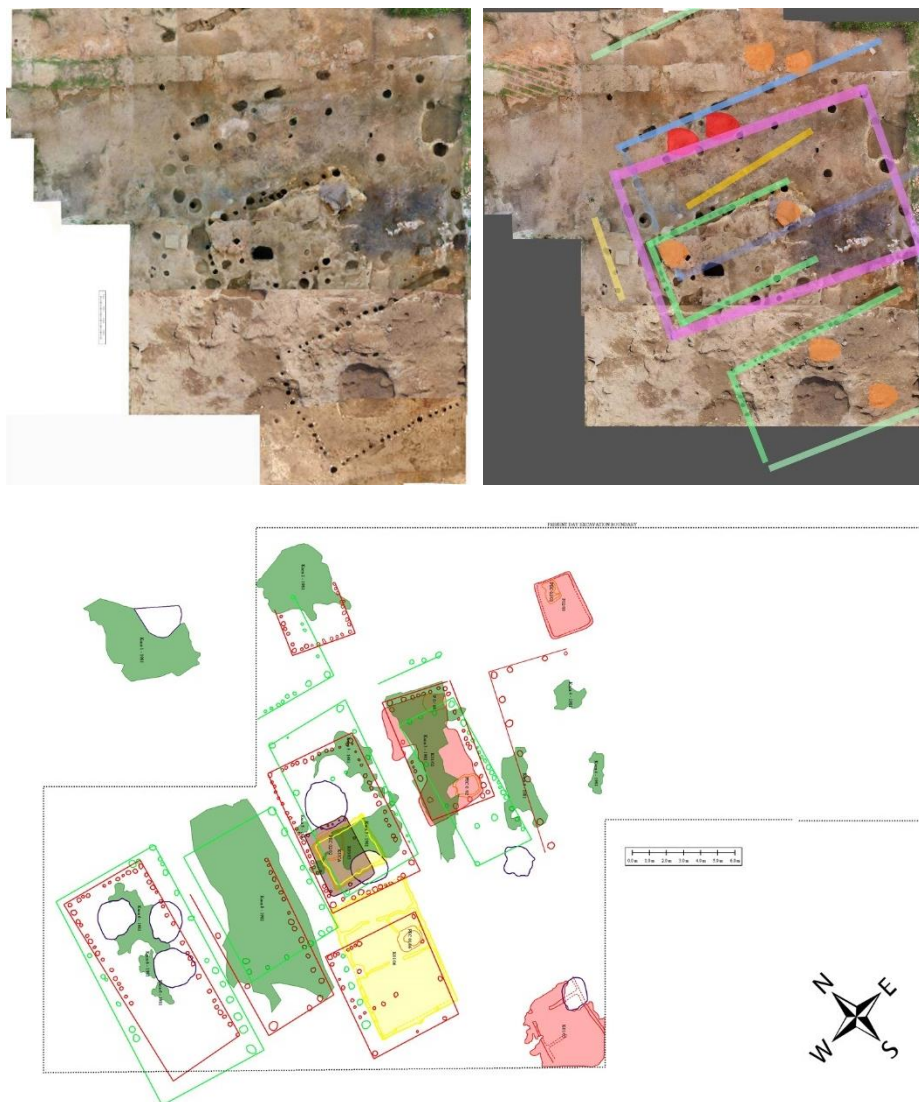
The foundation, growth and the highest rise of Vinča Culture are illustrated by the archaeological finds discovered at the depths between the ninth and the sixth metre dated back to the period between 5300 and 4900 BCE. During the construction of the prehistoric settlement, the Neolithic inhabitants of Vinča paid particular attention to the layout of the houses, the remains of the rectangular bases of which have been preserved suggesting that the houses had vertical walls and a possible gabled roof. The continuity of the culture is even more clearly confirmed by movable archaeological finds, primarily the ceramic objects – dishes and anthropomorphic figurines. Thousands of objects have been discovered in the surveyed area and they are now in many museum collections, while the work on their study continues to the present times. On the basis of these numerous and very diverse objects, as well as the remains of architecture and the used raw materials, the material and spiritual cultures of many generations who lived in this area can be reliably reconstructed.

Belo Brdo archaeological site in Vinča is one of the first sites in Serbia where systematic surveying started at the beginning of the 20th century. Miloje M. Vasić was the first educated Serbian archaeologist to excavate from 1908 to 1934, in an area of approximately 1500 m². Thanks to Vasić's contacts with Academician Fyodor I. Uspensky from the Russian Archaeological Institute in Constantinople, Sir John Linton Myers, archaeologist and Sir Charles Hyde, a British publicist, extensive explorations were conducted and on the basis of their results the culture of the final Neolithic and early Copper Age was named – Vinča Culture.

Under the leadership of Prof Nenad Tasić, PhD, systematic scientific archaeological explorations have been carried out at the site from 1998 to date, using new methodologies and modern detection methods. The results of the papers are published in the leading scientific journals in Serbia and abroad, which constitutes a significant impact not only on the Serbian, but also on the European and the world science.

In this regard, the results concerning the ground plans of several Neolithic houses are significant. In this way, the remains of several rectangular buildings were discovered in a smaller excavated area, while detailed digital imaging enabled the reconstruction of the construction method in the final phase of the Neolithic. The houses were made of wattle closed with earth, while the roof was most likely gabled and covered with straw. There was a calotte-shaped stove in the houses used for cooking, with stoves also found as individual structures outside residential buildings. The houses were arranged in a row and on the basis of this insight, it has been concluded that the settlement was made of houses between which there

were narrow passages – streets. This conclusion has led the researchers to call the final phase of the Neolithic “Vinča metropolis,” i.e., “prehistoric metropolis,” and that term is also used in other types of the site presentation.



*Fig. 5. Three presentations of the stages in the digital shaping up of the ground plan of Vinča settlement in the surveyed area
Source: Vinča – prehistoric metropolis: 1908-2008 explorations, Belgrade 2008*

Vinča Culture is internationally known primarily for its artistically designed vessels and figurines made of baked earth. Miloje M. Vasić discovered more than a thousand specimens of figural sculpture and today that number has almost doubled. The collection of these objects testifies to the affluent religious, symbolic and artistic development of the inhabitants of the Neolithic settlement, and the influences that came to the creators of these objects from the Middle East, the south of the Balkan Peninsula or northern Europe.

The archaeological literature often deals with considerations concerning the fertility cult and woman as the central figure in the Neolithic era. Mother goddess, the Great Mother, primordial mother, magna mater – these are just some of the many romantic interpretations of the figurines depicting a woman. The figurines with male attributes are less present, but most of Vinča figurines do not exhibit any gender characteristics at all, while in several cases the characteristics of both sexes are indicated. They have been found inside and outside the houses, in storage spaces, as well as in waste pits, trenches for the foundation of the houses, levelling layers and in other places. On the other hand, some of the more recent studies explain figurines as props for education and leisure (storytelling).

From the onset of Vinča art, the way of presenting faces on the figurines followed the strict rules. At first they were triangular and then pentagonal, without much detail. The figurines with depicted mouth are

extremely rare. Until the middle of the development of Vinča's figural sculpture, pentagonal faces imitating masks were dominant, only to be replaced by figurines with much less realistically represented heads, whose shape was subordinated to the pentagonal mask on which long noses were modelled and large, most often almond-shaped eyes were carved. The classical phase, the period when the recognisable specimens of sculpture were created in all areas in which Vinča Culture thrived, is represented at Vinča site at the depth between 7.5 and 5.5 m, i.e., 5100-4900 BCE. The end of the glorious epoch of Vinča's anthropomorphic sculpture can be discerned from the depth of 3.5 m. The typical Vinča sculpture is recognised by its cruciform representation of the figure and by some incised details. An almost realistic way of representing human figure is replaced by stylised depictions with summarily shaped heads. The figurines from the end of Vinča Culture are quite superficially modelled and without any details. The eyes were sometimes marked on the faces, while the details, if any, were incised. Due to the summarily and impersonal modelling of the head, the individual characteristics or any group affiliation were probably emphasized by different ornaments on the clothes.

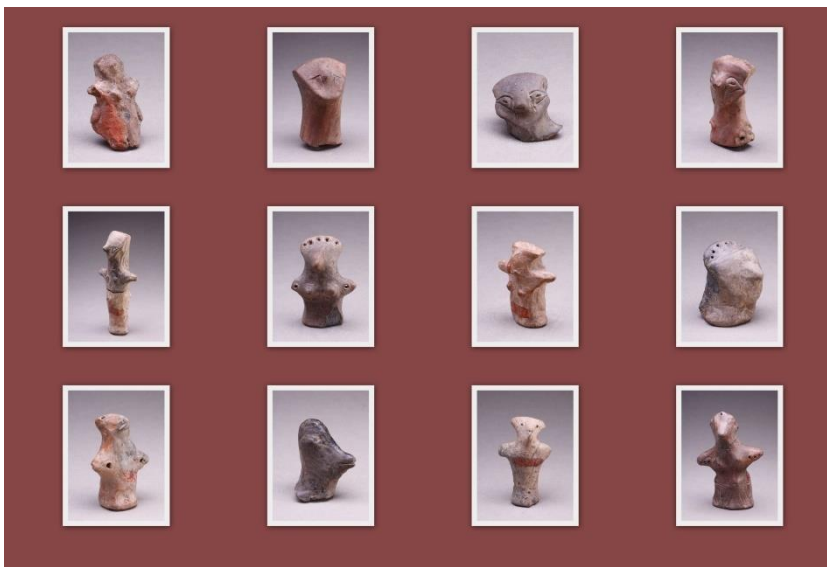


Fig. 6. Anthropomorphic figurines

Source: *Vinča – prehistoric metropolis: 1908-2008 explorations, Belgrade 2008*

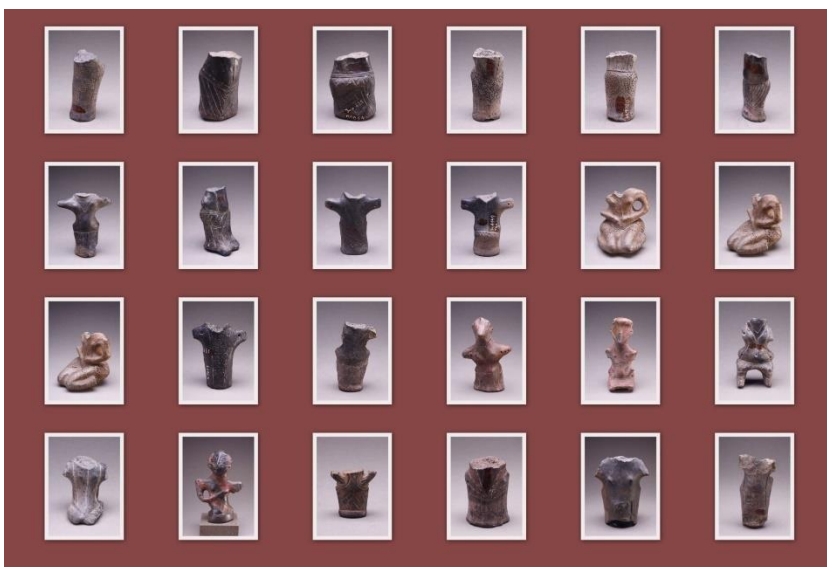


Fig. 7. Anthropomorphic figurines

Source: *Vinča – prehistoric metropolis: 1908-2008 explorations, Belgrade 2008*

Prosopomorphic lids appear in the Neolithic only in Vinča culture. These are ceramic lids of cylindrical or conical shape, with a representation of a human and/or animal face (Greek πρόσωπον = face). The eyes,

nose and ears are represented on each lid, while the mouth is never shown. The most pronounced are large, embossed eyes, usually bordered with incised lines. A peculiarity of the lids is also reflected in the short ears, placed vertically above the temples. Unlike other elements, which can equally belong to an animal or a human face, the ears made in this way are certainly related to the representation of an animal. The lids were always richly decorated with incised geometrical ornaments. Each prosopomorphic lid is unique and no two identical specimens have been found to date.



Fig. 8. Prosopomorphic lids

Source: Vinča – prehistoric metropolis: 1908-2008 explorations, Belgrade 2008

The objects called altars by archaeologists are ceramic objects, most often with 3 or 4 feet, with the shape of a triangular or a quadrangular recipient, quite rarely circular in shape, while their main characteristic are the angular ends – protomes in the shape of human or animal heads. Most of the altars were decorated using incised ornaments with motifs of meanders, fish bones, hatched triangles and, quite rarely, arched ribbons. Traces of white and red colour, applied after firing, have been preserved on many specimens.

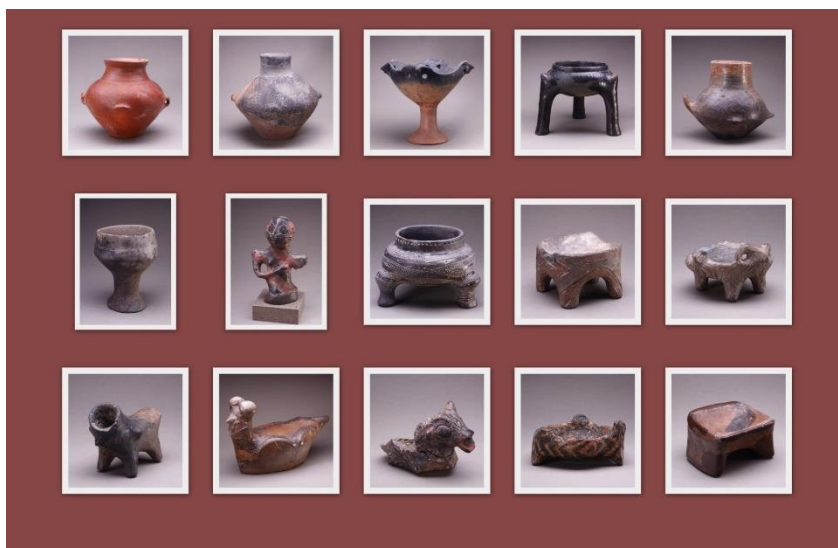


Fig. 9. Altars

Source: Vinča – prehistoric metropolis: 1908-2008 explorations, Belgrade 2008

Vessels in the shape of a human figure or with human depiction, as well as vessels in the shape of animals are among the very rare finds. They are unique by the way of their shaping and decorating, while some of them are masterpieces of Vinča art. One of the most famous finds from Vinča is certainly an ornithomorphic vessel called the Hyde Vase. It has most often been described as a vessel in the shape of a bird with folded wings, but it is possible that this is a fantastic creature with a human face.



Fig. 10. Vessel in the shape of a human figure

Source: Vinča – prehistoric metropolis: 1908-2008 explorations, Belgrade 2008

The prehistoric inhabitants of Belo Brdo were engaged in agriculture and animal husbandry, and they supplemented their diet by hunting, fishing and foraging wild fruits. The remains of the fauna contain the bones of mammals, birds, fish and gastropod, mollusc and tortoise shells. Among the mammals, the most numerous are domestic animals: cattle, pigs, sheep, goats and dogs. As for the wild animals, remains of deer, roe deer, wild boar and wild cattle were found, as well as those of small mammals: rabbits, beavers, martens, badgers and foxes. Hunting played an important role in the survival and in the obtaining of materials for making tools from deer antlers or wild boar tusks. Remains of birds are rare. Given the proximity of the Danube, fishing was of particular importance. Among the tools for everyday use, a large number was used as fishing equipment. The size of the fishing hooks, harpoons, weights for fishing nets and bone needles for repairing nets shows that some very large fish were also extracted from the Danube.

The archaeobotanical analysis has revealed numerous remains of charred grains of cereals, legumes, flax, wild fruits and various weeds. Cereals were mostly cultivated and among single-grain and two-grain wheat was predominant, while bread wheat, barley and millet were far less represented. The cultivated species also include legumes (lentils and peas), as well as flax. Tools made of stone and horn, less often of bone, were used for the cultivation of land. The hoes were made of horn, sometimes also of stone, and they mostly have a perforation for locking the handle. The ground was dug using picks made of naturally bent deer antlers with a pointed tip. Planting tools were also made from polished and pointed antlers. Reaping tools, like sickles, consisted of composite tools, in which cut stone blades were implanted in a horn or wood handle.

Cereals were kept in large containers – amphorae and pithoi, which are frequent finds in architectural structures. Grindstones were used for grinding grain and using a special tool – a spreader, the grains were crushed on them. Particularly interesting is a grindstone “built” into a daub structure, found at a house, next to the wall. A large number of tools made of different materials (bones, horns and stones) and exceptionally made vessels suggest a very high level of craftsmanship. During the late Neolithic, there were undoubtedly specialised craftsmen who were engaged in making only certain types of objects for everyday use, for the needs of the cult, as well as for barter.



Fig. 11. Remains of charred cereal grains

Source: Vinča – prehistoric metropolis: 1908-2008 explorations, Belgrade 2008

Interdisciplinary analyses have established that daub from the vicinity of the settlement, from the place where a brickyard is still located, was used as the basic raw material for making vessels. Various types of admixtures were added to this, such as pebbles, sand, crushed pottery and river shells, in order to improve many properties of the vessels, primarily their resistance to thermal changes. The polishing of the finished vessels and the application of ornaments was done using river pebbles, while after the firing they were probably coated with some kind of grease in order to close the pores in the walls of the vessels so that these could store the liquid better. The shapes of the ceramic vessels are bowls and goblets – conical, biconical, hemispherical and spherical, then storage vessels – amphorae and pithoi, food preparation vessels – pots and casseroles. A special group consists of miniature vessels that imitate the shapes of the ceramic for everyday use. The vessels were decorated. In the older stages this was done with incised ribbons filled with dents. The most common decoration in the younger stages is an ornament made by polishing vessels with pebbles, before the firing. The motifs are diverse, from quite simple parallel lines to metope fields filled with different ornaments: lattice, weave, zigzag lines or hanging triangles. The grooves are usually found on the upper parts of the bowls and amphorae; they could be quite simple, but sometimes they also created complex motifs, such as spirals. Quite rarely, the vessels contain reliefs of anthropomorphic, as well as zoomorphic depictions, most often in the shape of a bull's head – bucranium. There are also frequent decorations made by thick red dye.

Chemical analyses of the red pigment have indicated presence of iron minerals, as well as cinnabar.



Fig. 12. Red pigment vessels

Source: *Vinča – prehistoric metropolis: 1908-2008 explorations, Belgrade 2008*

4.3 Summarised overview of the explorations

The archaeological excavations carried out in the Vinča area from 1908 to the present times represent a key cultural component in the evaluation of Belo Brdo archaeological site.

The timeframe of the exploration of Belo Brdo archaeological site in Vinča could be divided into four basic periods. First of all, these are the results of the exploration conducted by Miloje Vasić in the period from 1908 to 1938, then the results of the excavations, as well as the theoretical studying conducted from the end of the 1970s and headed by Nikola Tasić and Dragoslav Srejskić, and the results of the latest stage in the works headed by Nenad Tasić that began in 1998 and that are characterised by a modern, interdisciplinary approach, and the excavations that began in 2011 and that got intensified from 2019. In each of these phases, a large amount of tangible and intangible data was collected, which today testifies to the importance and monumentality of the archaeological site.

At the end of the 19th century, Vinča near Belgrade was mentioned as a prehistoric settlement. Jovan Žujović, the first educated Serbian geologist, who found flint knives and knapping residues in Vinča, drew the attention of experts and scholars to that site at a meeting of the Serbian Geological Society held in 1893. However, the site in Vinča is inextricably linked with the name of its first researcher, Professor Miloje Vasić, an archaeologist and the curator of the National Museum in Belgrade. From 1906, he kept pointing out the fact that the site in Vinča was endangered taking into consideration that a part of the site was below houses built in the late 18th or the early 19th century and because during the high waters the Danube undercut this site, breaking away large pieces of land that contained the remains of the ancient culture.

The year 1908 is important for the European and the world archaeology, since it was then that Miloje Vasić, having received the first funds from the state of Serbia, began excavations in Vinča. The documentation from these explorations has not been preserved, while the report published in 1910 suggests that Vasić examined a 7 m thick cultural layer on a leased plot of land, measuring 40 x 5 m. He then got in touch with Fyodor Uspensky, an academician of the Russian Academy of Sciences, the founder and director of the Russian Archaeological Institute in Constantinople, from whom he received funds to continue with his explorations and the lease of land. He worked with some interruptions in the area of 1200 m² that extended from the 1908 dig from 1911 to 1931.



Fig. 13. Archaeological explorations 1911

Source: *Vinča – prehistoric metropolis: 1908-2008 explorations, Belgrade 2008*



Fig. 14. Archaeological explorations 1913

In the meantime, he met Alec and Catherine Brown, who lived and worked in Belgrade for a while, which was a turning point in the explorations of Vinča. In the summer of 1929, the London Times published an ad by Sir Charles Hyde, a wealthy owner of a newspaper from Birmingham, offering funds for the excavation of antiquities. Wanting to help Vasić, Catherine Brown started a correspondence with Hyde without Vasić's knowledge. The result was an agreement between Hyde, Vasić and the Government of Serbia, on the basis of which Hyde's funds were used in order to found the Archaeological Collection of the Seminar for Archaeology, finance the excavations in Vinča that same summer and lease a piece of land for the future excavations.

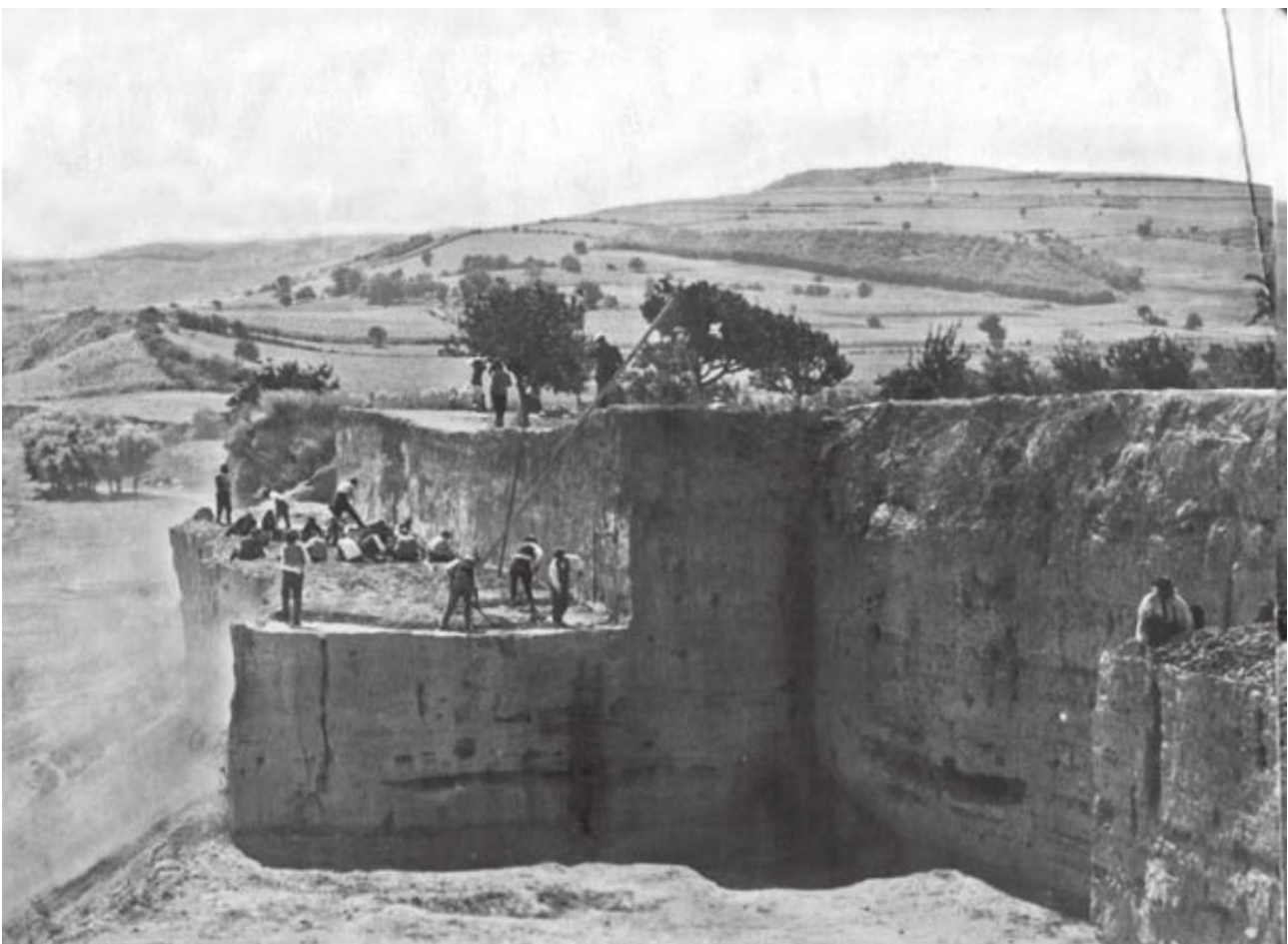


Fig. 15. Excavations carried out in 1933.

Source: *Vinča – prehistoric metropolis: 1908-2008 explorations, Belgrade 2008, p. 72*

In return, it was agreed that a certain number of finds from Vinča would be given to Hyde, i.e., to museums in Britain. Thanks to the contacts established by Catherine Brown, the name of Charles Hyde is permanently associated with Vinča. His donations enabled the 1929–1931 excavations, on the land leased in 1911. After that, a new piece of land was leased in which the excavations were carried out in 1933–1934. Miloje Vasić published the results of his explorations in four volumes of *Prehistoric Vinča*, the first one of which was published in 1932. By 1936, the other three volumes of this major work were also published.

The goal of the renewed excavations in Vinča in 1978, headed by Nikola Tasić, was to survey the cultural layer in a wide dig, which provided more complete data on the stratigraphy of the site and especially the existence and character of post-Neolithic horizons. From 1982, the head of the explorations became academician Milutin Garašanin, an archaeologist, and a little later, academician Dragoslav Srejskić, also an archaeologist.

The explorations were conducted on a new piece of land, Sector II, extending from the central part of the site that had been excavated until 1934. By 1983, an area of 1,170 m² was opened in Sector II. Systematic surveying from 1978 to 1983 covered a large part of a medieval necropolis where burials were performed from the 8th to the 15th century and where 713 graves were discovered. The 1978–1986 explorations included the strata that were created after the end of the Neolithic era, with remains of a settlement belonging to the Eneolithic Baden Culture. A large number of pits belonging to the Eneolithic and the Copper Age periods were discovered, as well as several hearths, while the remains of the floor daub show that there may have been above-ground structures. A re-examining excavation of a part of the profile that constituted the south border of Vasić's explorations was also carried out. The 1978–1981 excavations provided precise data on the layers in that part of the site. This profile was made exactly on the spot with the greatest thickness of the cultural layer.



Fig. 16. Medieval necropolis horizon



Fig. 17. Sector II after the flattening of the terrain

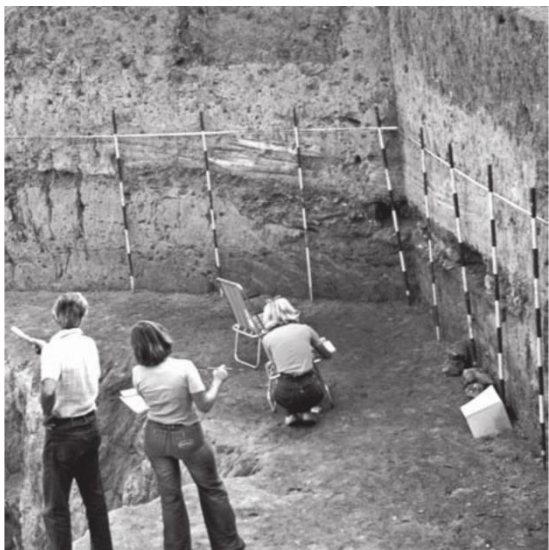


Fig. 18. Archaeological explorations 1978

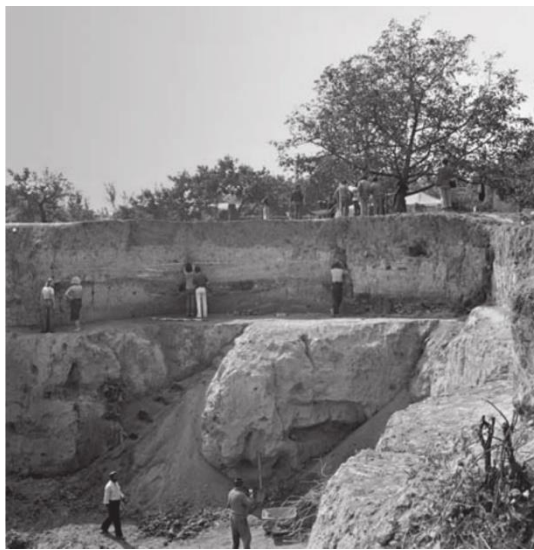


Fig. 19. Archaeological explorations 1978

Source: *Vinča – prehistoric metropolis: 1908–2008 explorations*, Belgrade 2008, p.95(Fig.16), p.97(Fig.17), p.92(Fig.18), p.93(Fig.19)

A new stage in the research of Belo Brdo archaeological site brought a change in the excavation methodology and the application of the unit system (system of stratigraphic units). Since 1998, the head of these explorations has been Nenad Tasić, an archaeologist, professor at the University of Belgrade. The procedure is similar to classical excavation, except that changes in the quality and colour of the soil are monitored and that the boundaries of the units are discovered and recorded in all three dimensions. Once the boundaries have been found, they are documented by measuring the unit boundaries using a Total Station, a unit sheet is set up in which the basic data is recorded, a sketch is made and the observations and impressions of the surveyor (the unit master) are entered. Thousands of objects and samples have been processed through the laboratories for ceramics, polished and knapped stone, as well as the archaeozoological and macrobotanical laboratories. In the surveying work in the field, it is important that specialists noticed in the material from their respective fields characteristics that could have a connection with the conditions and the place of the finding, and that suggested the function of an area. With such feedback, particular attention has been paid to the excavating of the immediate surroundings of the given find. This relates especially to the ceramics. Reconstruction of the vessels has been done in parallel to the excavation and since the fragments from seemingly different units have been joined, the information from the ceramics laboratory may be crucial for determining the concurrence of two or more surveyed units. More than 10,000 fragments of Vinča vessels have been entered into the pottery database, which constitutes a relevant sample for any further statistical analyses. There are also suitable bases for polished stone, knapped stone production, archaeozoology and macrobotanical remains. The result of the explorations conducted until 2009 is that the discovered remains of residential buildings with auxiliary buildings and some kind of a street from the last phase of the Neolithic have been preserved *in situ*. This part of the archaeological site (cadastral parcel 2023/1 of CM Vinča), on the upper surface, is currently closed for excavations, protected by appropriate layers of sand, gravel and reinforced geotextile.



Fig. 20. Results of the excavations in the period 1998–2009. Source: Exploration project Belo Brdo in Vinča



Fig. 21. Results of the excavations in the period 1998–2009 Source: Exploration project Belo Brdo in Vinča



Fig. 22. Archaeological explorations until 2009



Fig. 23. Archaeological explorations until 2009
Source: Exploration project Belo Brdo in Vinča

Since 2011, the archaeological excavations have been carried out north of the previously researched plot of land, in an area of around 250 m², on cadastral parcel 2023/2 of CM Vinča, which has been established as a risk area on account of a landslide.

On several occasions (2004-2005 and 2011-2014), there were archaeological excavations in a part of the vertical section which was physically separated from the rest of the site on account of the active landslide and erosion, and prone to fall. It was decided to survey and remove that part of the site, thus saving data from an area of approximately 5x3 m and the depth of 9 meters that covered the entire development of Vinča Culture on this spot. These data and the samples collected on that occasion have been used for the needs of precise dating applying the C14 radiocarbon method. Thanks to the cooperation with institutions Historic England and the University of Cardiff, Vinča's cultural layer has been dated with 222 new dates with the precision up to 30 years. These new findings and the precise dates have put Vinča again at the centre of the study of the late Neolithic in Southeast Europe.

More extensive works were carried out in the period 2019-2021 and during this time the discovery of the previously explored medieval necropolis, where traces of burials from the 8th to the 15th century were expected, continued. However, these explorations have shown that the necropolis, which is roughly dated back to the period from the 12th to the 14th century, spreads throughout the entire explored sector of the

landslide. For the first time, traces of habitation from the period from the 9th to the 11th century were found at Vinča site, which means that various activities were carried out at the site before the necropolis was formed in the 12th century. The specificity of this excavation phase are layers that have been disturbed by noticeable cracks caused by the sliding of the terrain. During this period, skeletal remains of 220 deceased were discovered, a total of around 1,000 individuals including the earlier excavations, and this is not the final number. So far, over 300 primary graves have been discovered in this area, along with a myriad of secondary ones, a total of around 1,000 individuals, including earlier excavations, and that is not the final number. This makes the site of Belo Brdo the largest medieval necropolis that has been surveyed on the territory of the Republic of Serbia, and shoulder to shoulder with Trnjane, Matičane and Novo Brdo with which it only partially overlaps chronologically, and one of the most important. Unfortunately, human skeletal remains from the excavations conducted in the 1970s have not been preserved, but the collection of over 300 skeletons discovered during the new stages of the explorations of the site makes it one of the best-preserved anthropological collections at the moment. This constitutes an incredible anthropological potential for numerous bioarchaeological studies of medieval populations. The medieval cemetery occupied an extremely large area, it is located also underneath the surrounding houses and in the unoccupied area it extends to the north across the piece of land that is yet to be explored. Under the disturbed remains of the grave burials it is possible to notice remains from prehistoric epochs, the Eneolithic and the Neolithic, and these periods will be explored after the completion of the excavation of the medieval cemetery.



Fig. 24. Results of the 2021 explorations



Fig. 25. Results of the 2021 explorations

Source: Archives of the Institute for the Protection of Cultural Monuments of Serbia (IPCMS)

4.4 Summary of the archaeological explorations

The archaeological excavations and explorations have been carried out and they have continued to be carried out on a limited area in relation to the total area in which archaeological remains and layers have been recorded. In the first phase, in the period from 1908–1934 when the excavations were carried out by Miloje Vasić, an area of up to 1500 m² was completely archeologically surveyed down to the subsoil. This area does not exist on the site and it can be reconstructed on the basis of archival documentation.

From 1978 to 2009, the explorations were carried out on parcel 2025/2 of CM Vinča, west of the previous excavations in an area of 500 m². The excavations were stopped at the level of the discovered remains of a settlement established in the youngest phase of the Neolithic and the archaeological remains were physically protected against atmospheric and other influences.

Since 2011, and especially since 2019, the focus of the excavations has been moved to the northwest and the adjacent parcel 2023/2 of CM Vinča where the effect of a landslide has been ascertained. The excavations are carried out in an area of 500 m² down to the depth of 1.5 m and this mostly concerns the excavations of the remains of the medieval necropolis. It is intended to continue explorations in this area.



Fig. 26. Excavation surface areas, Source: Archives of the IPCMS

4.5 Legal protection of the archaeological site

Belo Brdo archaeological site in Vinča is an immovable cultural property of national and international importance, and it enjoys the status of a cultural property of great importance for the Republic of Serbia (Decision of the Institute for the Protection of Cultural Monuments of Belgrade no. 653/5 of 10 November 1965, Decision on Establishing Immovable Cultural Properties of Exceptional and Great Importance (“The Official Gazette of the SRS,” no. 14/79 and 30/89), i.e., Decision on Designating Belo Brdo site in Vinča as an Archaeological Site (“The Official Gazette of the RS,” no. 71/09).

The protection of Belo Brdo archaeological site in Vinča has been ensured by two decisions, one decision on designation and one decision on categorisation of the cultural property.

The capacity and scope of the protection of the archaeological site in Vinča has changed and improved over time – Decision no. 341/50 of 30 March 1950 of the Institute for the Protection and Scientific Study of Cultural Monuments of the People’s Republic of Serbia put “Belo Brdo” Archaeological Site in Vinča, with the total area of 5 hectares, under the protection of the State. This was an enlarged area where Miloje Vasić first conducted excavations in the period from 1908-1934. It was soon established that the scope of the site was small, a new procedure for the protection of the archaeological site was conducted and with new Decision no. 653/5 of 10.11.1965, the Institute for the Protection of Cultural Monuments of the City of Belgrade declared “Belo Brdo” archaeological site in Vinča a cultural monument, while the protection included cadastral parcels: 2023/3, 2025, 2023/1, 2022, 2021, 2024, 2026/4, 2026/5, 2026/6, 2027/2, 2028/28 and 2028/16. This decision replaced the said Decision from 1950.

In 1979, “Belo Brdo” archaeological site in Vinča was declared an archaeological site of exceptional importance for the Republic of Serbia (“The Official Gazette of the SRS,” no. 14/79). In the Republic of Serbia, this type of categorisation designates a certain cultural property as immovable heritage that stands out with its cultural and scientific values in relation to other immovable cultural properties.

New findings about the layers with archaeological remains obtained by topographic surveying conducted using modern methods, by geomagnetic research, geoelectric surveying and various methods from the air were the reason for expanding the protected area. In 2009, the Government of the Republic of Serbia passed the Decision on the Establishment of Belo Brdo Site in Vinča as an Archaeological Site which expanded the protection zone and the protected surroundings ("The Official Gazette of RS," no. 71/2009 of 31.8.2009). With this decision, the archaeological site was established in an area of 11.77 hectares that stretches along the right bank of the Danube and extends westwards into the interior of the inhabited part.

ЛЕГЕНДА

- АРХЕОЛОШКО НАЛАЗИШТЕ
- ЗАШТИЋЕНА ОКОЛИНА



Fig. 27. Boundaries of area covered by Belo Brdo archaeological site and its protected surroundings under the 2009 Decision

An initiative to develop the archaeological site, to establish the general interest and to start the setting up an archaeological park was launched in 1980. Namely, with Decision no. 463 of 15.12.1980, the Assembly of the Municipality of Grocka established the general interest linked to the construction of an Archaeological Park on cadastral parcels: 2023/2, 2023/3, 2026/4, 2026/5, 2026/6, 2027/2, 2027/4, 2047/2, 2048/1, 2048/2 and on a part of cadastral parcel 2025.

An overview of the state of construction on the parcels within the boundaries of the archaeological site shows that out of the twelve parcels that were the subject of expropriation and registration, only two are being used as archaeological site, i.e., as an area for exploration and presentation, one is used for the access, while on the others there is either no activity (three of them) or they are agriculturally cultivated (three of them), plus on one of them an auxiliary facility has been built.

In the last twenty years, intensive construction has been carried out on the private parcels within the boundaries of the archaeological site, whether the existing structures are being expanded or new ones are being built.

Until 2008, the cadastral parcels within the boundaries of the protected surroundings of the archaeological site were not the subject of any more detailed scrutiny. North of the archaeological site, the parcels mostly have a forest belt on the edge of the landslide, while on the bank of the Danube there is a series of so-

called stilt houses, privately owned structures erected without permission. To the northwest and west there are private houses with curtilage and a small number of parcels that are cultivated. South of the archaeological site, the current situation is recorded in the cadastral plan, with a note that even earlier this area had a dense concentration of buildings, seven parcels are cultivated, four parcels are uncultivated, while several parcels along the river bank are not developed. The situation at c.p. 2045/1, where a larger commercial facility was built before the designation of the protected surroundings, is quite typical.

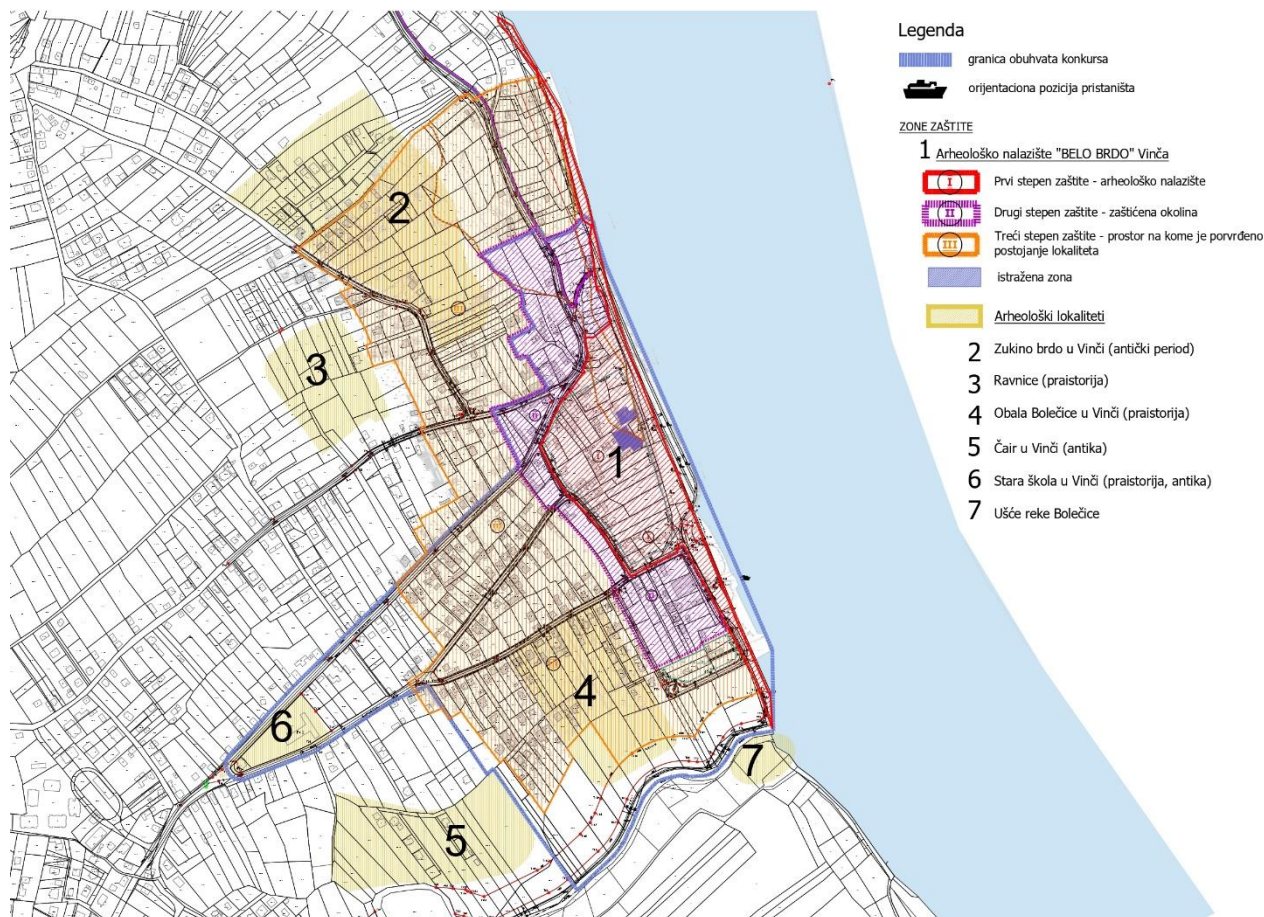


Fig. 28. Protection zone of the archaeological site with an overview of the potential positions of archaeological sites in the direct vicinity

The Museum of the City of Belgrade, which manages a part of the archaeological site (the state-owned cadastral parcels), is the carrier of the archaeological excavations and surveying, it is in charge of storing the movable finds and it promotes the results through expert guided tours and exhibitions. The scientific and professional management of the archaeological site is organised also through commissions and committees of the central institutions of culture and science in the Republic of Serbia – the Ministry of Culture and Information and the Serbian Academy of Sciences and Arts.

Belo Brdo archaeological site in Vinča is protected not only by the legal regulations, but also by the planning ones.

5 GENERAL CHARACTERISTICS OF THE AREA – BROADER AND DIRECT SURROUNDINGS

The area covered by this competition is located in the settlement of Vinča, within the suburban municipality of Grocka on the territory of the city of Belgrade. Vinča is positioned on the right bank of the Danube at the confluence of the Bolečica and it is 14 km southeast of the urban part of Belgrade.

The character of the area that is the subject of the competition is established to a large degree by being a part of the Danube coastal zone. With its geographic and strategic position, the Danube connects Eastern and Western Europe. It is the only pan-European water corridor (out of ten pan-European corridors, nine are railway and road ones), the most important waterway (together with the Rhine and the Main)

connecting Black Sea with North Sea and the backbone of the inner waterway network. The Danube is navigable along its entire course (588 km) through the territory of the Republic of Serbia, which belongs to the area of the middle Danube region, and has the significance of an international waterway. In the zone covered by the competition, the waterway belongs to category VII – section under deceleration downstream from Belgrade to the border with the Republic of Bulgaria. According to the *Decree on the Ecological Network* (“The Official Gazette of the RS,” no. 102/2010), the Danube belongs to the Ecological Network of Serbia as an ecological corridor of international importance.

5.1 History and the development of the area, architectural and cultural heritage

This hilly area represents an extraordinary geographic setting where people have been living continuously for almost 7000 years in prehistory, antiquity, the Middle Ages and very intensively since the beginning of the 19th century when the villages of Vinča, Ritopek, Grocka and Brestovik were first formed and have continued to develop in their present-day shape. On the bank of the Danube, there used to be a medieval necropolis where burials took place from the 8th to the 15th century, but no remains of a settlement from this period have been reliably detected, although the latest explorations have also shown traces of habitation in the period from the 9th to the 11th century and there are sites from the period that coincides with most of the burials (12th – 14th century). It is obvious that in the new wave of settling in the 19th century, the modern settlement annulled the position of the earlier medieval settlement.

Detailed prospecting of the terrain has been carried out on the territory of the settlement of Vinča and the neighbouring settlements, Veliko Selo in the north and Ritopek and Grocka in the south. It has been established that there are around 40 archaeological sites directed towards the Danube or in the immediate vicinity of the bank. 18 sites from the period of prehistory, antiquity and the Middle Ages have been recorded on the territory of Vinča settlement. None of these sites has been archaeologically explored. Some of the sites, such as Zukino brdo, Ravnice, Obala Bolečice, Čair and Škola, are located within the zone covered by the competition locality.

The most important cultural asset in Vinča is Belo Brdo Archaeological Site (*described in detail in Part 4 of the Programme*), located in the extreme northeast part of the settlement, on the very bank of the Danube, completely surrounded by pieces of land belonging to households with small residential and agricultural buildings. In this place, on the right bank of the Danube, a cultural layer around 10 m thick has been formed hiding remains of material culture from the early Neolithic (5800 BCE) to the contemporary epoch. It is an extremely important site for the exploration and study of the Neolithic period in the Balkans.

Directly next to Vinča and the archaeological site, there are three international cultural trails: the Prehistoric, the Roman and the Ottoman ones.

5.2 Broader and direct surroundings – current situation

The settlement of Vinča, which belongs to the larger suburban settlements of Belgrade, is positioned on the right bank of the Danube, bordered on the west by the regional road Belgrade-Smederevo, on the east by the Danube and on the south by the river Bolečica.

The configuration of the separated terrains of the hydrographic unit of the Bolečka River and the exit to the Danube have conditioned such position of the settlement that belongs to the group of peripheral settlements with agricultural and fruit coastal zone and that has communication orientation towards Smederevo Road and the Ring Road, with a tendency of spontaneous, expansive growth and interconnections along these roads.

The structure of Vinča settlement, concentrated in the east-west direction, along Profesora Vasića Street, that connects Smederevo Road and the bank of the Danube, and around it, consists of fragmented plots of land that are marked by family houses with curtilage. As a rule, the arable pieces of land are outside the zone of the settlement, with rare exceptions when the piece of land cultivated agriculturally is next to the curtilage within the settlement. The central elements of the settlement are grouped into two segments –

around the intersection of Smederevo Road and Profesora Vasića Street – within this zone there is also the primary school Nikola Tesla with the capacity of 2000 students making it the largest in Belgrade – and in the middle zone of Profesora Vasića Street around the Church of Holy Apostles Peter and Paul built in 1857.

According to the last census (2011), Vinča has around 6,800 inhabitants, oriented towards agriculture, primarily fruit growing, and, thanks to the proximity of Belgrade’s urban zone, towards various other activities. On account of this, a significant number of inhabitants commute to Belgrade and back on a daily basis.



Fig. 29. MAKROCONTEXT: position of the competition area in relation to the other elements within Vinča settlement

In a broader context, Vinča is made recognisable by three important elements: the Vinča Culture archaeological site the most important locality of which is Belo Brdo, the Institute of Nuclear Sciences Vinča and one of the largest landfills in the Balkans – Vinča Landfill.

Belo Brdo archaeological site which covers an area of 11.77 hectares is located along the very bank of the Danube, some 350 m upstream from the confluence with the Bolečica River. During the 1980s, the bank of the Danube was fortified with a revetment along the length of the archaeological site.

The complex of the Institute of Nuclear Sciences Vinča, founded in 1948, is positioned near the central axis of the settlement, north of it, as an isolated whole, almost equally distant from Smederevo Road and from the Danube.

The landfill “Vinča” is located around 3.0 km from the central zone of the settlement, on the northern border of the territory of Vinča. With its position, distance and access, it is isolated from the settlement, but its current state is not in conformity with environmental standards, while a particular risk lies in occasional fires that generate additional air pollution both of the immediate and the broader surroundings, including also parts of Belgrade’s urban zone.

Downstream from the settlement of Vinča and Belo Brdo archaeological site, towards the south, a hilly landscape begins stretching along the Danube all the way to Smederevo. This is a landscape of exceptional

natural characteristics, where forests and arable land – mostly covered in orchards and vineyards – intertwine dotted with holiday homes. Local river fishermen catch fish that is prepared at restaurants located on the riverbank or in higher positions with a view of the Danube and the plain of Banat region. In the centre of Grocka there is a protected spatial, cultural and historical ensemble of Gročanska čaršija, a characteristic ambience of a 19th century Serbian settlement.

5.3 Broader and direct surroundings – potentials and the planned situation

By its characteristics, the position in relation to the river and the city, as well as by the monument-based and environmental values of the settlement and its surroundings, Vinča represents a development possibility in the field of tourism, especially the cultural tourism, based on the potentials of the archaeological sites, the cultural property as an initiator of activities and recreational tourism based on the potentials of the Danube.

Apart from Belo Brdo archaeological site, there are also three international cultural trails in the direct surroundings of the place that represent an important value: the Prehistoric, the Roman and the Ottoman ones, as the most representative form of connecting and presenting cultural heritage that provides a possibility of comparative viewing at the similarities and differences within a single or between different periods, thus making it possible to learn about developmental changes and to get a clear picture of the spatial and temporal dimensions of cultural phenomena that are manifested through architecture. As of recently, systematic explorations of the cultural heritage structures and complexes, their protection and adequate purpose have created a possibility of connecting valuable complexes with a new international cultural trail that could extend along Central and Southeastern Europe. The rich layering of international cultural trails provides opportunities for interconnecting the administrative area of Belgrade and its participation in international projects the topic of which is also the planning of the economic and cultural development of large spatial segments that are mutually linked by certain common interests.

When it comes to cultural heritage as the initiator of and the basis for tourist and other economically justified activities, it is necessary to point out the importance of the so-called National Trails, the most important ones for the municipality of Grocka being the First National Trail (connecting medieval and somewhat later-dated Serbian sacral and memorial monuments: remains of monastic units in the Danube zone (Slanci, Leštane, Vinča and Rajinovac) and the Third National Trail (connecting remains of architecture which, preserved in the form of spatial units, can evoke the character of life before the great planning and urban interventions in the second half of the 20th century. These are, primarily, the *čaršija* (Çarşı (Bazaar)) in Grocka, Obrenovac, etc.).

For the Republic of Serbia, the Danube Belt represents an essential developmental axis and a connection with European cities and regions in the Danube basin zone as a key segment of the European space, whose economy, traffic, tourism, cultural cooperation and other forms of interconnection among the populations will be supported by plans and projects linked to Corridor VII, i.e., a joint development strategy based on international cooperation between the Danube states and the region. The *Spatial Plan for the Special Purpose Area of the International Waterway E80 – the Danube* (Pan-European Corridor VII) recognises the cultural heritage of the Danube Corridor as a potential for establishing better international cooperation in the development of cultural tourism. One of the planned solutions is the construction of a passenger pier in Vinča, as well as a marina in Grocka. Generally speaking, the use and the development of the river bank primarily as a public space that with its position and form connects other public spaces, constitutes its specificity. The plan envisages activation of the coastal zone and accessibility to all categories of users.

In addition to the already well-known importance of the Danube as a waterway transport route, the current planning regulations also emphasise its value as an ecological corridor of international importance belonging to the ecological network of the Republic of Serbia. There are plans for a part of the coastal belt in the zone covered by the competition in the natural and close-to-natural state to be filled and for a revetment to be built in order to prevent a negative impact of any flood wave on the archaeological site. It

is planned to build a green corridor along the Bolečica, to landscape the surroundings of the site and the area of the active landslide, thus establishing an ecological network at the local level and a green infrastructure. The adequate planning of the relation between the constructed and the open spaces, and the preservation of the landscape pattern based on the use of land have ensured the preservation and improvement of the characteristic structure and the landscape.

There are plans to have a road-railway corridor through the territory surrounding the area covered by the competition as a link between the new bypass motorway from Bubanj Potok to Vinča and the road-rail bridge over the Danube. This is a very important traffic route for Belgrade, through which all economic and long-distance traffic will be directed circumferentially in relation to the city's territory. The plans stipulate that this corridor on the left bank of the Danube will be connected with the road and street network of Pančevo and further in the direction of the Romanian border. Also, there are plans to have an exit from the motorway bypass, via "Boleč" interchange, which provides for a link between the motorway and the local road network.

The current planning documentation envisages, within the planned Boleč sewerage system, the construction of a wastewater treatment plant "Vinča" in line with the spatially most demanding concept – complete wastewater treatment, with a position on the right bank of the Bolečica in the area of the confluence of the Bolečica and the Danube.

5.4 Current planning documentation in the area covered by the competition and in the direct surroundings

The area covered by the competition belongs to CM Vinča, within the administrative area of the Municipality of Grocka and the City of Belgrade.

The current planning documentation in the area covered by the competition and in the immediate vicinity consists of the following spatial and urban plans:

- Spatial Plan for the Special Purpose Area of Belo Brdo archaeological site, *"The Official Gazette of the RS," no. 85/2018*, for which the Decision on the preparation of amendments and supplements is currently being worked on
- General Regulation Plan for the construction area of the seat of a local self-government – City of Belgrade – unit XX, municipalities of Grocka, Palilula, Zvezdara and Voždovac – (settlements Kaluđerica, Leštane, Boleč, Vinča and Ritopek), *"The Official Gazette of the City of Belgrade," no. 66/17*;
- Detailed Regulation Plan for the primary structures of Boleč sewerage system – PHASE 1, *"The Official Gazette of the City of Belgrade," no. 47/16*;
- Spatial Plan for the Special Purpose Area of the international waterway E80 – the Danube (Pan-European Corridor VII), *"The Official Gazette of the RS," no. 14/15*;
- Spatial Plan for a part of the urban municipality of Grocka, *"The Official Gazette of the City of Belgrade," no. 54/12*;
- Regional Spatial Plan for the Administrative Area of the City of Belgrade, *"The Official Gazette of the City of Belgrade," no. 57/09*;

The subject of the amendments and supplements to the SPSPA for Belo Brdo archaeological site primarily concerns the purposes and individual segments of the traffic solution in the area covered by the competition in order to harmonise them with the needs linked to the setting up and implementing Belo Brdo Archaeological Park complex, as well as in order to harmonise the SPSPA with the Tourist Area Study which is in the final stages of development. Also, the affirmed solutions from this competition will constitute one of the bases for the amendments and supplements to the SPSPA.

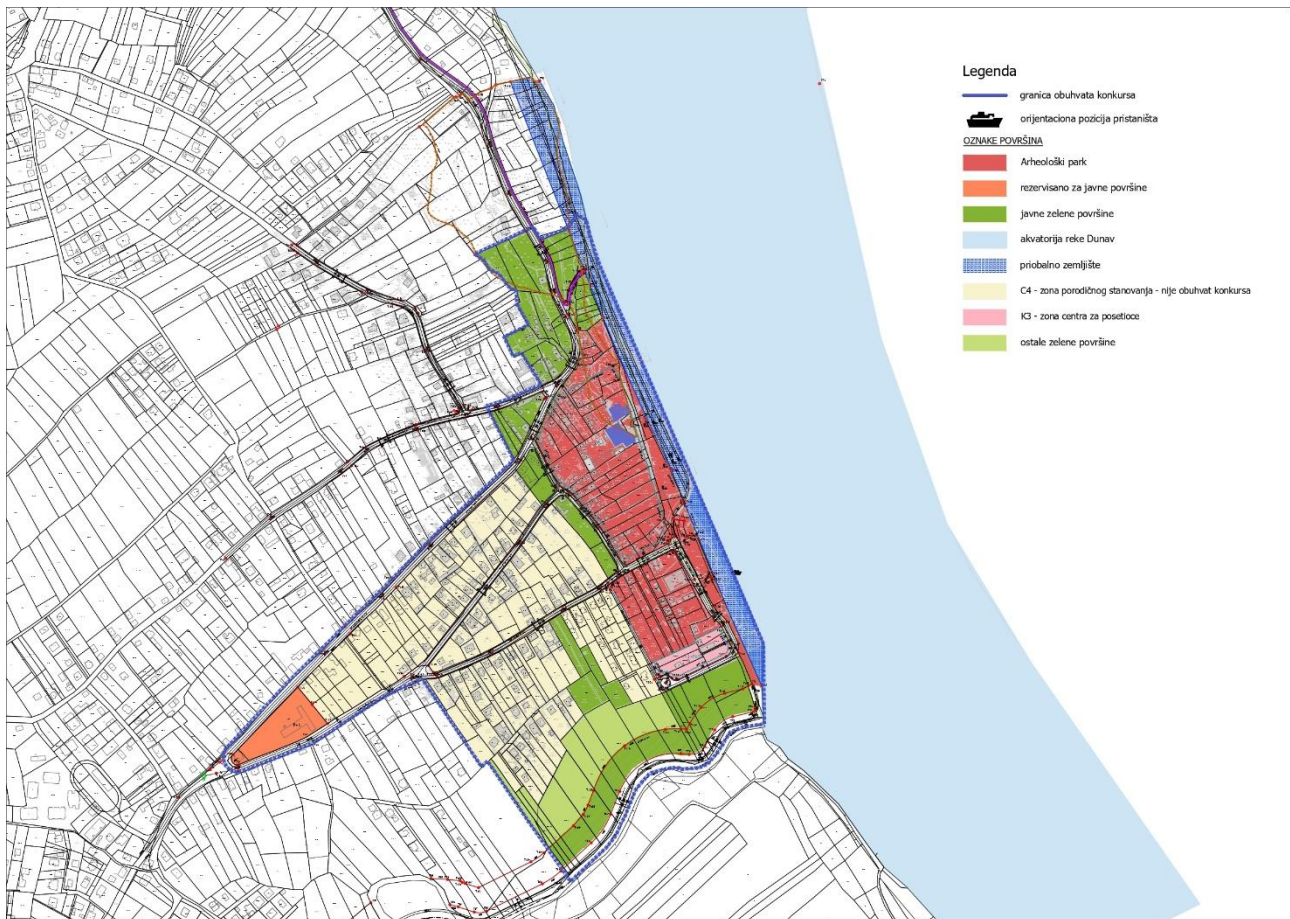


Fig. 30. Planned purpose of the land according to the SPSPA for Belo Brdo Archaeological Site for which the Decision on the preparation of amendments and supplements is currently being worked on

The SPSPA for Belo Brdo Archaeological Site has defined three zones of the site's protection in compliance with the degree of the site's protection:

1. the archaeological site – 1st degree of protection,
2. the protected surroundings of the archaeological site – 2nd degree of protection,
3. the area where the existence of the site has been confirmed – 3rd degree of protection.

The coverage of the zones in accordance with the degree of protection is not the subject of the amendments and supplements of the SPSPA.

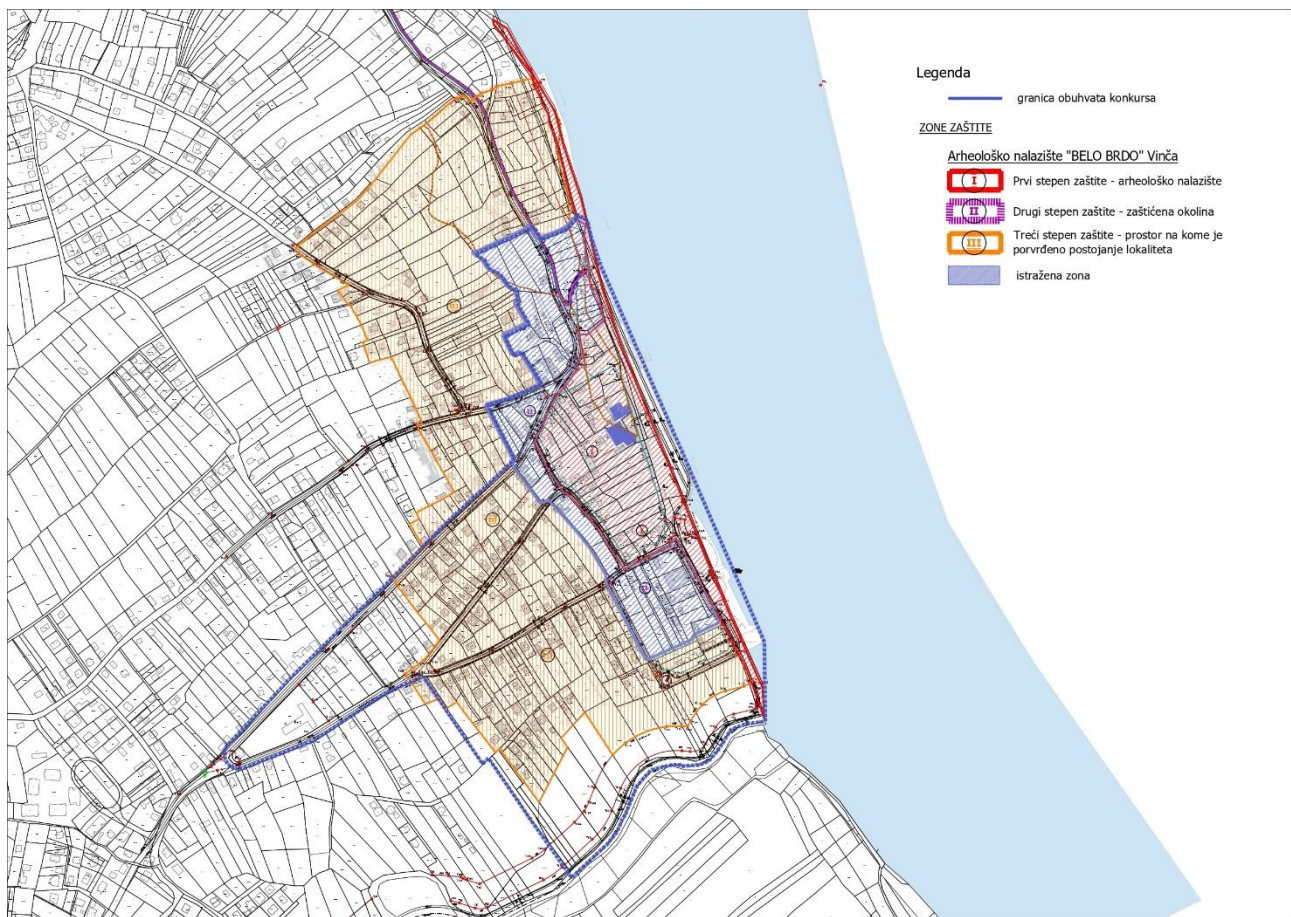


Fig. 31. Protection zones of the archaeological site according to the SPSPA for Belo Brdo Archaeological Site

6 SPECIFIC CHARACTERISTICS OF THE AREA

6.1 Natural characteristics of the area

Morphological characteristics of the terrain

Generally speaking, the terrain covered by the competition, which morphologically represents the coastal zone of the Danube and the first river terrace of the Bolečica, slopes slightly towards the Danube (from southwest to northeast) and towards the Bolečica (from north to south). The absolute elevations of the terrain in the zone covered by the competition range from 87.0 m above sea level, in the far northwest part covered by the competition, to about 72.0 m above sea level on the bank of the Danube and the bank of the Bolečica.

In the zone of the archaeological site under the current conditions, the absolute terrain elevations in the exploration zone are around 84.0-87.0 m above sea level. The exploratory drilling in the area of the site has established that the thickness of the archaeological layer is 6.4-7.8 m. The archaeological layer lies in humus, the former surface of the terrain, which was in the exploration zone established at the elevation of around 77-81 m above sea level with a decline towards the Bolečica. The predominant morphological shape at the subject location is a vertical section 5-10 m high that once constituted the very bank of the Danube. The vertical section has been partially formed during the archaeological excavations as well. Within the subject location, it is possible to observe morphological forms of the former-dormant landslide. There is a visible frontal scar, 3-5 m high, while the body of the landslide ends in a vertical section in the direction of the Danube.

In the zone covered by the competition the riverbank of the Danube is not adequately, and consequently not durably, secured and urbanised. In the part of the riverbank next to the archaeological site, there is a segment of a partially formed revetment, with the elevation of the crown for the protection against high

waters with a recurrent period of 50 years at an elevation of 74 m above sea level. If observed from the Danube towards the riverbank – the top of the promenade is at around 74.0 m above sea level, then flattened – the lower plateau (concrete and grass) with the width of 20-40 m at the elevations of 74.0 - 75.0 m above sea level, then the vertical “section” 7-10 m high and the upper terraced – higher plateau at the elevations of 84.0 -87.0 m above sea level. The current state of the Danube coastal zone in this segment is such that the vertical section in the zone of the archaeological site is temporarily supported from the lower plateau in order to prevent further sliding of the terrain. Upstream from the revetment, over the length of around 200 m, the protection of the riverbank has been done up to the elevation of 72 m above sea level and this zone has been activated without any special development for the needs of the local population.

Hydrogeological characteristics of the terrain

The geological, lithological and morphological characteristics of the terrain, as well as the anthropogenic factor, have caused appropriate hydrogeological characteristics of the terrain in which the subject location is situated. In area covered by the competition, there is a free aquifer of compacted type that has a hydraulic connection with the rivers Danube and Bolečica. This feeding of the aquifer is done by the draining of groundwater from the direction of the slope in the background, as well as partly by the infiltrating of the precipitation and partly by the “losses” from the water supply network and wastewaters.

The new exploration works conducted in September 2011 established that the groundwater level at the time of the monitoring in the promenade zone (the lower plateau) was at the depth of 3.7–3.9 m in relation to the current surface of the terrain, at the elevation of 71.0 m above sea level. On the higher plateau in the zone of the archaeological site, the groundwater level was established at the depth of 9.2–10.2 m from surface of the terrain, at the elevation of 77.6–74.0 m above sea level. The direction of the groundwater movement is towards the Danube and the Bolečica.

During the surveying, the water level of the Danube was at the altitude of 69.8 m above sea level, which corresponds to the minimum water level of the Danube of 69.75 m above sea level. Therefore, during any hydrological year, significantly higher groundwater levels should be expected in the planned area.

On the basis of the established groundwater levels, the surveying has concluded that in addition to the influence of the Danube and the Bolečica, the runoff waters and the household wastewaters also have a significant impact on the state of the water in the ground, because there is no sewerage network in the wider area.

Geological composition of the terrain

According to the existing documentation, the geological structure of the wider zone of the subject location consists of sediments of the Quaternary and Neogene age. The Quaternary sediments can be found in the surface layers of the terrain where the Holocene (Q_2) and the Pleistocene (Q_1) formations are present. The Holocene sediments are represented in alluvial deposits in the oxbow lake facies (Q_{2am}), flood facies (Q_{2ap}) and riverbed facies (Q_{2ak}), on the slope of the “first” river terrace (Q_{2at_1}) and deluvial sediments (Q_{2dl} , Q_{2dpg}). The Pleistocene formations consist of sediments of the “second” river terrace (Q_{2at_2}). As for the Tertiary formations, the Miocene-Sarmatian sediments (M_3^1PL) have been discovered in the wider area of the subject location and they are represented by sands, marls, clay marls, sandstones, gravels, conglomerates and organogenic limestones.

According to the latest geotechnical explorations, we cannot talk with certainty about the geological composition in the zone of the archaeological site. Namely, the surface archaeological layer (A), 6-8 m thick, stands out very clearly on the terrace and the section, while the soil filled at the foot (nt) is about 4.5 m thick. These sediments represent recent formations.

Beneath the archaeological layer on the terrace plateau, there is a very thin layer, 1.5–2.0 m thick, that stands out and it certainly belongs to the Quaternary-terrace sediments (Q_{2at_1}). These sediments are represented by clay dusts (not by loess) that are covered with a humus layer. The archaeological layer and the Quaternary sediments at the foot of the terrace are missing.

Under the Quaternary sediments there are sediments the age of which is debatable. On the terrace (higher plateau) these sediments, which we have called marl dust, are about 8.5 m thick, while at the foot below the embankment (dredged sand) they are 4-5 m thick. According to the experience of a number of eminent geologists who have examined the core of the boreholes, they can be classified as the Neogene - Pliocene sediments (PI), while in the section these same sediments contain a lot of fauna that classifies them as Eopleistocene (Q₁, PI?).

The sediments found below the elevation of 70 m above sea level on the terrace and below the elevation of 65 (67) m above sea level at the foot of the terrace can be classified as sediments of the Sarmatian age (M₃¹), but have not been faunistically proven. They are represented by gray sands and marls. In terms of sedimentology, they are not similar to the Sarmatian thin-layered marls with aragonite along the stratification plane that are located near the subject location on the Danube bank.

The Accompanying Documentation: I INFORMATION GRAPHIC APPENDICES, the Engineering Geological Map of the terrain covered by the competition scope is attached.

Climate characteristics

The climate in Belgrade and its surroundings is moderately continental, with four seasons and around 2,096 sunny hours a year, with the highest medium values in July and the lowest ones in December.

The annual precipitation flow has the predominant continental type characteristics, with the maximum in June. The amount of precipitation is 670.0 mm on an average per year and it predominantly includes rain and sometimes hail, icy rain and snow. The highest number of days with precipitation is in April, June and December.

The average monthly values of the relative air humidity range from 63% (April and July) to 82% (December).

The subject area, in the context of Belgrade, belongs to the topoclimatic zone of hilly hinterland characterised by an average annual temperature of 11°C. The mean monthly temperatures range from 0.0°C (January) to 22.1°C (July). During the summer months, there are days with daytime temperatures above 35°C and tropical nights (with temperatures above 20°C) from June to August. The number of days with a temperature higher than 25°C is 95 per year.

Belgrade is a windy area exposed to south-easterly, north-easterly, northerly and north-westerly winds. The most common and the strongest is a south-easterly wind – *košava* that blows throughout the year, with the maximum in September and during the winter, and the minimum in June and July, with the average speed of 25 to 45 km/h and storm surges of up to 130 km/h. The north-westerly wind blows mostly in the summer months, with the maximum average speed of 36 m/s. The coldest winds in winter are the northerly and the north-easterly ones. Taking into account the position and the orientation, the area covered by the competition is directly exposed to the *košava*.

6.2 Green areas and watercourses

Green areas and forests

Within the scope of the zone covered by the competition, there are no public green areas and forests. The area is characterised by mosaically distributed vegetation within curtilage plots (landscaped green areas with utilitarian species, individual trees and groups of trees), forest remnants, vegetable gardens, orchards and leas. The banks of the Bolečica and parts of the bank of the Danube are overgrown with natural vegetation consisting of woody and shrubby species. The area of the cultural property and its protected surroundings is dominated by green or undeveloped backyards, arable land and orchards, fallow lands in various stages of rotation, as well as individual trees and groups of trees. In the south part of the area covered by the competition, there are arable land plots, orchards, meadows, as well as leas with natural vegetation in different stages of rotation.

Along with the affirmation of the potentials carried by the existing green areas, the planned public green areas will represent a part of the unique system of the green areas of Belgrade.

Watercourses

The Danube is the most important watercourse here and its right bank is within the area covered by the competition, its resources are used in every sense and it significantly defines the landscape and the environmental characteristics of the area which is the subject of the competition.

As the only pan-European waterway corridor, the most important waterway connecting Black Sea with North Sea and the backbone of the inland waterway network, navigable along its entire course through the Republic of Serbia, and an ecological corridor of international and national importance, together with the archaeological site, the Danube is the primary development resource in the subject area. The zone covered by the competition includes the right bank of the Danube from km 1145+000 to km 1144+000. Along with the assertion of the tourist potential of the Danube supported by the construction of a passenger pier for the inner waterway transport, the planning solution emphasises the importance of the Danube as an ecological corridor of international importance belonging to the ecological network of the Republic of Serbia. The plans provide for the filling of the coastal zone and the construction of hydro-technical structures for the use and protection of the waters (embankment/promenade), with the adopted elevation of the crown at 76.50 m above sea level.

The boundary of the area covered by the competition is defined on the south side by the regulation of the left bank of the Bolečica. The Bolečica is a short river (12 km), a right tributary of the Danube, it springs in Vrčin and along its entire length, to its confluence with the Danube in Vinča area, it flows through the suburbs of Belgrade. Most of the riverbed, except for the last 3 kilometres to the confluence, is concreted. With ecological revitalisation of its current polluted state, the Bolečica could be a valuable resource in the subject area, however, the *Detailed Regulation Plan for the Primary Facilities of Boleč Sewerage System - PHASE 1* ("The Official Gazette of the City of Belgrade," no. 67/16) stipulates the construction of a utility complex "Vinča" – a wastewater treatment plant of Boleč sewage system on the right bank of the Bolečica (in line with the spatially most demanding concept – complete treatment), including also the positioning of the main drainage collector within the river regulation. The subject DRP also defines the construction of hydro-technical facilities for the protection against high waters on both riverbanks, with a defined elevation of the embankment at 76.50 m above sea level, as well as the landscaping of the subject area.

6.3 Traffic

In line with its geographic position within the regional and the European contexts, Belgrade is a part of the harmonised trans-European and pan-European transport and traffic networks.

Along with the road network intended for motor traffic, a special role is played by the waterway – the Danube Corridor, as a valuable tourist resource, a part of the trans-European waterway, which together with the Rhine and the Main is the most important waterway on the continent 23,000 km long.

The territory of Serbia is also included into the network of the European recreational long distance paths. A trail through Eastern Serbia, including Belgrade and Smederevo, is a part of the European long distance path E4 and it also provides for a possibility to include the area covered by the competition into that trans-European route. In addition, the potential of the configuration of the terrain and the natural resources of Belgrade and its surroundings, with the presence of historical and archaeological heritage, ensures a continuous increase in the number of formed hiking trails, both recreational and thematic ones.

The city of Belgrade has 83 km of not very systemically interconnected bicycle paths that primarily cover the urban area. There are plans to expand and improve the network and to activate a public bicycle system.

Current situation

The area covered by the competition is situated 14 km southeast of Belgrade, on the right bank of the Danube, and it has a relatively favourable traffic and geographic position, but the traffic infrastructure, which is vital for tourism growth, is underdeveloped. From the direction of Belgrade, the observed area can

be reached indirectly via Smederevo Road, while a crossroad of state roads of the IIA class: 153 (Smederevo Road) and 154 (Ring Road) provides a decent connection with Belgrade-Niš motorway (A3).

The primary street network of the area covered by the competition and its immediate surroundings consists of streets Profesora Vasića (which also provides a link with Smederevo Road), Vinčanska and Miloša Obrenovića. Other streets in the immediate vicinity are a part of the secondary street network, equipped with traffic signs and markings, but the carriageway is insufficiently wide and without pavements.

Taking into consideration the predominant current purpose of the area – family housing, the vehicle parking is done within the pertaining plots. The parking of the vehicles of the archaeological site's visitors takes place within the archaeological site on a parking lot situated along the bank of the Danube.

The potential of the Danube, an exclusive resource in the context of tourism, both in the zone covered by the competition and its immediate surroundings, where there is no passenger-pier infrastructure, is completely unused, except for the needs of individual vessels and without an adequate and safe access.

Public urban passenger transportation – there is a bus subsystem of the public passenger transportation with one bus line connecting Vinča with Belgrade. Within the settlement, the vehicles run along Profesora Vasića, Palih boraca and Miloša Obrenovića streets.

Bicycle traffic – in the zone covered by the competition and its immediate surroundings there are no bicycle paths.

Planned situation

The general goal is the development of all types of traffic through revitalisation and rehabilitation of the existing types of traffic and advancement of the currently inactive traffic potentials, increasing the level of traffic services and safety, and traffic accessibility of the tourist space through the following:

1. reconstruction of the road and street network and the forming of good quality traffic lines that touch upon and cut through the area;
2. providing of the necessary number of parking spaces for the visitors
3. providing the access for the tourists arriving by the river by constructing a passenger pier "Vinča"
4. development of the other types of traffic – bicycle and pedestrian/hiking paths

- Road and street network

The street network development concept is based on the improvement of the connection between the street network within the area covered by the competition and the street network of the wider territory. Broadly speaking, the development of the traffic infrastructure implies the establishment of the motorway and railway corridor, as a part of road corridors X and XI. The said corridor connects with the road and street networks of Pančevo via the planned bridge on the Danube and leads further towards the Romanian border. The planned motorway bypass is located along the boundary of the subject area on the southeast side. There are plans to have an exit from this bypass, via "Bolež" interchange, which will provide for a link between the motorway and the local road network.

- Inner waterway transportation

The area covered by the competition includes a part of the right bank of the Danube within which, according to the concept of the river traffic development, there are plans to construct pier "Vinča" for the access of smaller vessels (tourist ships of the inner (Serbian territory) waterway traffic) and public transport vessels within the new, waterway subsystem of the public transportation in Belgrade. The city's waterway transportation foresees three basic corridors of passenger flows which, in addition to their importance in the public passenger transportation, also render a special value to the development of tourism in the city of Belgrade. The subject area belongs to the eastern corridor: Sava Pier – Karaburma – Višnjica – Velikoselski rit – Forkontumac – Pančevo – Vinča – Ritopek – Grocka.

- Bicycle traffic

There are plans to have a two-way bicycle path in the subject area along a route parallel to the Bolečica, then along the bank of the Danube and, from the boundary of the archaeological site southwards, within the profile of Vinčanska Street. The planned development of the bicycle traffic within the area and its immediate surroundings is foreseen in line with the bicycle path development concept for the territory of Belgrade, in order to connect these paths with the European corridors passing through Belgrade and Serbia (EUROVELO 6). The inclusion of this zone into the bicycle path system for the territory of Belgrade is planned via a path from Vinča to Pančevo bridge, where the connection with the mentioned European corridor is also foreseen.

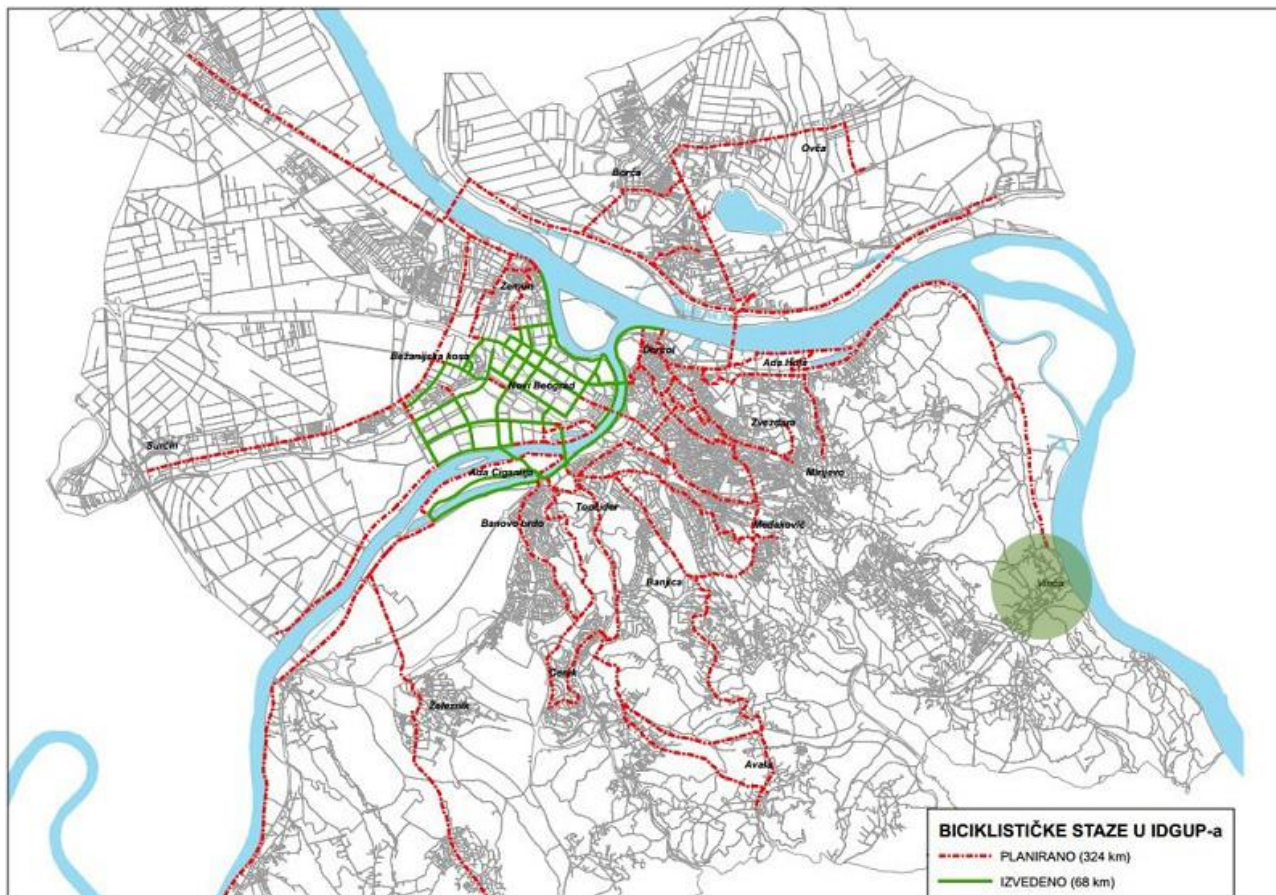


Fig. 32. Belgrade bicycle path map

6.4 Infrastructure

Current situation

In terms of infrastructure, the area covered by the competition and its direct surroundings are poorly and inadequately equipped and developed. The existing infrastructure is of uneven quality.

- Waterworks network

Within the area covered by the competition, there is partial coverage by a waterworks network and a significant number of the households have dug wells.

- Sewerage network

There is no utility sewerage network within the boundaries of the area covered by the competition.

- Electrical grid

The area covered by the competition is not adequately covered by electricity infrastructure, both in terms of the capacities and in terms of the qualitative characteristics.

- Telecommunications network

The area covered by the competition is adequately covered by telecommunications infrastructure.

- Hot water distribution system

There is no water distribution system and facilities in the area covered by the competition.

Planned situation

Bearing in mind that the current planning documentation, both for the area covered by the competition and for its surroundings, envisages development by advancing the potentials and introducing new purposes and offering new elements, which suggests fundamentally different needs from the current ones in terms of the infrastructural equipment, the development of infrastructural systems is planned in line with the development of the area.

6.5 Nature conservation and environmental protection

Nature and landscape conservation

According to the basic landscape characteristics, the area covered by the competition and its immediate surroundings belong to the landscape type of “Danube coastal zone – the sloping section of the right bank of the Danube.” This is a cultural landscape that reflects the traditional ways of using the land, in accordance with the characteristics and the limitations of the natural environment in which it is located. The favourable position between the Danube and Šumadija region’s mountains Avala and Kosmaj, has led to the development of agriculture and animal husbandry, and later of fruit growing and viticulture. The irregular, hilly terrain at 250 to 300 m above sea level is mostly dominated by small fields bordered by a rich network of hedges, with a large share of orchards and vineyards. The course of the Danube, its banks and their beauty make a landscape that provides a unique visual experience. One of the key units of this type of landscapes is Belo Brdo archaeological site. In the cross-section of cultural layers, visible from the bank of the Danube, it is possible to see the formation and development of settlements over the period of nearly 7500 years. In the context of the Danube and the hilly hinterland, the wider area of the site has a visual identity and specific landscape values, as well as all the characteristics of a historic cultural landscape.

In the zone covered by the competition, there are no protected areas for which protection procedure has been conducted or initiated, there are no ecologically significant areas of international importance belonging to the ecological network of the Republic of Serbia and there are no recorded natural properties, except for the Danube, a part of the right bank of which is within the boundaries of the area covered by the competition. With its coastal zone the Danube is an ecological corridor of national and international importance (Decree on the Ecological Network (“The Official Gazette of RS,” no. 102/10)), because it connects ecologically important areas in the Republic of Serbia, as well as the ecological networks of the neighbouring countries.

The natural vegetation on the banks of the Bolečica, as well as the Bolečica itself constitute a natural value. Individual trees and groups of trees, borderlines between plots of land and hedges that are extremely important for the migration of species and consequently for the preservation of the biodiversity also have a great importance for the nature conservation.

The area declared through the planned preservation of the existing purposes or the change of the purposes aimed at safekeeping the recognised authenticity are made possible by the keeping of: the historic context of what has been built here, the natural values of the area and the introduction of the area in the carefully thought through and appropriate economic flows.

Environmental protection

From the aspect of environmental protection, the immediate surroundings of the area covered by the competition constitute a very complex and partially degraded environment. Considering the purposes, potential air pollutants are the municipal waste landfill “Vinča” and the Institute of Nuclear Sciences “Vinča,” while possible pollutions may also originate from traffic and stationary sources.

There are no significant noise sources other than traffic.

On the territory of the municipality of Grocka, to which the settlement of Vinča belongs, there is no monitoring of the quality of environmental factors, except in the segment of surface waters, the quality of which deviates from the prescribed norms, which is also contributed to by inadequate infrastructure, especially in the field of wastewaters.

On the other hand, the subject area is characterised by favourable microclimate conditions and significant natural resources, primarily water.

The concept of environmental protection is based on the commitment to sustainable development of the city of Belgrade and consequently of the considered territory as well, which constitutes a continuous process of striking a balance between the use of the natural resources and the further development of urban functions of the city with the monitoring of the quality of air, waters and soil, currently lacking in this area, with the aim to protect and improve the environment at the level of the European standards.

6.6 Protection of the cultural heritage

In addition to the Decisions that formulate and categorise the protection of Belo Brdo archaeological site in Vinča, the SPSA for Belo Brdo archaeological site and the conditions of the competent Institute for the Protection of Cultural Monuments, which are integrated into the Terms of Reference of this competition, the protection of the cultural heritage in the area covered by the competition has also been treated in all spatial and urban-planning documents relevant for this area as the key criterion for the planned development.

Under the *Law on the Spatial Plan of the Republic of Serbia from 2010 to 2020*, preserved and protected cultural heritage is a part of the vision for the spatial development of the Republic of Serbia, while “the protection, controlled and sustainable use of nature, natural resources, natural and cultural heritage” is defined as the fourth out of five basic goals of the plan. The commitment linked to cultural heritage is that “the areas with protected, developed and adequately presented cultural heritage will increase the attractiveness and competitiveness for investments and development of tourism” with the aim “to characterise cultural heritage as a developmental resource, to protect, develop and use it in a way that will contribute to the establishment of regional and local identity in conformity with the European protection standards.” Among the most important areas in that sense, the plan also includes archaeological sites from prehistory, where Vinča belongs to “the priority cultural areas that ought to enjoy special treatment, irrespective of their status within the protection service.”

The *Regional Spatial Plan for the Administrative Area of the City of Belgrade* recognises the diversity of cultural heritage on the territory of the city as developmental potential and it places possible directions of the development into the recreational and tourist potentials of the Danube, as well as the improvement of cultural properties and their use as the generators of economic, cultural and tourist activities. By considering the cultural heritage of “the administrative area of Belgrade and its metropolitan as one of the fundamental elements of the general development and spatial development, the basic goal of the protection, development and improvement of the cultural properties is integrative protection of cultural heritage and its management, as the generator of tourist and broader economic development. The RSPAACB treats Belo Brdo site in Vinča as a site of priority importance the development of which is based on integrative protection that constitutes a coherent system of public interventions created to stimulate and balance private and social initiatives which should learn to see cultural heritage as a non-renewable resource, a source of identification (recognition) and cultural capital that can be used for different types of renewal.

The *Decree on Developing the Spatial Plan for the Special Purpose Area of the International Waterway E80 – the Danube (Pan-European Corridor VII)* recognises the cultural heritage of the Danube Corridor as a potential for establishing better international cooperation and for the development of cultural tourism, while Belo Brdo archaeological site is inscribed in the list of cultural properties that is a part of the SPSA the Danube. The general goal of the protection of immovable cultural properties is “creation of a regional

identity based on the preservation, protection and tourist valorisation of the cultural heritage of the Danube region,” while the operational goals are “activation of the potentials of cultural heritage as a developmental factor, integral authenticity of cultural properties and their surroundings, protection of the properties from uncontrolled construction and good quality accessibility from the waterway, attractive presentation and interpretation, as well as the creation of conditions for better regional and international connectivity based on cultural identity.”

The *Spatial Plan for a Part of the Urban Municipality of Grocka* also bases the planning concept for the protection, enhancement and development of cultural heritage on the principles of integrative protection and it entails a correlation of three key elements – preservation, enhancement and use of cultural properties – as an effective mechanism that will create suppositions for durable protection of the heritage and integration into modern developmental trends in the municipality, as the only realistic path for its survival and rehabilitation. The plan sees the exceptional value and uniqueness of Belo Brdo archaeological site in Vinča as a potential for cultural and scientific connection of this area at a national and international levels, with the possibility to integrate Belo Brdo archaeological site into the cultural and tourist offer of the wider region.

7 AREA CHARACTERISTICS – COMPETITION SCOPE

7.1.1 Current state of affairs – location and the construction fund at the location

The location where the formation of Belo Brdo Archaeological Park complex in Vinča is planned with facilities for the Visitor Centre and the Neolithic Scientific Research Centre, and the necessary accompanying facilities includes: the right bank of the Danube – from the confluence with the Bolečica in the south to the boundary the archaeological site (1st degree of protection), the area of the protected surroundings of the archaeological site (2nd degree of protection), the area south from the boundaries of the protected surroundings of the archaeological site to the regulation of the Bolečica between the regulation of the bank of the Danube in the east and the limits of competition scope in the west, the area along the left bank of the Bolečica in width of approx. 100.0 meters, that is, approximately 200.0 meters in the westernmost part and the old school and the active post office land parcels.

The future Archaeological Park complex encompasses five specific subunits:

- Archaeological Site
- Visitor Centre
- Neolithic Scientific Research Centre
- Coastal zone of the Danube – walking area, pier and revetment
- Archaeo park (within which the main parking lot of the Complex with accompanying facilities is planned)

mutually linked by free areas of the complex that include traffic, green and pedestrian zones, and other necessary accompanying facilities. The total area of the Complex in the scope of the Competition is 223,590 m², or about 22.36 ha.

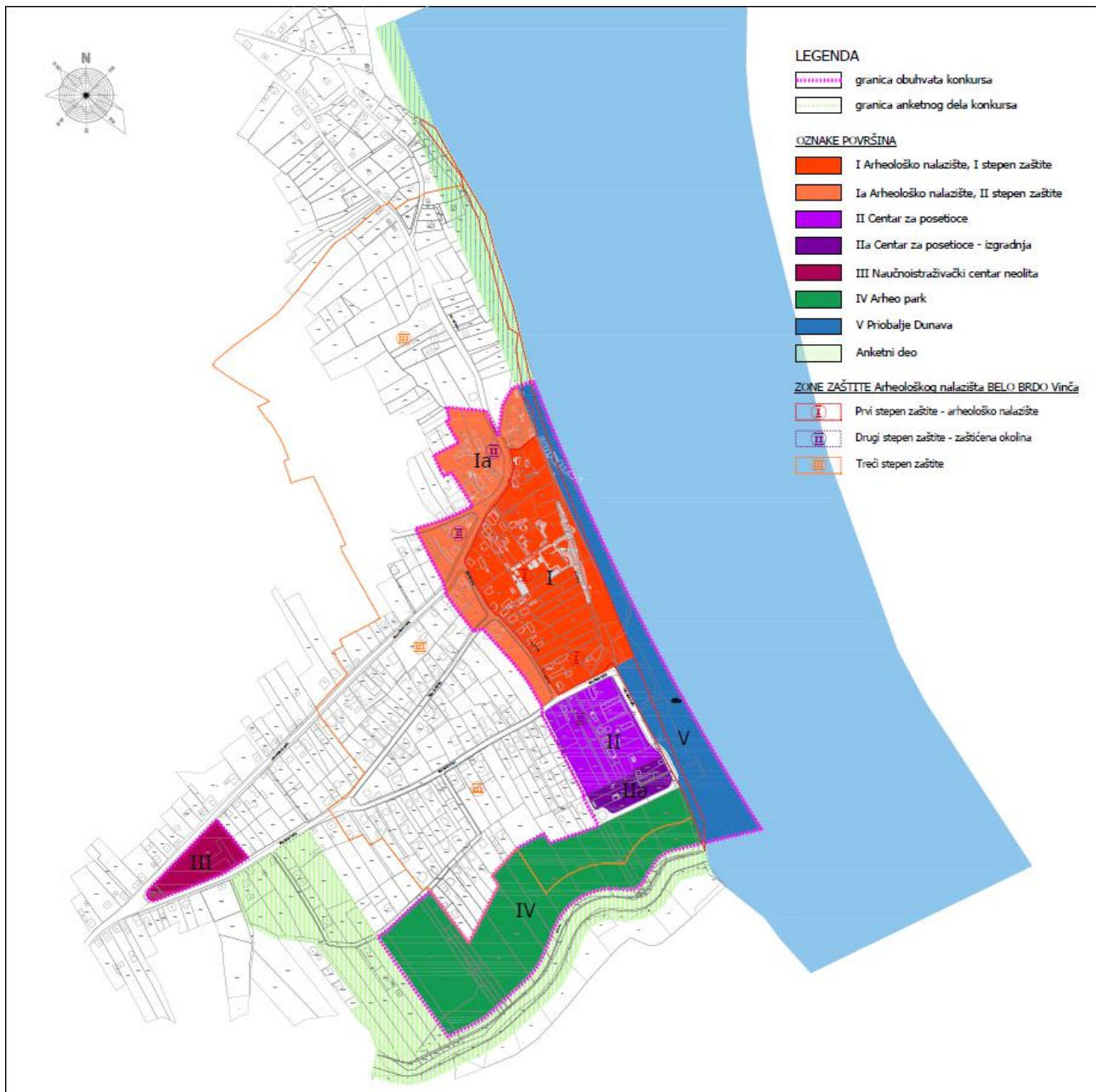


Fig. 33. Overview of the area covered by the competition with subunits

Subunit Archaeological Site

The archaeological site is an elevated plateau where people used to live and which in the past was right next to the river. The inhabitants of the Neolithic settlement depended on the river and that is why there are archaeological layers and the long duration in this limited space. The part that nowadays also constitutes the tourist focus is the place where life and settling were most intense, which is manifested through the 10 m high profile that naturally slopes, while the remains of the layers decrease in the directions of north, south and west.

The area of the *Archaeological Site* subunit includes the dominant part of the archaeological site – 1st degree of protection with the total surface area of around 52,050 m² and most of the protected surroundings of the archaeological site – 2nd degree of protection of around 32,150 m² with the total surface area of around 84,200 m². The zone of the *Archaeological Site* subunit covered by the 1st degree of protection consists of cadastral parcels: 2014, 2015, 2016/1, 2016/2, 2016/3, 2018/1, 2018/2, 2018/3, 2018/4, 2019/1, 2019/2, 2020, 2021, 2022, 2023/1, 2023/2, 2023/3, 2023/4, 2024, 2025/1, 2025/2, 2025/3,

2026/1, 2026/2, 2026/3 , 2026/4, 2026/5, 2026/6, 2027/1, 2027/2, 2027/3, 2027/4, 2046/1, 2046/2, 2046/3, 2047/1, 2047/2, 2047/3, 2048/1, 2048/2, 2619/5 and parts of cadastral parcels 2619/5, 2619/6, 2619/7, 2619/8, 2619/9, all belonging to CM Vinča, and that section covered by the 2nd degree of protection includes cadastral parcels: 1992/1, 1994/1, 1994/2, 1995/1, 1995/3, 1995/4, 1996/1, 1999/1, 1999/2, 2000, 2011/1, 2011/2, 2011/3, 2012, 2013/1, 2013/5, 2013/6, 2017/1, 2017/2, 2017/3, 2017/4, 2049/1, 2049/2, 2728 and parts of cadastral parcels 1992/2, 1992/3 , 2017/5, 2017/6, 2017/7 and 2691/1.



Fig. 34. Orthophoto image with the boundary of the archaeological site with the 1st and the 2nd degree of protection as the unit covered by the competition

The site in zone 1st degree of protection, as an area where explorations have been carried out continuously, constitutes the backbone of the future Belo Brdo Archaeological Park that will be used for further explorations and tourism.

The access to the site is possible from the west, using the existing road network, as well as from the direction of the Danube. The observing of the site from the water, in the context of the setting, provides a far better possibility to come up with conclusions about its character. Viewed from the shore, as it is approached, the archaeological site constitutes a high profile that rises from south to north, reaching the maximum height of 10 m in the central section of the site. Although this profile is partly covered in vegetation, the height and the configuration of the profile are clearly visible.



Fig. 35. Current state of affairs of the archaeological site

Source: Archives of IPCMS



Fig. 36. Appearance of the high archaeological profile, 2009

source: Archives of the IPCMS

Under the present circumstances, the part of the subject space that is privately owned is used for housing – individual plots of land with single-family residential buildings, auxiliary facilities and gardens, while the part of the space that is owned by the state is used as orchards (cp no. 2026/4, 2026 / 5, 2026/6, 2027/2, 2027/4, 2048/2 and 2047/2 all of CM Vinča) and as the active area of the archaeological site where the

explorations are carried out and that is visited by tourists (cp no. 2023/1, 2023/2, 2023/3, 2024 and 2025/2 all of CM Vinča).



Fig. 37. Appearance of the high archaeological profile, 2021

source: Archives of the IPCMS

Currently, the archaeological site can be accessed solely from the side of the river bank, following Nikole Pašića street.



Fig. 38. Riverbank and the position of the archaeological site, view from the south side, 2014. Source: Archives of the IPCMS



Fig. 39. Appearance of the archaeological profile, 2007

source: Archives of the IPCMS



Fig. 40. Appearance of the archaeological profile, 2014

source: Archives of the IPCMS

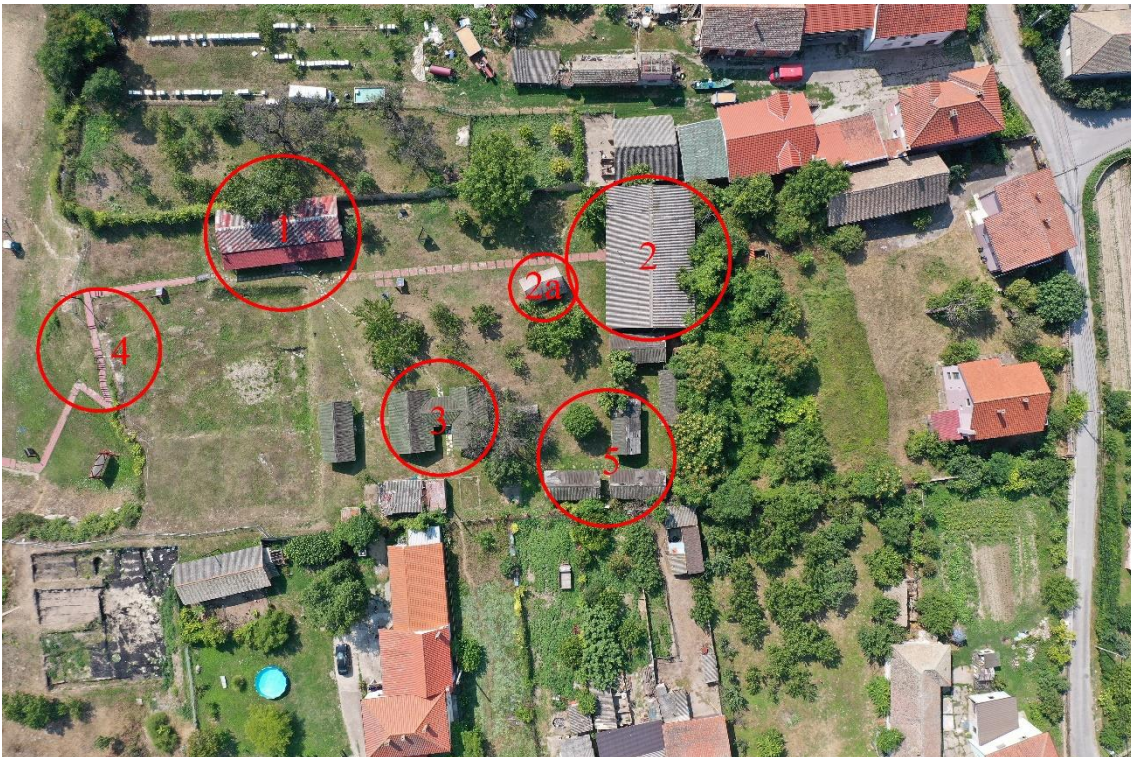
The access from the north side comes across an archaeological profile of the plot of land in which the excavations were carried out from 2011 and in 2019. In this part of the profile it is possible to notice deep cracks caused by atmospheric and vegetation influences and the impact of the landslide in this part of the site.



*Fig. 41. Appearance of the atmospheric and erosion changes and vegetation influences in a part of the archaeological profile, 2014
Source: archives of the Institute for the Protection of Cultural Monuments of Serbia*

The central part of the archaeological site was excavated until 2009 (cadastral parcel 2025/2 of CM Vinča). This area of 400 m² represents a dug-out section up to 1.5 m deep, covered with geotextile, sand, gravel and geonet. In this way, the remains of the youngest phase of the Neolithic settlement are protected.

Along the western and northern edges of the plot of land, there is a group of temporary buildings distributed over a rectangular layout.



*Fig. 42. Appearance of the current area where tourists are received: 1. Building housing the site's security, 2. Museum exhibit, 2a. Neolithic house replicas, 3. Covered structures with benches, 4. Access stairs, 5. Storage facilities
Source: archives of the Institute for the Protection of Cultural Monuments of Serbia*

The buildings are made of wood, with shallowly dug foundations. In the period when they were first assembled, they were used for the stay of the team members during the excavations and as working premises. Taking into consideration that nowadays they are mostly unsuitable, they are either used as storage facilities – for keeping soil samples and subsamples for flotation and further analyses, for drying materials after the excavation or they are empty.

In one of these buildings, on the western border of the plot, a new museological exhibition was opened in 2012 covering an area of 100 m². It includes 260 exhibits from the latest excavations and parts of the structures that have been conserved and removed from the dig. A replica of a Neolithic house was made in front of the building in 2020. Information boards have been set up on the plateau and it is also used for occasional thematic exhibitions. This space is used to receive visitors, where the curator-guide talks about the archaeological site. In case of group visits, the central building is used – a covered space with benches.



Fig. 43a, 43b. Exhibition area at the archaeological site opened for visitors in 2012

Source: Archives of the IPCMS

North of this plot is the area that has been explored since 2019 and a part of the site that is overgrown with vegetation. Also north and west of the central part of the site, there are privately owned plots of land with houses and auxiliary facilities.

The western part of the archaeological site, next to Belo Brdo Street, consists of plots with residential houses.

The cadastral parcels covered by the 1st degree of protection of the site that are not owned by the state are in various stages of expropriation, with the aim that all cadastral parcels within the scope of the 1st degree of protection become state property through expropriation as soon as possible.



Fig. 44.a, 44.b Appearance of the west boundary of the archaeological site

Source: Archives of the IPCMS

Area earmarked for the subunit of the Visitor Centre

The area earmarked for the *Visitor Centre* subunit covers the area of around 23,260 m², it encompasses the area south of the archaeological site (1st degree of protection), from Nikole Pašića Street to the zone earmarked for the Archaeo Park, between the regulation of the archaeological site (1st degree of protection) in the east and the planned pedestrian path in the west. As regards the protection of the archaeological site, this area belongs to the 2nd (mostly) and the 3rd degree of protection. The zone

intended for the construction of the Visitor Centre (within the scope of the 3rd degree of protection) consists of cadastral parcels no. 2028/14, 2028/15, 2028/16, 2028/47, 2028/48, 2028/77, 2028/120 of CM Vinča.



Fig. 45. Orthophoto image with the marked area intended for the Visitor Centre

The zone of the exterior area supporting the Visitor Centre, within the 2nd degree of protection, consists of cadastral parcels no. 2028/16, 2045/1, 2045/2, 2045/3, 2045/4, 2045/5, 2045/6, 2045/7, 2045/8, 2045/9, 2045/10, 2045/11, 2045/16, 2045/18, 2045/19, 2045/20, 2045/21, 2045/22, 2045/23, 2045/28, 2045/29, 2045/30, 2045/31, 2045/32 and a part of c.p. 2028/26, of CM Vinča.

In its current state, the area earmarked for the *Visitor Centre* represents undeveloped hinterland of the coastal zone and plots of land used for single-family housing, while the plot of land that stands out is the one containing a commercial building on cadastral parcel no. 2045/1, built before the establishment of the protected surroundings of the archaeological site (2009), which is not in operation today and is in a neglected state.

The new purpose of the area entails the removal of all existing facilities when adjusting the land to its purpose.

Area earmarked for the subunit of the Neolithic Scientific Research Centre

The area earmarked for the *Neolithic Scientific and Research Centre* subunit, with the total surface area of around 7900 m², is situated at the crossroad of Profesora Vasića and Nikole Pašića streets and it includes cadastral parcels no. 2070/1 and 2070/4 of CM Vinča. Under the present circumstances, within the subject area there is the building of the old primary school (2070/1) that has not been used since the construction of the new primary school building and a building without characteristics linked to any purpose that is currently accommodated so that it can be used as the Post Office (2070/4).

The said structures have no architectural value. The new purpose of the area entails the removal of all existing structures.



Fig. 46. Orthophoto image with the presentation of the area intended for the Neolithic Scientific and Research Centre

Areas intended for the subunit of the Coastal zone of the Danube

The Coastal zone of the Danube that is the subject of this competition with the planned use of the revetment, the promenade, green areas and the pier, encompasses the area between the regulation line of the low waters and the boundary of the archaeological site (1st degree of protection), from the confluence of the Bolečica in the south to the boundary of the area covered by the competition in the north.

In terms of water protection and urbanisation, this area was not adequately treated in the past. In the section of the riverbank next to the archaeological site, there is a segment of a partially formed revetment built during the 1980s, over the length of 260 m, with the crown elevation of 74 m above sea level. When observed from the Danube in the direction of the site, it consists of a promenade and a flat plateau that is 20-40 m wide. The current state of the Danube bank in this segment is such that the vertical section in the zone of the archaeological site, which is 7.0-10.0 m high, is temporarily supported from the flat plateau in order to prevent further landslides. Upstream from the revetment, over the length of around 200 m, the protection of the bank has been done up to the elevation of 72 m above sea level and this zone has been activated without any special development for the needs of the local population.



Fig. 47. Orthophoto image with the presentation of the coastal zone of the Danube in the area covered by the competition

The largest section of the riverbank in this zone is occupied by a green area which is used from time to time to install elements of a children's playground. Right next to the river there is a paved path intended for pedestrians, which is used as a carriageway for vehicles, while a paved area in front of the entrance to the archaeological site is used as a parking lot. During the archaeological excavations, construction containers needed for the stay of the expert team are placed on this surface.

In the north part of this area, there are structures built partly on the riverbank, partly above the water (stilt houses), used as holiday homes and restaurants, and they are a product of illegal construction and do not have a use permit. A dozen structures, densely lined up next to each other, have also been built on a part of the riverbank next to the archaeological site, also illegally and without a use permit.

Several structures have been set up on the river, along the revetment.

When observed from the south upstream, the first structure is a dock for smaller vessels. This dock, placed on piles in 2020, which was organised by and for the needs of the Museum of the City of Belgrade. In the context of this Competition, the position and purpose of this dock are binding.



Fig. 48. Pontoon – the dock installed in 2020 Source: archives of the Institute for the Protection of Cultural Monuments of Serbia

The next structure on the water, the first north of the dock, is a ship-restaurant “Srbija” that operates solely at this location. The ship-restaurant is connected with the land by a pedestrian bridge and it is located at the subject site without a permit.

The structure on the water north of the ship-restaurant “Srbija,” a small pontoon, is used as the terrace of restaurant “Maestral” positioned on the dry land. The structures has a seasonal character and does not have a use permit.

Area earmarked for the subunit of the Archaeo Park

The zone earmarked for the Archaeo Park subunit covers the area in the hinterland of the Bolečica’s left bank zone, from the boundary of the SPSPA for Belo Brdo Archaeological Park to the north, and it consists of cadastral parcels no. 2028/5, 2028/6, 2028/23, 2028/24, 2028/30, 2028/32, 2028/69, 2028/110 of CM Vinča and parts of cadastral parcels no. 2028/18, 2028/19, 2028/20, 2028/21, 2028/22, 2028/23, 2028/25, 2028/33, 2028/34, 2028/35, 2028/37, 2028/70, 2028/84, 2028/85, 2028/86, 2028/109 and 2028/111, in a total area of 65 880 m².

Under the present circumstances, the subject area is owned by private individuals and it is used as of agricultural arable land.



Fig. 49. Orthophoto image with the presentation of the area intended for the archaeo park



Fig. 50. Confluence of the Bolečica and the Danube, view to the west

source: Archives of the IPCMS

8 TERMS OF REFERENCE

8.1 Competition subject, general guidelines and recommendations

The **subject** of the competition is the preliminary design of the scope for the Belo Brdo Archaeological Park complex in Vinča including the buildings for the Visitor Centre and the Neolithic Scientific and Research Centre, and it includes:

- Preliminary urban-planning and architectural design for the area covered by the Belo Brdo Archaeological Park complex,
- Preliminary design for the mobile elements and objects in the function of the Archaeological Site and the arrangement of the Protected surroundings of the Archaeological Site
- Preliminary architectural design for the Visitor Centre's building with associated outdoor area
- Preliminary architectural design for the Neolithic Scientific Research Centre's building with associated outdoor areas
- Preliminary design for the Archaeo Park area and the main parking of the complex with accompanying facilities
- Preliminary design for the development of the coastal zone of the Danube in the area of Belo Brdo Archaeological Park – promenade (arranged free and coastal areas activated with different contents), pier and revetment.

At the poll based design level, the subject of the competition includes also the preliminary designs for the arrangement of the left and the right banks of the Bolečica river adjacent to the zone covered by the competition, the area directly next to the traffic link between the Neolithic Scientific Research Centre subunit and the coastal of the Bolečica river, as well as the area of the Danube coast from the boundary of the zone covered by the competition upstream over the length of around 600m.

With respecting for the context of the location and its immediate surroundings, the exceptional importance of the archaeological site and the position of the area as a part of the coastal of the Danube – the longest and most important European waterway and an ecological corridor of international significance, all interventions need to be carefully considered with the aim to get to the best quality design solution possible, which is expected to enhance the functional and visual characteristics of the location and ensure the efficiency in the use of the space while preserving the uniqueness and value of the site. When conceiving the competition solution, it is certainly necessary to take into consideration the position of the Belo Brdo Archaeological Park complex in the context of the broader visible surroundings and the future development of the city of Belgrade.

The competition solution ought to exhibit a high conception level in the treatment of the cultural heritage protection which affirms contemporary tendencies in architecture. It is of exceptional importance to take into account, as an essential criterion, all aspects of the value and the irreversibility of the archaeological heritage, as well as the fact that this competition constitutes a part of the process of integrative protection of Belo Brdo archaeological site in Vinča through the promotion of its potentials as the generators of the scientific, cultural and tourist activities development.

An important element of the subject location are its potentials related to the visibility of the river and the connections with it, as well as the line of sight towards the river and the direct surroundings.

The competition solution ought to promote contemporary tendencies in architecture, as regards the shaping and developing of public spaces, including also a clear affirmative relation with all the sustainability aspects of the planned construction and development, both in connection with the realisation and in connection with the exploitation of all segments of the Complex.

8.1.1 Obligations as regards the forming of the space

- Recognisable architectural and urban-planning solution in conformity with the needs of the purpose, characteristics and importance of the site, which establishes a suitable bond with the surroundings;
- Urban-planning and architectural solution for the complex should be conceived in such a way that it is appropriate for the site within the scope of the ambience whole, both in terms of the physical structure and visual characteristics, and in terms of the programme, meaning the disposition of different contents;
- Character of the complex in the spirit and with characteristics of contemporary architecture;
- Primary requirements of the space organisation are the possibility of diverse flexible use, good spatial structuredness and easy orientation, simplicity and efficiency of the concept of communications;
- Movement of the users and visitors of the space should be logical, in line with the dynamics and the way of using different contents and the number of visitors.
- As regards the traffic, the incoming and outgoing roads ought to be organised clearly and simply;
- Ensuring good traffic accessibility without stationing dormant motor traffic outside the zone envisaged by the programme;
- Good functional connectivity within the subunit and between subunits, both in the horizontal and the vertical plans;
- Affirmation of the existing natural values and the ambience of the landscape, and the preservation of the autochthonous characteristics of the coastal zone;
- Protection of the archaeological site zones and the conditions for further archaeological surveying;
- Conditions and measures for the protection of cultural properties are binding;
- Vertical regulation of all permanent structures foreseen in the complex should be planned in line with the requirements related to the flood defence – the elevation of the ground floor's floor should be at 76.50 m a.s.l. or higher;
- Use of the materials that have adequate environmental characteristics, in conformity with the programme and use-related needs and regulations in terms of safety;
- The designed solution need to provide for infrastructural equipment at the highest level, in terms of the comfort of the visitors and users of the space;
- All access routes, the areas intended for pedestrian movement and manoeuvre areas ought to ensure unhindered movement of the persons with difficulties in moving and persons with disabilities.

8.2 Programme elements and guidelines for the Belo Brdo Archaeological Park Complex

The area of the Belo Brdo Archaeological Park complex, which consists of several subunits, should be conceived in such a way that, both functionally and in terms of design, it forms a unique ensemble with recognisable visual identity.

The target groups of the users of the Belo Brdo Archaeological Park in Vinča are experts – archaeologists and experts from other professions in the context of the multidisciplinary character of the subject research, visitors – tourists (individual/group visits), students, pupils, employees of the Archaeological Park and the locals population.

The capacity of the Complex is planned for up to 1100 simultaneous visitors, taking into account all subunits.

The key manner in which the Belo Brdo Archaeological Park complex is to be used, with the aim to ensure its sustainability, is promoted through several aspects, including also the decreasing of the motor vehicle traffic within the Complex to a minimum and ensuring the so-called “soft” mobility within the tourist area. The users need to be provided with conditions for “cruising” the space with the help of rented segways, bicycles (ordinary and tandem) and scooters – *Rent-a-bike; Rent-a-segway; Rent-a-scooter*. Along the bicycle paths, there should be parking stations for parking and the pick-up / drop-off of these types of vehicles (for instance, in the thematic areas of the Archaeo Park, certain contents of the Danube coastal, etc., or in the places where one can expect a “stop” due to other attractive contents). It is also necessary to provide conditions for the movement of dedicated electric vehicles, primarily for the elderly and less mobile individuals, in such a way that there is a link between the parking lot and all the subunits of the complex, while a similar purpose can be served by a small train for which a daily ticket may be bought that allows the entry and exit at different stations depending on the interest.

In the context of promoting sustainability, greening of roof surfaces of the new structures, their activation for the purpose of energy and other potentials, in accordance with the function of the facility and the needs of the users of the purposeful contents, also give their share of contribution.

It has been envisaged that the access to the Archaeological Site and the Visitor Centre, as well as to different other facilities will be allowed only to visitors with tickets. In this context, it is necessary to provide for the possibility of fencing the Complex (except for the subunit Neolithic Scientific Research Centre), bearing in mind the specificity of the functional needs and the diversity of the user groups for each of the subunits.

The communication system in the Archaeological Park Complex should provide good connection of all subunits with the parking zone and between them, as well as comfortable movement for all categories of users.

It is necessary to provide conditions (in terms of communications) so that the guiding of organised visits has a continuous flow (circular guiding), starting from the Visitor Centre.

The subject of the competition task is also the design of the furniture within the ground floor arrangement of green and free areas of the Complex, which must obligatorily contain elements for respite (sitting, lying down, communication), elements for parking bicycles / segways / scooters with chargers (with an option to provide energy via solar station), lighting, waste baskets, as well as other elements depending on the specific needs of the subunit. The lighting is required primarily for public safety, movement control and the lighting of signs and instructions, but it should be kept in mind that lighting is an important element in the context of expanding the usability of the destination in the evening, an important factor in creating social atmosphere, while it may also be a valuable resource in the promotion of the ambience.

Elements of furniture, cladding and equipment of the ground floor, provided from adequate, resistant, durable and sustainable materials, in accordance with the concept of the proposed design.

8.2.1 Programme elements and guidelines for the subunit of the Archaeological Site

The Archaeological Site as one of the subunits of this competition includes the area of the archaeological site – 1st degree of protection (according to the *Decision on the establishing of Belo Brdo in Vinča site as an archaeological site, “The Official Gazette of the RS,” no. 71/2009*) and most of area belonging to the protected surroundings of the archaeological site – 2nd degree of protection.

The graphic presentation of the coverage of the Archaeological Site subunit is provided in the tender documentation – I INFORMATION GRAPHIC APPENDICES, appendix BOUNDARY OF THE COMPETITION AREA WITH THE PRESENTATION OF THE SUBUNITS.

The archaeological site (1st degree of protection) is an area within which active explorations are currently being carried out. The explorations are not carried out continuously on the entire surface of the site that enjoys the first degree of protection, but rather partially, covering different segments of this area, in line with the advancement of the expropriation process and the planned activities. The protected surroundings of the archaeological site (2nd degree of protection) is not a zone of active explorations at the moment, but it has the potential to become one in the future.

The target groups of the Archaeological Site subunit users are primarily experts – archaeologists and experts from other professions in the context of the multidisciplinary character of the subject research, visitors – tourists (individual/group visits) under controlled conditions and employees of the Archaeological Park, which does not preclude occasional participation of other groups of users of this space, also under controlled conditions.

ARCHAEOLOGICAL SITE (1ST DEGREE OF PROTECTION) includes the area bordered by the eastern regulation of Belo Brdo and Profesora Vasića streets, the southern borders of c.p. no. 2728, 2017/3, 2017/4 of CM Vinča, the regulation line that separates the archaeological site and the revetment, and the northern regulation of the planned extension of Nikole Pašića Street.

The primary access to the Archaeological Site (1st degree of protection) for visitors should be provided from the direction of the Visitor Centre subunit, with adequate connection between the Archaeological Site and the coastal and it is necessary to provide a checkpoint in the access zone. The primary approach for researchers is variable and it depends on the specific exploration area.

For the area of the Archaeological Site (1st degree of protection), the competition solution should provide for the presentation of the course of the archaeological exploration *in situ*, under controlled conditions, as well as further archaeological explorations and the protection of archaeological zones. The new structures at the site should be planned as **temporary, prefabricated/dismantle and mobile, aboveground, structures and elements** for different needs: the needs related to the work and gathering of researchers (A), the needs related to the access and movement of visitors (B) and needs related to the protection and presentation of the archaeological remains (C).

(A) STRUCTURES AND ELEMENTS FOR THE NEEDS RELATED TO THE WORK AND GATHERING OF RESEARCHERS

For the needs of the work and gathering of researchers, it is necessary to provide for the structures and elements (canopies, shelters, platforms...) which are mobile, flexible and multiplicative with the possibility of modification according to the needs of different positions, weather conditions and capacities, during the intended use.

The elements intended for the work and gathering of researchers include two categories, the first of which is positioned outside the area of the current exploration, while the second one is located in the area that is being explored (an archaeological probe).

The first category of the elements (the positions outside the exploration area) includes:

- area used for respite/break, which entails protection against sun in the summer and protection against the wind and cold during colder months.
- area used for office work and *ad hoc* meetings on the exploration strategies and dynamics, etc.,
- breakfast area,
- kitchenette and toilet facilities for the archaeological crew,
- area for the storage of tools (smaller and bigger tools – wheelbarrows, buckets, shovels, spades, etc.) and expendable supplies (bags, boxes, big bags, etc.) during the excavations
- area for the temporary storage of the excavated materials (until they are transported).

The second category of the elements that is positioned in the area being explored (the archaeological probe) entails different structures – paths, platforms, fences, canopies, shelters, etc., that need to provide more adequate and safer movement across the dig and the protection against the sun and storms, both for the archaeological crew and for the archaeological layers during the unveiling and excavations.

When designing these areas, it is necessary to take into account that the archaeological site zone also includes an area for the disposal of earth during the excavation from which the earth is going to be transported away.

The dimensioning of the elements intended for the work and gathering of researchers should be done on the basis of a 5-researcher group and in the manner that will allow by multiplication to meet the needs of

larger researcher groups. The multiplication of the elements should be planned in such a way that it can satisfy different geometric and morphological conditions.

(B) ELEMENTS FOR THE NEEDS RELATED TO THE ACCESS AND MOVEMENT OF VISITORS

The elements for the access and movement of visitors (pedestrian paths, platforms) and for shorter presentations earmarked for visitors should be foreseen in the form of pre-fabricated/easy to dismantle platforms, ramps, etc., and systemic solutions for the temporary landscape arrangement without tall greenery and plant species that may endanger the protection of the archaeological site.

The prefabricated/dismantle pedestrian paths and platforms earmarked for visitors should be designed in such a way as to enable access, comfortable and safe movement near the site itself, without endangering the site and the works. The architectural solution should enable visitors to see the terrain next to and/or below the path and allow those who want to gain a more detailed insight (or follow the course of archaeological research for a longer period of time) to stall without disturbing passers-by. It is necessary that the paths are “elevated” in relation to the site in order to enable tourists to have the experience themselves of discovering an exceptional hidden cultural and historical heritage, while not disturbing the work of researchers with their presence.

Taking into account the impact of climate on the organisation of tourist activities (occurrence of windy days, rainy days and tropical days during the summer period), it is necessary to envisage smaller shelters for visitors within the pedestrian areas at the site.

The elements intended for short outdoor presentations ought to be dimensioned on the basis of 8 visitor groups, with the possibility of multiplication. The estimated maximum number of concurrent visitors to the archaeological site is 50, with a note that visits to the site involve smaller groups (each one with its own guide) that move along the defined paths (in a circular guidance model) according to the visit plan, so in this regard it is not necessary to provide conditions for the stay of all concurrent visitors at the same time in the same place.

It is desirable to consider the possibility of clearly setting apart two or more places within the archaeological site for the stalling of visitors (stationary observation points) in order for them to get acquainted with special/singled-out values of the site (e.g., watching the archaeological layers from the revetment or watching a group of houses (streets), watching selected archaeological artefacts, etc.).

(C) ELEMENTS FOR THE NEEDS OF ARCHAEOLOGICAL REMAINS PROTECTION AND PRESENTATION

It is necessary that the archaeological remains in the area of the site are protected against atmospheric conditions (rain, snow, frost, strong wind, excessive insolation, etc.). The solutions for this type of protection ought to be designed as temporary, prefabricated/dismantle and mobile elements (canopies, shelters) bearing in mind that owing to different weather conditions there is a possibility that condensation may be created in the enclosed space.

The presentation of the archaeological material should be such that there is no possibility of direct contact by visitors, except in the case of activities for which it is possible to foresee occasional participation of the public under controlled conditions (e.g., washing of the finds, sifting the soil, etc.).

When designing the solutions for the new structures at the site – the temporary, pre-fabricated/easy to dismantle and mobile structures and elements used for the explorations at the archaeological site, the needs of visitors and the auxiliary facilities, in addition to the mobility and flexibility, it is also necessary to provide for the possibility of phased implementation, taking into account the dynamics of the expropriation process that has so far been carried out on cadastral parcels no.: 2023/2, 2023/3, 2025/2, 2026/4, 2026/5, 2026/6, 2027/2, 2027/4, 2048/2 and 2047/2 of CM Vinča.

Since this concerns “construction” on an archaeological site, it is not allowed to form any underground spaces.

The existing structures at the archaeological site, which are currently used for organised gathering and work of researchers, as well as the structure presently used as an exhibition area, are planned to be removed.

The profile of Belo Brdo site has been created partly by the Danube water erosion and partly by the archaeological excavations and according to the currently valid legal and planning regulations, it constitutes an exhibit intended for the presentation. The demolition and constant building of new settlements formed the layers that successively raised the level of the ground, which is why this exhibit provides an opportunity to see the multi-millennial continuity of life in a single place, through almost 10m high cultural layer, the most valuable horizon of which is Vinča Culture that developed here for nearly 1000 years.

In this context, it is preferably to consider separately also a possibility of presenting this exhibit by providing for the vertical viewing along the profile, if allowed by the planned solution for the landslide rehabilitation (the rehabilitation project is enclosed with the tender documentation VI OTHER COMPETITION DOCUMENTATION).

THE PROTECTED SURROUNDINGS OF THE ARCHAEOLOGICAL SITE (2ND DEGREE OF PROTECTION), which belong to the Archaeological Site subunit, are currently not a zone of active explorations, but have an affirmed potential to become so sometime in the future. In this context, it is necessary in this section to plan primarily landscaped green and pedestrian areas accessible to all target groups of users, without using tall greenery and such plant species that threaten the protection of the archaeological site and in a way that entails the formation of pedestrian areas and segments by rising above the existing terrain (filling, platforms), bearing in mind the fact that valuable archaeological remains may be found already at a depth of 30 cm.

Within the Protected Surroundings of the archaeological site (2nd degree of protection), it is also necessary to envisage the prefabricated/dismantle Triage Centre facility northwest of the archaeological site (1st degree of protection), in one of the segments of the area mentioned below.

TRIAGE CENTRE

The Triage Centre facility should be planned in one of the following two locations:

- (1) the area bordered by the northern and western regulations of Vinčanska Street, north of the intersection of Vinčanska and Palih boraca streets that form cadastral parcels 1994/1, 1994/2, 1995/1, 1995/3, 1995/4, 1996/1, 1999 / 1, 1999/2 and 2000, or
- (2) the area bordered by the southern regulation of Palih boraca Street and the northern regulation of Vinčanska Street, southwest of the intersection of these streets that form cadastral parcels 2011/1, 2011/2, 2011/3 and 2012.

The Triage Centre facility that incorporates the following segments: triage area, field depot, material handling area, photo lab, conservation laboratory, workshop and auxiliary areas (toilet, kitchenette) should be designed as a prefabricated/dismantle, flexible, modular system structure, which, in terms of dimensions, can be adapted to the needs of the excavation capacities.

The organisation of the works at the triage centre implies the need for two entrances – an entrance for researchers and other participants in the work process and a cargo entrance earmarked for the delivery / dispatch of archaeological material that must provide for an easy and controlled access to transportation vehicle and equipment, taking into account both the possibly large weight of the material to be delivered and its possible fragility, as well as different weather conditions in which the unloading / loading may take place. The road access to the triage centre should be located outside the intersection zone of Vinčanska and Palih boraca streets.

Triage area

200m²

The triage area is intended for the cleaning, washing and sorting of the excavated material and it needs to be well connected with the field depot to which the packaged material will be moved after the triage.

The furnishing of the triage centre area includes: tables for the triage and packaging, shelves and frames for storing sieves for the drying of materials, furniture for the storing of equipment (bins, buckets, brushes, etc.) and connections for high capacity water supply and drainage. The structure for the storing of frames with the material to be dried (shelves on which the frames are placed) has the dimensions of 1x1 m and it is necessary for this element to provide the possibility of having direct warm air supply (e.g., heaters). Within the triage centre, there should be a smaller office space with an office desk for the needs of documentary work (computer, records, marking, archiving...).

Within the triage space, it is necessary to provide a storage room for expendable supplies, which include plastic boxes with the volume of 30 litres, T-shirt plastic bags of different sizes, freezer bags of different sizes, etc.

Field depot

100m²

The field depot is a facility (one or more rooms) intended for the temporary storage of archaeological material after the washing and drying. In most cases, the archaeological material is packed in plastic boxes of 30 litres (dimensions of e.g., 52x36x23 cm). It is necessary to provide space in the depot for shelves for the storing of the said boxes (minimum 120 boxes per year), then for the storing of whole/reconstructed vessels (dimensions of up to 1 meter high) and parts of immovable finds before/after conservation, as well as for separate finds of smaller dimensions that require special packaging. Within the depot, it is necessary to plan work surfaces (several tables) for opening and inspecting the boxes. It is necessary that the depot area is well ventilated and microclimatic, in terms of humidity and temperature, and controllable (constant temperature, no humidity).

Material handling area

50 -100 m²

The material handling area includes space for the installation of large work surfaces – tables, with the total surface area of at least 10m², for the handling of archaeological material and space for documentation-related tasks, one workplace (records, marking, archiving...) – one office desk with computer.

- *Triage area, Field Depot and Material handling area* entail almost daily receipt and circulation of archaeological material and in this regard it is necessary to provide for direct and adequate connections among these areas.

Photo lab

10 m²

The area is earmarked for taking photos and scanning objects for the needs of documentation and creation of digital models. In terms of the content, the photo lab includes: a photo studio with equipment, a tent, a movable desk and working area for the photo and computer equipment (laptop).

Material conservation laboratory

50 -100 m²

The area for the conservation of movable and immovable archaeological material includes: large, well-lit work surfaces (with the possibility of additional specialised lighting), a cabinet for chemicals and expendable supplies (glues, cotton wool, gauze, clips, scalpels, plaster, paints, etc.). It is necessary that this laboratory has the possibility of adequate ventilation and the temperature and humidity control.

Workshop

20 m²

The area for the storing of tools and for minor repairs, sharpening of tools.

Accompanying areas

The accompanying areas include toilets and a kitchenette that need to be dimensioned for the needs of 10 concurrent users.

All the existing structures within the area earmarked for the realisation of the Triage Centre are without architectural values and can be planned for removal.

8.2.2 Programme elements and guidelines for the subunit of the Visitor Centre

The segment of the competition area intended for the *Visitor Centre* subunit with the total area of 23 260 m², is located south of the archaeological site (1st degree of protection), from Nikola Pasic Street to the zone intended for the Archaeo Park, between the regulation of the archaeological site (1st degree of protection) in the east and the planned utility path in the west.

The Visitor Centre's building is planned in the southeast section of the subject area, in zone of the 3rd degree of protection of the archaeological site within cadastral parcels no. 2028/14, 2028/15, 2028/47, 2028/48, 2028/77 and 2028/120 of CM Vinča, while the rest of the subject area belonging to the Protected Surroundings of the archaeological site (2nd degree of protection) is foreseen for ground floor arrangement green and pedestrian areas with contents in the function of the Centre.

The graphic presentation of the coverage of the Visitor Centre subunit is provided in the tender documentation - I INFORMATION GRAPHIC APPENDICES, appendix BOUNDARY OF THE COMPETITION AREA WITH THE PRESENTATION OF THE SUBUNITS.

The planned premises of the Visitor Centre should provide conditions for receiving and servicing all categories of visitors of the archaeological site (individually and in groups) and the presentation of the cultural heritage of the archaeological site in the context of its promotion as a tourist resource.

The target groups of the users of the Visitor Centre subunit are primarily visitors – tourists (individual/group visits), students and pupils, employees of the Centre and other employees at the Archaeological Park Complex, which does not exclude occasional participation of other user groups as well (training courses, workshops, playrooms, etc.).

The Visitor Centre building includes areas intended for visitors and areas for work intended for employees at the centre. The areas for visitors are intended to accommodate up to 120 concurrent visitors (all categories of users, individual and group visits), providing the necessary professional and service information during the visit to Belo Brdo Archaeological Park, presentations of the archaeological site through various forms of exhibits (artefacts, multimedia presentations, lectures, discussions...), a souvenir shop – bookstore, catering facilities (café), as well as auxiliary segments required by all visitors (respite, toilets, lockers...). The areas for work include premises for guides, work of the administration and management of the Centre, premises for the security and CCTV service at the Archaeological Park Complex (including also the storage space for the surveillance equipment) and the necessary supporting and technical segments.

It is necessary to envisage independent entrances into the building for visitors and employees.

The outdoor space in the function of the Visitor's Center, in addition to the ground-floor free and pedestrian areas, also include contents for visitors outdoor breaks, exhibits and presentations, a garden of catering facilities of the Center and the like. Within the outdoor area supporting the operation of the Visitor Centre, it is necessary to envisage adequately equipped parking for visitors' bicycles / segways / scooters. When designing the organisation of the outdoor space in the function of the Visitor Centre, it is necessary to bear in mind the position of the separator / purifier – “the sewerage facility” within the scope of the local sewerage system planned in order to protect the archaeological site.

The graphic presentation of the planned route of the sewerage facilities and the position of the purifier is provided in the tender documentation - I INFORMATION GRAPHIC APPENDICES, appendix RESTRICTIONS ON THE COMPETITION AREA.

All existing facilities within the Visitor Centre subunit are without architectural values and can be planned for removal.

BUILDING

Visitor areas (accessible to visitors and employees)

Entrance hall with info-centre and accompanying facilities (ticket selling, lockers...)	up to 100m ²
Multipurpose exhibit area	200 m ²
Immersive experience room (multi-media presentation)	150 m ²
Area for meetings/lectures with the capacity of 100 seats	150 m ²
Community area for work and rest	100 m ²

Bookstore and souvenir shop (gift shop)	50 - 100m ²
Café	100m ²
Accompanying facilities (toilets, communications...)	up to 200 m ²

The access and the main entrance for visitors should be planned in such a way that it is equally accessible to visitors coming from the direction of the coastal and visitors coming from the direction of the parking, i.e., the walking and bicycle paths. In the immediate vicinity of the entrance for visitors, there should be space for the elements used for the parking of bicycles / segways / scooters.

The multipurpose exhibition area should, in addition to providing conditions for various exhibition concepts, enable thematic education through various educational models.

The gift shop should be positioned in such a way that, in addition to the access from the interior of the Centre, it also has an independent external access. The café should be dimensioned so that it has 40 seats inside and 60 seats in the garden.

All of the accompanying facilities earmarked for visitors (toilets, lockers, communications...) should be dimensioned on the basis of 120 concurrent visitors.

Work areas (accessible only to employees)

Office space for 4 curators	45-60 m ²
Offices for the management and administration (accounting, legal service)	60-80 m ²
Premises for the Archaeological Park Complex surveillance and security service	45-60 m ²

Accompanying facilities (kitchenette, toilets, communications...)

The office space should be designed as flexible with the possibility of different organisation models (classic offices or the “open-space” area) in line with the needs of each of the contents, with a note that the organisation of the space earmarked for management and administration should be foreseen as 3-4 classic offices.

The area intended for the Archaeological Park Complex surveillance service entails organisation in a manner suitable for the storage of equipment for electronic and video surveillance and the work with it.

All of the accompanying facilities earmarked for employees (toilets, kitchenette, communications...) should be dimensioned on the basis of up to 20 employees.

Total the Visitor Centre building (net surface area) up to 1400 m²

The planned position of the Visitor Centre building has the potential of good quality views of sight at the archaeological site and the Danube from the roof surfaces of the building. In this context, it is desirable to consider the activation of roof surfaces as a *green roof* of the roof garden type (semi-intensive / intensive green roof) as additional contents of the outdoor area of the Centre – the greenery (primary element), the viewpoint, the respite area, etc., intended for visitors and employees.

The elevation of the ground floor of the building, in conformity with the flood protection conditions, is at 76.50 m above sea level.

OUTDOOR AREAS

The outdoor areas in the function the Visitor Centre should be designed to provide conditions and facilities for respite and stay of visitors (and employees) outdoors, for displaying of exhibits and presentations, as well as for the needs of the catering facility’s garden, children playground, etc., including also adequate ground floor arrangement of free, pedestrian and green areas. All the segments of the outdoor areas of the Centre need to be dimensioned in line with the planned number of concurrent visitors.

The ground floor arrangement and landscaping should be planned in such a way that it is accessible to all categories of users, without any inclusion of tall greenery and plant species that may endanger the protection of the archaeological site and in a way that involves the formation of pedestrian areas and segments by raising them above the existing terrain (filling, platforms), keeping in mind the fact that most of the subject area belongs to the 2nd degree of protection of the archaeological site, that valuable

archaeological remains may be found already at the depth of 30 cm and that in the future the subject area may become a zone of active archaeological explorations.

When designing the solution for the ground floor arrangement, it is important to keep in mind the flood protection conditions – that the regulation line for high waters, i.e., the flood defence line is at the elevation of 76.50 m above sea level.

8.2.3 Programme elements and guidelines for the subunit of the Neolithic Scientific Research Centre

The area of the *Neolithic Scientific Research Centre* subunit includes cadastral parcels no. 2070/1 and 2070/4 of CM Vinča. The building on cp 2070/4 is foreseen to be removed, while within cp 2070/1 there is an old school building that is no longer functional, that is without architectural values and is also planned to be removed, but it is still possible that the competition solution provides for its reconstruction, i.e., the incorporation of the existing physical structure into the newly formed structure of the Neolithic Scientific and Research Centre.

The graphic presentation of the Neolithic Scientific Research Centre subunit is provided in the tender documentation – I INFORMATION GRAPHIC APPENDICES, appendix BOUNDARY OF THE COMPETITION AREA WITH THE PRESENTATION OF THE SUBUNITS

The goal of establishing the Neolithic Scientific Research Centre is to improve the research of Neolithic cultures in the Republic of Serbia and the region through multidisciplinary approach and methods, educational activities and popularisation of science. One of the primary motives for the setting up of the centre is the education and training of young researchers in the state of the art technological conditions, through project work and gaining of experience through practical work, multidisciplinary approach along with circular interchange of staff.

The document specifying the goals linked to the founding and competences of the Neolithic Scientific and Research Centre - Vinča Belo Brdo is enclosed with the tender documentation VI OTHER COMPETITION DOCUMENTATION.



The area of the Neolithic Scientific Research Centre consists of two functional units – the *research part of the centre (A)* intended for the work of researchers and the presentation of the research, and the *accommodation part of the centre (B)* intended for stationary stay of researchers.

The functional units of the Scientific Centre need to be designed in the way that ensures good connectivity among the units, as well as among different segments within each one of them. The entrances to the building (the number, position and purpose) should be designed in line with the needs of the activities of each one of the functional units. The vertical communications within the Research Centre should be envisaged in the way that enables comfortable movement for all categories of the area users (lifts), as well as in a way that ensures the meeting of the needs related to the transport of all types of samples and materials, given their possible large weight (freight lift).

The initial estimated number of employees at the Research Centre is 25 employees – laboratory assistants, operatives, IT experts, economists, a lawyer and the centre’s management.

The target groups of the users of the Neolithic Scientific Research Centre subunit are primarily experts – archaeologists and experts from other professions, administrative workers and associates of the Scientific Research Centre, as well as guests of the centre and participants in meetings/events, which does not exclude occasional participation of other groups of users (e.g., visitors of the activities intended for broader public that may be organised at the centre), under controlled conditions.

The architectural solution for the Neolithic Scientific Research Centre should be designed, both in terms of functionality and in terms of form, in the way that will in the future allow addition (construction / extension) of new premises, while providing adequate connections with the original segments of the centre.

(A) RESEARCH PART OF THE CENTRE

In functional terms, the research part of the centre includes two interrelated segments: the segment intended for *work areas (A1)* – laboratories and other types of work areas and the segment for *presentations and meetings/events (A2)* intended for research presentations and various types of scientific and professional events.

Regarding the segments of the research part of the centre, it is necessary to provide three independent entrances: an entrance for employees (provides access to the work areas, with entrance control), a cargo entrance with covered unloading / loading areas (provides for the needs related to the delivery/shipping of samples for the work area zone intended for laboratories) and an entrance for visitors (provides direct access to the spaces intended for presentations and meetings/events).

Within the research part of the centre or using a covered communication connected with it, it is necessary also to foresee a *Garage for off-road vehicles*. The garage needs to be dimensioned for the capacity of 5 vehicles, while within the garage it is necessary to provide conditions for their daily hygienic maintenance.

(A1) WORK AREAS

The segment of the research part of the centre intended for the work areas entails a controlled access available for employees and visiting researchers, as well as for the guests of the centre under controlled conditions.

The work area zone should be well connected with the entrance for employees, with the cargo entrance (laboratory), as well as with the segment of the spaces intended for research presentations and meetings/events.

LABORATORIES

Geophysical centre

100m²

The geophysical centre consists of a safe room for the storing of equipment and an area for maintenance and development.

The equipment storage room is intended for the storage of valuable geophysical equipment – fluxgate magnetometer with accompanying field equipment, total stations, GPSS, a drone. The access to the equipment storage room is in the category of strictly controlled access, which is provided only to persons with access permission.

The maintenance and development area is intended for occasional maintenance of the equipment, including also the checking of the equipment that requires more space for handling. Within this area, it is necessary to provide for the positioning of a total of five jobs posts: two jobs for the workshop operations – 2 desks measuring 2x1m and a tool shelf, and three jobs for the work on computers, each one with one computer. The minimum clear height of the area is 2.60 meters.

Laboratory for the preparation of organic samples

100m²

The area of the laboratory for the preparation of organic samples should be positioned in such a way as to provide conditions for strictly controlled access and a high level of security. As the work in this laboratory also implies work with highly flammable gases, it is necessary to provide conditions for adequate ventilation, good control of contamination and implementation of the necessary fire-fighting measures, both in terms of staying and working in the area, and in case of an evacuation. The minimum required clear height of the area is 2.60 meters.

Geo-archaeological laboratory

50m²

The geo-archaeological laboratory should be positioned within the ground floor area, or maybe on the first floor of the building, bearing in mind the need to deliver and ship samples that are often very heavy and require manual handling.

The geo-archaeological laboratory includes a “wet room” and a room with microscopes.

The “wet room” is intended for analysing soil samples – granulometry using the pipette method, determining of the pH, furnace for the analyses of the loss by annealing and determining of organic carbon content, etc., with the necessary laminars, fume cupboard, work surfaces, shelves and elements for storing spare parts and expendable supplies, sediment cutting and sample preparation machine, pXRF apparatus. The laminars and fume cupboards with fume hood – 2 pieces (each 120cm long with special ventilation), work surface areas – 4 tables each 2 meters long, on which the analysis apparatuses are placed and the area for granulometric analyses – 3 m² in which a sieve, pipettes, sample table and high-precision scales are placed. It is also necessary to have at the “wet room” connections for water supply and drainage, space and a machine for washing laboratory vessels, cabinets for chemicals, dryer, shelves for storing preparations and samples, etc.

The *room for storing microscopes*, i.e., for working with microscopes and analysing preparations, is an area with work surfaces (tables) used in order to place two microscopes – a metallographic/petrographic microscope with accompanying equipment (a computer and a digital camera) and a light/optical microscope. The dimensions of the microscopes – height 150 cm and width 80 cm.

The minimum required clear height of the geological laboratory area is 2.60 meters.

When organising the laboratory area, it should be taken into account that the equipment for laboratories will be procured successively, as well as that there is a possibility of changing the equipment (in line with the advancement of technology) and the expansion of activities.

Biological (bio-archaeological) laboratory

100m²

The biological laboratory should be positioned in such a way that in addition to the main access from the interior of the centre, it also has a direct connection with the outside area (yard) and a possibility of an independent water supply and drainage connection for flotation needs. This laboratory space should provide for the possibility of working on three microscopes and four investigative tables and space for storing biological material.

The investigative tables are 200 x 100 cm (with scale dividers on the side). For the needs of archeozoological analysis, it is necessary to have space for a comparative collection – shelves and drawers 2 meters high, 70 cm deep and 1.60 m long.

A special section within this laboratory is the office space where microscopes are located (dimensions of the microscopes – height 150 cm and width 80 cm), shelves with samples and expendable supplies.

The minimum required clear height of the bio-archaeological laboratory is 2.60 meters.

Pollen analysis laboratory

100m²

A separate room – a clean room (a room with controlled, filtered ventilation), for sample preparation. Ventilated laminar, a locker under key for keeping chemicals, laboratory tables. Storage space for keeping samples in cold conditions (box freezer or a cold room/freezer for storing plastic tubes 1 meter long).

Separate area for microscopes and samples. Light microscopes with 20x and 40x magnification, DIC, polarising light, digital camera, connected to an appropriate computer with software. Digital reference catalogues of pollen.

Computer laboratory + server room

150 + 30m²

The computer lab and the server room should be planned as two connected units. The area of the computer laboratory should be envisaged in such a way as to provide conditions for dividing the space into individual positions / boxes for a total of at least 10 job posts, three of which are intended for IT experts employed at the computer laboratory, while the rest are for visiting researchers and other employees at the centre. The server room should meet the requirements in accordance with the security needs related to the protection against high voltage shocks and fire protection.

OTHER WORK SPACES

Documentation + archives

30 m²

The area for storing publications, catalogues, books and periodicals and for storing archives that includes extensive field and project documentation covering the period of several decades of research at Belo Brdo site.

Storage/warehouse

20 m²

Storage space for expendable supplies, office supplies (paper, toner, expendable supplies), sanitary supplies (toilet papers, paper towels, soaps, cleaners, etc.) including a separate area for storing chemicals.

Office space for the management and administration

200 m²

The office space should be designed as flexible with the possibility of applying different organisation models (classic offices or an “open-space” plan), with a note that the organisation of the space intended for the management uses the model of 3 classic offices – manager’s office accessed independently and through the secretary’s office + space for smaller-scale meetings (6 seats). It is also necessary to provide conditions for the setting up of two independent offices with one job post each for guests participating in the work of the centre.

WORK AREAS – ACCOMPANYING FACILITIES

Toilets, kitchenette

The sanitary areas (toilets) and the kitchenette should be dimensioned for the total capacity of 25 daily employees + 20 visiting researchers.

(A2) AREAS FOR PRESENTATIONS AND MEETINGS/EVENTS

The segment of the Research Centre intended for presentations and meetings/events is available to all target groups of the users of the Research Centre space.

The zone intended for presentations and meetings/events needs to be provided with a direct access through the entrance for visitors (bearing also in mind situations for which it is necessary to provide access control) and an adequate connection with the work areas of the Research Centre and the accommodation part of the centre.

Multifunctional exhibition-conference area

500 m²

The exhibition-conference area includes the following

- a conference hall with the capacity of 150 seats, adequately equipped in terms of technology, flexible for various forms of presentations and communications, and easily dividable into three smaller halls with the capacity of 3 x 50 seats, and
- hall area (lobby) adjustable to the needs of different forms of exhibitions, cocktail parties, etc., which permits access to all the options of the conference room organisation; along with the hall area, it is necessary to envisage an auxiliary premise for the needs of preparing / serving beverages during cocktail parties, etc., which has a contact with the communication – link with the accommodation part of the centre.

2 conference offices

2x50 m²

The conference offices are intended for organising smaller-scale meetings with the capacity of 10 to 20 participants. They contain a conference table and chairs, and are organised and technologically equipped to

meet the needs of modern presentation models (video beam, screen, whiteboard...). The conference offices should be easily accessible from the lobby.

AREAS FOR PRESENTATIONS AND MEETINGS/EVENTS – ACCOMPANYING FACILITIES

Control room – area for the surveillance service of the Scientific Centre and the security 30-45 m²

The area intended for the CCTV service for the Scientific Centre entails such organisation that it is appropriate for the arrangement of the equipment for electronic and video surveillance and the work with it.

Handy storage room up to 50 m²

The storage room is intended for the storing of equipment used for the multifunctional exhibition and conference area (tables, display boards...) in the context of diverse possibilities for their organisation and use.

Sanitary areas

The sanitary areas (toilets) should be dimensioned for the total capacity of 150 concurrent users.

Communications, *break out* areas for (A1) and (A2) up to 15% of the gross surface area

The communications should be designed in a logical and rational way in accordance with the programme and in the spirit of the solution's design. The windshields, stairways, possible platforms and lifts ought to enable efficient circulation and good organisation and connectivity between the functional units.

TOTAL – RESEARCH PART OF THE CENTRE up to 1850 m²

(B) ACCOMMODATION PART OF THE CENTRE

The accommodation part of the centre is intended for the stationary stay of researchers and it includes:

10 – 15 accommodation units (20 beds) each one with its own bathroom around 400 m²

Small kitchen for receiving food and a possibility to prepare food, with smaller capacities on the spot around 50 m²

The small kitchen for receiving food is intended for receiving and serving food brought by catering suppliers with the size in line with the capacity of the Multifunctional Exhibition and Conference Area (150 concurrent users), as well as the food-preparation needs in line with the capacity of the accommodation part of the centre (20 users).

Dining room around 50 m²

Parlour around 100 m²

Accompanying facilities and communications around 120 m²

TOTAL - ACCOMMODATION PART OF THE CENTRE up to 750 m²

8.2.4 Programme elements and guidelines for the Archaeo Park and the main parking of the complex

The zone intended for the *Archaeo Park* subunit includes the area in the background of the direct coastal zone of the left bank of the Bolečica, from the boundary of the Belo Brdo Archaeological Park SPSPA towards the north and it consists of the following cadastral parcels: 2028/5, 2028/6, 2028/23, 2028/24, 2028/30, 2028/32, 2028/69 and 2028/110 of CM Vinča and parts of cadastral parcels: 2028/18, 2028/19, 2028/20, 2028/21, 2028/22, 2028/25, 2028/33, 2028/34, 2028/35, 2028/37, 2028/70, 2028/84, 2028/85, 2028/86, 2028/109 and 2028/111, with the total surface area of 65 880m².

The graphic presentation of the coverage of the Archaeo Park subunit is provided in the tender documentation – I INFORMATION GRAPHIC APPENDICES, appendix BOUNDARY OF THE COMPETITION AREA WITH THE PRESENTATION OF THE SUBUNITS.

In terms of the contents, the Archaeo Park includes four categories of the areas intended for visitors:

- areas earmarked for thematic features
- open spaces organised and equipped for multifunctional use – exhibits, workshops, multidisciplinary interactive events
- the outdoor work spaces, and
- areas for respite and relaxation

The first two categories are primary and green areas as the primary features in terms of the ambience.

The purpose of the areas with thematic features is to acquaint visitors with the everyday life and culture of the Neolithic Vinča, i.e., to provide such conditions that the visitors may have the experience of life in the Neolithic age. The thematic features include areas intended for the reconstruction of the conditions in which the daily activities of the Neolithic inhabitants of Vinča took place – food preparation, hunting, fishing, Neolithic crafts, activities related to grain growing and early metallurgy, models (whole or segments) of life-size Neolithic houses made by applying Neolithic construction techniques, then areas for alternative artistic features with themes and elements of the Neolithic Vinča's everyday life, production, rituals, as well as presentations of artistic and functional objects, plus providing conditions for interactive outdoor social games.

The themes will include:

- housing and housing activities (e.g., Neolithic kitchen activities that can be demonstrated in one of the Neolithic house reconstructions equipped with a hearth, stoves and storage vessels, or reconstruction of outdoor stoves where the baking method from the Neolithic era can be demonstrated)
- houses (residential buildings) – appearance and technology
- Neolithic activities – agriculture (e.g., presentation of the manner in which grains were grown), livestock husbandry, hunting (e.g., Neolithic bow and arrow shooting range as a simulation of hunting in an adequately positioned and secured area measuring 30x20m), fishing, collecting wild fruits
- Neolithic flora – exposition of the Neolithic flora (e.g., “Agriculture Museum/Botanical Garden” – with species of plants and grains that were present during the Neolithic period in Vinča, etc.)
- Neolithic fauna – mammals, birds, fish, wild and domestic animals (e.g., Neolithic Petting Zoo – young domesticated animals from the Neolithic period move freely within an area organised for the purpose, including also reconstructed “Neolithic” canopies as shelters from the heat...)
- utility, decorative, ritual and artistic objects
- tools, weapons, implements, household vessels
- objects of religious and artistic character

It is desirable that the areas intended for thematic features are designed as flexible and multifunctional, in terms of the implementation of different topics and with the possibility of changing the topic.

The multifunctional open spaces ought to provide conditions for exhibitions, interaction, as well as for holding thematic workshops for visitors of different ages, which as some of the topics may include the following:

- pottery workshop using Neolithic techniques,
- various workshops on scientific and research work and archaeological methods – how archaeologists obtain data, how archaeological material is processed
- playrooms – assembling pottery vessels from fragments
- archaeology for children – e.g., a field work workshop: an area where there are no archaeological remains prepared for digging with participation of the youngest visitors entails that 5x5 m probes with discarded pieces of pottery and house daub are covered with earth only to be dug by children, as well as workshops for knapping, carpentry, textile, pottery and similar activities. Flotation, wet rinsing of the finds is also interesting for children)

The outdoor work spaces should be envisaged through several options – individual work and work in smaller groups with a possibility of providing canopies and with adequate infrastructural equipment (solar chargers, etc.).

MAIN PARKING OF THE COMPLEX

Within the Archaeological Park subunit, in the zone of direct traffic access from the public traffic area, it is necessary to envisage the main parking of the Archaeological Park Complex intended for all categories of users (employees, visitors), all categories of passenger vehicles and buses/coaches, as well as special purpose vehicles: ambulance, OB vans, fire trucks and security vehicles.

The parking area should be planned as an open, independent, surface parking lot, with the parking capacity for 250 passenger vehicles (at least 5% of which is intended for vehicles of people with disabilities and reduced mobility) and 10 buses/coaches. No special parking spots are envisaged for special purpose vehicles.

In the parking zone it is necessary to plan a facility to be used as an info - point that should have conditions for the sale of tickets, distribution of appropriate material that will provide visitors with the necessary information about the features of the tourist area belonging to the Archaeological Park complex, as well as for the rental and disposal of bicycles, segways and scooters. Sanitary facilities (toilets) for visitors are also planned within this structure.

In terms of the capacity, the vehicle access to the parking lot (entrances/exits) should be positioned and planned in such a way as to ensure an unhindered flow. It is necessary to provide for good connection between the parking zone and the walking and bicycle paths, as well as all other communications that provide access to the features of the Archaeological Park and the coastal zone. The organisation, arrangement and landscaping of the parking zone ought to be done in a way that diminishes the impression of a large empty space.

TECHNICAL BLOCK FOR THE NEEDS OF THE COMPLEX MAINTENANCE

Within the Archaeo Park subunit in the zone to which access is provided from the parking lot, it is necessary to envisage a Technical Block for the needs of maintaining the Archaeological Park Complex. The Technical Block will contain garage space intended for parking, maintaining and daily washing of vehicles and machinery, as well as space for the stay of the maintenance employees.

The capacities of the garage space should be dimensioned for the parking of 5 small tractors with mowing accessories, dozer blades and other necessary accessories, one snow machine, 10 trimmers for the maintaining of the greenery (cutting branches, edges, etc.), as well as for the storing of larger tools (compressor, chainsaws) and manual equipment and tools, and 5 dedicated electric vehicles with a capacity of 2 to 4 passenger seats.

Within the area for the stay of the employees, it is necessary to envisage changing rooms, a sanitary block (toilets and showers) and a respite area for 10 maintenance workers, office space for three employees and a kitchenette.

When designing the solution of the Archeo Park subunit, it is necessary to take into account that this subunit, in addition to being intended for the above contents, represents, in the context of the Belo Brdo Archaeological Site Complex, the space within which the primary connections of the Complex are realized - connecting the access zone (parking) with all the contents of the Complex, as well as connecting the access zones with each other (parking - pier). In this sense, it is necessary to provide conditions for comfortable movement for all planned movement options of users of the Complex - pedestrian paths and surfaces, bicycle path (bicycles / segways / scooters), as well as conditions for movement of dedicated electric vehicles and adequate equipment of these communications facilities (lighting, break elements, bicycle parking elements...).

When designing the architectural solution and the ground floor arrangement of the Archeo Park subunit, it is necessary to keep in mind the conditions linked to the flood protection – that the regulation line for high waters, i.e., the flood defence line is at the elevation of 76.50 m above sea level.

The areas of the Archaeological Park subunit should be designed in the way that they form a unique ambient unit of recognisable visual identity, while ensuring transformability.

8.2.5 Programme elements and guidelines for the subunit of the Danube coastal – revetment, promenade (arranged free and coastal areas activated with different contents) and pier

Within the scope of this competition, the Danube coastal subunit with the planned purpose of the revetment, promenade and passenger pier covers the area between the low water regulation line and the boundary of the archaeological site (1st degree of protection), from the confluence of the Bolečica in the south to the boundary of the area covered by the competition in the north.

The graphic presentation of the coverage of the Danube coastal subunit is provided in the tender documentation – I INFORMATION GRAPHIC APPENDICES, appendix BOUNDARY OF THE COMPETITION AREA WITH THE PRESENTATION OF THE SUBUNITS.

The most demanding intervention within this subunit, both in terms of technology and in terms of functional limitation for the other features in the coastal zone is certainly the planned construction / reconstruction of the protective hydro-technical revetment structure.

The construction of hydro-technical structures for the use of waters and protection against waters constitutes a priority in the zone of the Danube coastal, including also the direct coastal segment of the future Archaeological Park. The protective structure (embankment/quay), as a part of urban regulation should be treated in line with the concept of the solution for the development of the riverbank that ought to be adjusted to the needs of cultural heritage while providing conditions for its sporadic or permanent presentation within this subunit as well and with an obligation that the conditions for unhindered access to the water are provided along the entire riverbank. **The crown elevation of 76.50 m a.s.l. has been adopted for the said protective structure.**

The arrangement and use of the coastal, primarily as a public urban space that connects other public spaces with its linear form, constitutes its specificity. It is suggested to develop a network of several smaller public urban areas. Adequate landscaping of the coastal is one of the important factors in achieving direct contact between people and the ambience of the Archaeological Park that has a positive effect on the attractiveness and accessibility while improving the general conditions of pedestrian movement.

The **REVETMENT** should be planned in the zone covered by the competition (including the segment of the coastal foreseen for the poll based design level) in such a way as to ensure its continuity and the continuity of the defence line at prescribed levels of the protection from the relevant high waters along the entire stretch, as well as the communication aimed at facilitating the flood protection and regular maintenance. In the hydro-technical sense, the revetment should be based on the basic principles of construction of the revetment on the territory of the City of Belgrade and on the Danube.

When developing the solution for the regulation zone of the coastal, it is important to bear in mind the following regulation lines:

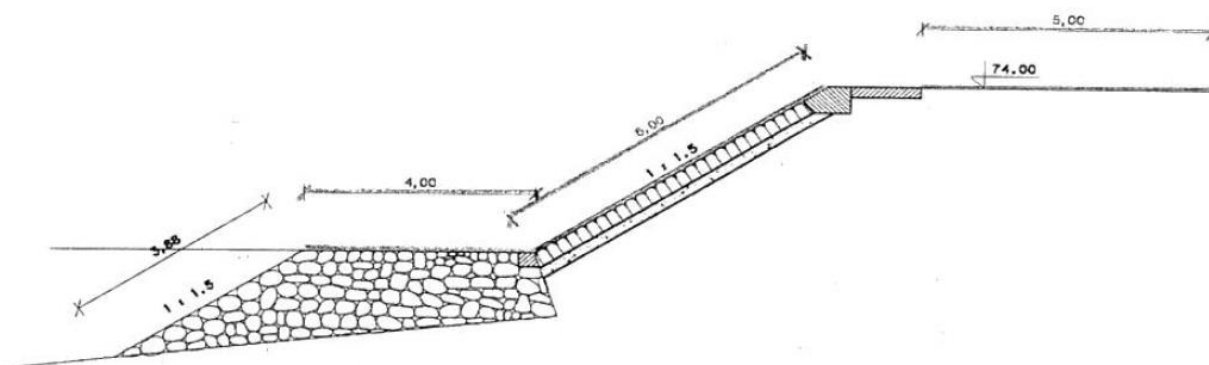
1. basic regulation line (for low waters) that follows the line of the lower parts of the existing banks of the Danube and in terms of the height it defines the outer edge of the stone “foot” crown – the revetment with the elevation of 70.50 m above sea level;
2. regulation line for high waters, i.e., the flood defence line, defines in terms of height the upper plateau of the revetment at the elevation of 76.50 m above sea level. Its position in space is not fixed. The basic hydro-technical requirement is to ensure the continuity of the defence line at the qualified level of flood protection, either by a permanent structure or by a combination of a permanent structure and mobile protection.

In addition to the basic function (protection against high waters, static and filtration stability), the hydro-technical solution for the development of the riverbank must also meet the following requirements:

1. ensuring the continuity of the regulation and the defence lines with the downstream and the upstream sections in conformity with the relevant planning, i.e., hydro-technical solution;
2. ensuring appropriate connection between the higher levels of the riverbank and the river;
3. connection with the planned pier;

The existing revetment, built in the part of the riverbank within the area covered by the competition (in the Archaeological Site zone) with the length of 260 m, the crown elevation of which is at 74.00 m above sea level and is not in compliance with the flood protection conditions (76.50 m above sea level), should be incorporated into the planned solution.

**Слика 1. Типски попречни профил обалоутврде Винча
Десна обала Дунава стационажа км 1144+300 – 1144-850**



51. Graphic image of the type cross-section existing profile of Vinča revetment.

Source: Documentation JVP SRBIJA VODE

The **features of the coastal zone arrangement** entail landscaped, free, green and recreational areas, pedestrian flows and a bicycle path, and they may also include providing conditions for the occasional specific activities related to, e.g., smaller capacity musical, theatrical, artistic and similar events, through adequate infrastructure and multifunctional / transformable landscaping elements.

When designing the solution for the coastal zone, it is necessary to keep in mind the activities on the riverbank and on the river itself, taking into account the climate conditions of the subject area that have a seasonal character, as well as that the Danube potentials can be a part of the diversification of the offer within the scope of various special forms of tourism.

In the coastal zone should be planned a smaller prefabricated object - info point which should provide conditions for ticket sales and distribution of appropriate material that will provide visitors with the necessary information about the tourist area of the Archaeological Park complex. That facility should also serve for the rental and disposal of bicycles, segways and scooters (with a smaller capacity), and should have also sanitary facilities (toilets) for visitors.

The area along the river should be designed in a way that ensures access and safety for all categories of users, the possibility of adequate lighting and maintenance, as well as protection of users that may be required in case of a sudden change weather.

It is necessary that the coastal area is adequately and comfortably connected with the main communications of the Archaeological Park complex – the walking and cycling paths, as well as with the Visitor Centre and the Archaeological Site subunits.

It is also necessary to plan for adequate urban furniture in the coastal area which must mandatorily contain elements for respite (sitting, lying down, communication), elements for parking bicycles / segways / scooters with chargers (with the option to provide energy through a solar station), lighting, trash cans, etc.

The contents of the coastal zone the dimensioning of which is impacted by the user capacity should be dimensioned on the basis of the capacity of 1/3 of the projected total number of concurrent users of the Belo Brdo Archaeological Park complex - 320 users.

Larger existing green areas should be kept and incorporated into the planned solution.

The **PIER for smaller tourist boats and excursion boats**, adapted for receiving and dispatching passengers in the internal traffic system, planned as a pontoon pier (using the existing pontoon from 2020, intended for smaller vessels) with reduced capacity of the necessary supporting facilities – covered access, meeting the requirements for the receiving of vessels and passengers, controls and safety of passengers, adequate connection with the riverbank), while providing for the possibility to include the stop in the network of the public transport of passengers by water.

The existing pontoon, positioned in the coastal zone in the zone of the Archaeological Site (1st degree of protection), is connected to the riverbank by an access bridge that provides access at the elevation of 74.00 m above sea level.

The pier area – the pontoon and the access riverbank must meet the following requirements in relation to pier infrastructure:

- hydro-engineering structures that make up the pier's riverbank, as well as operational and working areas must be properly constructed and they also must be kept in a technically correct condition
- have a pontoon with an access bridge or appropriate crossings for safe movement of people on the vessel-riverbank route
- the pontoon must ensure the acceptance of the envisaged categories of passenger ships, provide conditions for their proper mooring, be adapted for safe connection with vessels with the help of a crossing bridge
- operational riverbank must be secured using a prescribed and functional fence in order to prevent possible falls of passengers into the water
- the surfaces of the pier must be flat, made in such a way as to have a non-slippery surface, without things, goods and vegetation that interfere with movement, with an efficient water drainage system
- direct access to the pontoon and the passenger ship must be fenced off, controlled and with physical or technical security
- access bridge must have the minimum width of 1.5 m in order to allow for the throughput capability for the movement of persons in case of emergency situations when leaving the facility quickly, as well as to be adapted, constructed and equipped to allow the movement of all categories of users including also persons with disability
- pier area must be properly marked, regulated by vertical, horizontal and light signals and well lit
- port area of the pier, including the pier's water area, must be under constant supervision and control for the purpose of security protection
- access to ambulances, police and rescue and fire-fighting services must be provided and passable at all times

Detailed GUIDELINES OF THE PORT GOVERNANCE AGENCY are provided in the tender documentation – III GUIDELINES OF COMPETENT INSTITUTIONS

All of the existing facilities and structures in the coastal zone on the water (except for the pontoon used as a pier for smaller vessels), as well as on the riverbank have been installed without the prescribed permits and are intended to be removed.

The arrangement of the coastal area should be designed in a way that they form a unique ensemble of a recognisable visual identity.

The lines of sight from the promenade along the banks of the Danube towards the river and the Archaeological Park constitute one of the most important qualities of the wider location that need to be preserved and promoted. The lines of sight from the river towards the archaeological site also have an

equal value and they provide for an opportunity to have a complete understanding of the identity of the site's area.

8.2.6 Programme elements and guidelines for the arrangement of the left and right riverbanks of the Bolečica (as a poll based design)

The banks of the Bolečica within the poll based design part of the competition include the area within the regulation of the Bolečica from the confluence with the Danube upstream over the length of around 660.0 m.

Along the left and the right banks of the Bolečica, it is necessary to plan the setting up of a green corridor in order to establish an ecological network at the local level and thus preserve the biodiversity, protect the land from the harmful effects of erosion (water, aeolian) and improve the ambience values of the setting, in accordance with the solution of traffic and infrastructure envisaged by the PDR for the primary facilities of the Boleč Sewerage System - PHASE I.

When planning the arrangement of the banks of the Bolečica, it is necessary to keep in mind that what needs to be done is as follows:

- Preserve the good quality woody vegetation and incorporate it into the planned solution;
- The types of plantings can be individual trees, tree lines, woody-bushy groups, protective belts and continuous massifs;
- Ensure the stratification of the protective green belt by using herbaceous, bushy vegetation ...
- Selected species for the landscaping should correspond to habitat conditions,
- Use deciduous tree species with pronounced sapling strength and dense canopy, but also evergreen and coniferous species in order to achieve functionality in the winter as well,
- Avoid species that have been established as allergens (poplar, etc.), invasive species are prohibited (black locust (*Robinia pseudoacacia*), box elder (*Acer negundo*), tree of heaven (*Ailanthus altissima*), etc.);

The graphic presentation of the new regulation of the Bolečica – the position and the cross-section profile is provided in the tender documentation – IV INSERTS FROM PLANNING DOCUMENTS, appendix, the PDR (Detailed Regulation Plan) for primary facilities of Boleč sewerage system – PHASE I, Regulatory - levelling plan.

8.3 Special programme conditions, guidelines and recommendations for all subunits

8.3.1 Urban-planning and parametric requirements

The urban-planning and parametric requirements related to the planned construction capacities (occupancy, index, floor area ratio, number of floors), as well as the cultural heritage protection conditions, the conditions for green areas, and the engineering and geological conditions for different subunits are listed in conformity with the Spatial Plan for the Special Purpose Area of Belo Brdo Archaeological Site ("The Official Gazette," no. 85/18). This call for tender also defines new goals and features of the Archaeological Park with the Visitor Centre and the Neolithic Scientific and Research Centre that will be the basis for the amendments and supplements to the subject spatial plan.

Urban-planning and parametric requirements for individual units

1. Archaeological Site subunit

a. Archaeological site (1st degree of protection)

Basic purpose of the areas	Structures supporting the archaeological site.
Construction of new buildings and the position of the buildings/structures on the land parcel	It is possible to set up several temporary (pre-fabricated/dismantle) buildings/structures supporting the explorations and presentations of the archaeological site – for the needs of the work and the gathering of researchers, visitor access and movement, and protection and presentation of the archaeological remains, with the possibility of phased setting up

	<p>(assembly/dismantling) of the buildings/structures.</p> <p>The number, purpose, capacity and position of the buildings/structures are conditioned by the activities of the future archaeological explorations and the programmes for their presentation.</p> <p>This area may be used only for the purpose of explorations, presentation and protection of the archaeological site. It is not permitted to build any features that are not a part of the explorations and presentation of the archaeological site in this area.</p>
Cultural heritage protection	<p>According to the Decision on establishing Belo Brdo in Vinča site as an archaeological site, the subject area is an archaeological site that enjoys the 1st degree of protection.</p> <p>Belo Brdo Archaeological Site in Vinča is immovable cultural property of national and international importance, and it enjoys the status of a cultural property of exceptional importance for the Republic of Serbia.</p> <p>Any construction of new buildings/structures is prohibited, except for the buildings/structures that support the explorations, protection and presentation of the site, the rehabilitation of the terrain and the construction of infrastructure.</p> <p>It is allowed to build temporary aboveground infrastructure over the archaeological site, as well as buildings/structures and facilities that support the presentation of the archaeological site. With their size, volume and exterior design, the newly-built structures must not compete with the area of the archaeological site.</p> <p>Changing the form of the terrain is allowed only when this supports the explorations, protection and presentation of the archaeological site.</p>
Floor area ratio	<p>The floor area ratio is conditioned by the activities of the future archaeological explorations and the programmes for their presentation.</p>
Height of the structure	<p>The maximum number of floors is ground floor (P). It is prohibited to build any underground floors.</p>
Requirements for free and green areas	<p>It is necessary preserve good quality wooden vegetation, durably or up to the moment of the planned systematic excavations for the purpose of explorations, when it will be permitted to remove the existing trees.</p> <p>It is not permitted to plant new wooden trees or bushy species the roots of which develop into depth of more than 30 cm.</p> <p>The planting of wooden species (forestation, greenery, orchards) is permitted solely in the area that has been archaeologically explored to the full extent.</p> <p>In the area of the active landslide it is necessary to retain the existing vegetation up to the moment when the landslide has been rehabilitated and after that the area should be landscaped using the species and in the manner as prescribed in the landslide rehabilitation project.</p> <p>The autochthonous species should be used; the species that have been established as allergens (poplar, etc.) should be avoided; the use of invasive species (black locust, box elder, tree of heaven, etc.) is prohibited.</p>
Requirements for vehicle and pedestrian access	<p>It is necessary to provide adequate pedestrian access, access for purpose-made electric vehicles, bicycle / segway / scooter, in line with the purposes and capacities, as well as functional connectivity with the direct and broader contact zone.</p> <p>Providing access to motor vehicles is linked solely to the needs of the archaeological site and emergency vehicles.</p>

Architectural design	The designing of temporary, pre-fabricated/easy to dismantle and mobile buildings/structures and elements that support the explorations, presentation and protection of the archaeological site should be done in the way that ensures a high level in the treatment of the cultural heritage protection and the promotion of contemporary tendencies in architecture.
-----------------------------	--

b. Protected surroundings of the archaeological site

Basic purpose of the areas	The protective green belt in the area covering the surroundings of the archaeological park / Buildings/structures supporting the archaeological site
Construction of new buildings and the position of the buildings/structures on the land parcel	It is possible to construct one or more, prefabricated/dismantle, structures/building solely for the purpose of supporting the archaeological site (Triage Centre) with the possibility of phased construction and multiplication. On land parcels 1994/1, 1994/2, 1995/1, 1995/3, 1995/4, 1996/1, 1999/1, 1999/2 and 2000 or land parcels 2011/1, 2011/2, 2011/3 and 2012. The area may be used only for the purpose of supporting the archaeological site. It is not permitted to construct any features that do not support the explorations/ presentation of the archaeological site in this area.
Cultural heritage protection	According to the Decision on establishing Belo Brdo site in Vinča as an archaeological site, which expanded the protection zone and the protected surroundings, the subject area is located in the zone of the Protected Surroundings of the archaeological site within the scope of the 2 nd degree of protection. Belo Brdo Archaeological Site in Vinča je immovable cultural property of national and international importance, it enjoys the status of a cultural property of exceptional importance for the Republic of Serbia. Any construction of new buildings is prohibited, except for the buildings/structures supporting the explorations, protection and presentation of the site, the terrain rehabilitation and the construction of infrastructure. With their size, volume and exterior design, the newly-built structures must not compete with the area of the archaeological site. Until the implementation of the planned purposes, it is possible to conduct rehabilitation, and servicing and maintenance on the existing buildings/structures.
Floor area ratio	The maximum FAR occupancy index of the site (group of cadastral parcels) planned for construction is "Z" = 10%.
Height of the structure	The maximum number of floors is ground floor (P). It is prohibited to build any underground floors.
Requirements for the green areas	It is necessary to preserve good quality wooden vegetation, durably or up to the moment of the planned systematic excavations for the purpose of explorations, when it will be permitted to remove the existing trees. It is not permitted to plant new wooden trees, or bushy species the roots of which develop into depth of more than 30 cm. The planting of wooden species (forestation, greenery, orchards) is permitted in the area that has been archaeologically explored to the full extent. The autochthonous species should be used; the species that have been established as allergens (poplar, etc.) should be avoided; the use of invasive species (black locust, box elder, tree of heaven, etc.) is not allowed. It is not allowed to change the form of the terrain, except in the manner that entails the setting up of pedestrian paths and features by surpassing the

	existing terrain (by filling the terrain).
Requirements for vehicle and pedestrian access	<p>It is necessary to provide adequate pedestrian access, access for purpose-made electric vehicles, bicycle / segway / scooter, in line with the purposes and capacities, as well as functional connectivity with the direct and broader contact zone.</p> <p>Providing access to motor vehicles is linked solely to the needs of the archaeological site and emergency vehicles.</p>
Architectural design	The designing of temporary, pre-fabricated/easy to dismantle and mobile buildings/structures and elements that support the explorations, presentation and protection of the archaeological site should be done in the way that ensures a high level in the treatment of the cultural heritage protection and the promotion of contemporary tendencies in architecture.

2. Visitor Centre

Basic purpose of the areas	Public services features: culture, education, etc., in support of the archaeological site / the protective green belt in the areas of the archaeological site's surroundings
Purpose compatibility	Compatible purposes are commercial features
Number of buildings/structures	It is permitted to construct one or a complex of interconnected buildings/structures within the zone earmarked for the construction which includes land parcels 2028/14, 2028/15, 2028/47, 2028/48, 2028/77, 2028/120.
Construction of new buildings and the position of the buildings/structures on the land parcel	<p>The building should be positioned within the construction zone defined by construction lines. It is not mandatory to position the buildings/structures or parts of the buildings/structures onto the construction line, but rather in the space defined by the construction lines.</p> <p>By its position within the land parcel, the building must be free-standing.</p>
Floor area ratio	The maximum FAR for the zone earmarked for construction is "Z" = 60%.
Height of the structure	P+1+PK/Ps
Elevation of the ground floor	The elevation of the ground floor of the building - 76.50 m a.s.l., in line with the flood protection requirements.
Requirements for free and green areas	<p>Public services features (the zone of the Visitor Centre and the exterior areas supporting the Centre)</p> <p>A minimum of 20% of the total surface area should be provided for green areas in direct contact with the ground.</p> <p>The free areas of the parcel should be developed at the ground-floor level and landscaped in line with the purpose and the concept of the architectural solution.</p> <p>The existing good quality vegetation should be protected and preserved.</p> <p>The protective green belt in the area covered by the surroundings of the archaeological park (the zone of the exterior areas supporting the Visitor Centre)</p> <p>It is necessary to preserve the good quality wooden vegetation.</p> <p>It is not permitted to plant new wooden trees, or bushy species the roots of which develop into depth of more than 30 cm.</p> <p>The planting of wooden species (forestation, greenery, orchards) is permitted in the area that has been archaeologically explored to the full extent.</p>

	<p>The autochthonous species should be used; the species that have been established as allergens (poplar, etc.) should be avoided; the use of invasive species (black locust, box elder, tree of heaven, etc.) is not allowed.</p> <p>It is not allowed to change the form of the terrain, except in the manner that entails the setting up of pedestrian paths and features by surpassing the existing terrain (by filling the terrain).</p>
Traffic/parking solution	<p>It is necessary to provide adequate pedestrian access, access for purpose-made electric vehicles, bicycle / segway / scooter, in line with the purposes and capacities, as well as functional connectivity with the direct and broader contact zone.</p> <p>Providing access to motor vehicles is linked solely to the needs of the archaeological site and emergency vehicles.</p> <p>The parking of motor vehicles of all users of the Belo Brdo Archaeological Park complex is foreseen within the scope of the Main Parking Lot of the complex.</p> <p>The parameters and the requirements for the traffic surfaces and parking are provided in section 8.3.2 of the competition's programme.</p>
Architectural design	<p>The character of the architectural design is in the spirit and with characteristics of contemporary architecture, affirmative with respect to the potentials and the context of the location and with characteristics that contribute to the representativeness and recognisability of the ensemble in the forming of which it takes part, both at the micro and at the macro levels.</p>
Engineering and geological conditions	<p>The space foreseen for the Visitor Centre subunit has been assessed as conditionally suitable for urban-planning.</p> <p>The level of the groundwater is at the depth of less than 2.0 m, in relation to the level of the existing terrain. During the construction and use, it is necessary to foresee a measure for the alleviation of the groundwater impact by controlled drainage.</p>

3. Neolithic Scientific Research Centre

Basic purpose of the areas	Cultural/artistic/educational features
Purpose compatibility	Compatible purposes are commercial features of up to 49%
Number of buildings/structures	It is permitted to construct one or a complex of interconnected buildings/structures
Construction of new buildings and the position of the buildings/structures on the land parcel	<p>The buildings/structures should be positioned within the construction zone, defined by construction lines. It is not mandatory to position the buildings/structures or parts of the buildings/structures onto the construction line, but rather in the space defined by the construction lines.</p> <p>By its position within the land parcel, the building must be free-standing.</p>
Floor area ratio	The maximum FAR on the parcel is "Z" = 60%.
Height of the structure	P+1+Pk/Ps.
Elevation of the ground floor	The elevation of the ground floor may be maximally 0.2 m higher than the zero elevation
Requirements for free and green areas	<p>Ensure a minimum of 20% of the total parcel surface area for green areas in the direct contact with the ground.</p> <p>The free areas of the parcel should be developed at the ground-floor level and</p>

	<p>landscaped in line with the purpose and the concept of the architectural solution.</p> <p>The existing good quality vegetation should be protected and preserved.</p>
Traffic/parking solution	<p>It is necessary to provide adequate pedestrian access and vehicle access, as well as access for purpose-made electric vehicles, bicycles / segways / scooters, in line with the purposes and capacities, as well as functional connectivity with the direct and broader contact zone.</p> <p>The parking of motor vehicles of all the users of the Neolithic Scientific and Research Centre has been foreseen within the scope of the Main Parking Lot of the complex.</p> <p>The parameters and the requirements for the traffic surfaces and parking are provided in section 8.3.2 of the competition's programme.</p>
Architectural design	<p>The character of the architectural design is in the spirit and with characteristics of contemporary architecture, affirmative with respect to the potentials and the context of the location and with characteristics that contribute to the representativeness and recognisability of the ensemble in the forming of which it takes part, both at the micro and at the macro levels.</p>
Engineering and geological conditions	<p>The space foreseen for the Neolithic Scientific Research Centre subunit has been assessed as conditionally suitable for urban-planning – it is stable under the natural conditions, while urban development entails full respect for certain conditions and recommendations.</p> <p>In these parts of the terrain the groundwater aquifer is formed almost at the surface of the terrain at the depth of 1.0–1.5 m or it saturates the terrain up to the surface where local seasonal puddle patches are formed. During the construction and use, it is necessary to foresee a measure for the alleviation of the groundwater impact by controlled drainage.</p>

4. Archaeo Park

Basic purpose of the areas	Features of the Archaeo park / Parking space / Protective and other greenery
Construction of new buildings and the position of the buildings/structures on the land parcel	<p>It is permitted to construct features in support of the archaeo park – theme structures – a display for the presentation of life in the Neolithic, movable / pre-fabricated / temporary structures in line with the foreseen purposes, a parking lot and the foreseen structures within the parking lot, a building/structure used for the purpose of maintaining the complex and features intended for the stay outdoors within the green areas.</p>
Height of the structure	The maximum number of floors is ground floor (P).
Requirements for free and green areas	<p>It is necessary ensure a minimum of 60% of green areas in direct contact with the ground.</p> <p>Good quality wooden vegetation should be preserved and incorporated into the planned solution.</p> <p>The types of plantings can be individual (solitary) trees, tree lines, woody-bushy groups, protective belts and continuous massifs. Within the green corridors and for the purpose of protecting different areas and activities, it is also possible to set up green belts in order to ensure the stratification of the greenery by using herbaceous, bushy and woody vegetation. It is important to use deciduous tree species with pronounced sapling strength and dense canopy, as well as evergreen and coniferous species in order to achieve functionality during winter as well. The species that have been established as allergens (poplar, etc.) should be avoided; the use of invasive species (black locust, box elder, tree of heaven,</p>

	<p>etc.) is prohibited.</p> <p>Potential species to be cultivated at “The Agriculture Museum / Botanical Garden” are grain species: wheat (<i>Triticum monococcum</i> and <i>Triticum dicoccum</i>), common wheat (<i>Triticum aestivum</i>), barley (<i>Hordeum vulgare</i>), millet (<i>Panicum miliaceum</i>); pulses: lentils (<i>Lens culinaris</i>), peas (<i>Pisum sativum</i>), ervil (<i>Vicia ervilia</i>),...; oil plants: linseed (<i>Linum usitatissimum</i>); wild (foraged) species: danewort (<i>Sambucus ebulus</i>), elder (<i>Sambucus nigra</i>), Cornelian cherry (<i>Cornus mas</i>), blackberry (<i>Rubus fruticosus</i>), pear (<i>Pyrus sp.</i>), wild grape (<i>Vitis vinifera ssp. sylvestris</i>), oak (<i>Quercus sp.</i>), water chestnut (<i>Trapa natans</i>); as well as possible medicinal herbs and spices: bladder cherry (<i>Physalis alkekengi</i>), mallows (Malvaceae), etc.;</p> <p>The furnishing should be provided in line with the concept of the solution for the respite furniture, lighting, waste baskets.</p>
Parking	<p>The parking lot should be envisaged for the needs of parking motor vehicles of all categories of users of the Belo Brdo Archaeological Park complex, as well as for buses/coaches, special and emergency vehicles.</p> <p>The parking lot should be positioned in the zone of the direct traffic access from the public traffic area, in line with the criteria and capacities provided in section 8.2.4. of the competition programme.</p> <p>The vehicle access routes to the parking lot (entrances / exits) should be positioned and planned in terms of the capacity in the way that they provide unhindered flow. The organisation, development and landscaping of the parking zone should be planned so that there is a reduced impression of a large empty space.</p> <p>The parameters and the requirements for the traffic surfaces and parking are provided in section 8.3.2 of the competition’s programme.</p>
Requirements for vehicle and pedestrian communications	<p>It is necessary to form pedestrian and bicycle paths that are organised independently one from the other;</p> <p>The pedestrian access and flows should be planned as a part of the complex’s pedestrian flow system, in the way that they provide conditions for the movement of all user categories, as well as functional connectivity with the direct and broader contact zone.</p> <p>The width of the planned two-way bicycle path should be a minimum of 2.2m. The minimal free profile of the bicycle paths is at the height of 2.5m along the entire surface of the paths. The plans should provide for a parking lot for bicycles / segways / scooters in the zone with attractions.</p> <p>The parameters and the requirements for the traffic surfaces and parking are provided in section 8.3.2 of the competition’s programme.</p>

5. Development of the Danube coastal

Basic purpose of the areas	Public area – revetment, promenade with a bicycle path and a passenger pier
Purpose compatibility	Areas for rest, recreation and activities out in the open (public use)
Revetment construction	<p>Provide for the continuity of the revetment and the defence line at the prescribed elevations against the relevant high waters along the entire area.</p> <p>The upper plateau of the revetment is defined in terms of the height with the regulation line for the high waters, i.e., with the flood defence line at the level of 76.50 m a.s.l.</p>
Ground level architectural elements	Ground level – landscaping, free, pedestrian, bicycle paths, furnishing, etc.

Requirements for vehicle and pedestrian communications	<p>It is necessary to provide adequate pedestrian access and access for purpose-made electric vehicles, bicycles / segways / scooters, in line with the purposes and capacities, as well as functional connectivity with the direct and broader contact zone.</p> <p>Providing access to motor vehicles is linked to the needs of the archaeological site, supplying and emergency vehicles.</p> <p>The parking of motor vehicles of all users of the Belo Brdo Archaeological Park complex is foreseen within the scope of the Main Parking Lot of the complex.</p> <p>The pedestrian access, connections and paths should be planned as a part of the complex's pedestrian flow system, in the way that they provide conditions for the movement of all user categories.</p> <p>The width of the planned two-way bicycle path should be a minimum of 2.2m. The minimal free profile of the bicycle paths is at the height of 2.5m along the entire surface of the paths. The plans should provide for a parking lot for bicycles / segways / scooters in the zone with attractions.</p> <p>The parameters and the requirements for the traffic surfaces and parking are provided in section 8.3.2 of the competition's programme.</p>
Requirements for free and green areas	<p>It is necessary to ensure as a minimum that 60% of the area are under vegetation (landscaped) in direct contact with the ground (with no underground structures), while the remaining maximum 40% may be under paths (pedestrian and bicycle ones), plateaus, playgrounds and open terrains.</p> <p>The existing vegetation should be kept and rejuvenated.</p> <p>It is necessary to use autochthonous species adjustable to the climate and pedological conditions.</p>
Buildings/structures	<p>It is not permitted to have construction of new buildings, except for a pre-fabricated structure serving as an info-centre. All temporary structures are to be removed.</p>

6. Arrangement of the left bank of the Bolečica

Basic purpose of the areas	Green areas
Features / structures	Green and walking areas. No construction of new buildings is allowed.
Requirements for free and green areas	<p>All the planned features under solid curtains, together, must not take up more than 2% of the total surface area;</p> <p>Good quality wooden vegetation should be preserved and incorporated into the planned solution.</p> <p>The types of plantings can be individual trees, tree lines, woody-bushy groups, protective belts and continuous massifs.</p> <p>It is important to ensure the stratification of the protective green belt by using herbaceous, bushy vegetation.</p> <p>The species selected for the landscaping should correspond to the habitat conditions.</p> <p>Deciduous tree species with pronounced sapling strength and dense canopy should be used, as well as evergreen and coniferous species in order to achieve functionality in the winter as well.</p> <p>The species that have been established as allergens (poplar, etc.) should be avoided, while invasive species are prohibited (black locust, box elder, tree of heaven, etc.);</p>

8.3.2 Guidelines and recommendations for traffic areas, stationary and pedestrian traffic

Traffic network

The width of the road for motor vehicles should be planned in relation to the expected vehicles that will move on it, but not narrower than 6.0 m for two-way movement of vehicles or 3.5 m for one-way movement of vehicles, taking into account the obligation to allow unhindered passage and turning of emergency vehicles.

The vehicle accesses to the facilities should be dimensioned depending on the width of the street from which they are approached and the relevant vehicle (passenger, delivery / cargo, utility / fire-fighting), so that the conditions of its passability are met in the way that the vehicle can enter and exit the land parcel by going forward.

If a system for controlling access to the land parcels is envisaged, it must be positioned in the way that the waiting area is provided on the pertaining parcel, so that the waiting vehicle does not interfere with the flow of traffic on the surrounding street network.

Parking

The minimum width of the road that accesses the parking lots for passenger vehicles is 6.0 m. The minimum dimension of the parking spot for buses/coaches is 12.0 m x 3.0 m, while the minimum dimension of the parking spot for passenger vehicles is 5.0 m x 2.3 m for perpendicular parking. The road curtain of the access roads to the parking lots and of the parking lots should be done in line with the environment in which they are located and the load-bearing capacity for the passage of the expected vehicles.

Recommendation of the Secretariat for Traffic: perpendicular parking / garage spots should be designed with dimensions of no less than 2.5m x 5.0m, while the manoeuvring space should have the minimum width of 6.0m; parallel parking spaces should be designed with dimensions of no less than 2.0m x 5.5m and the manoeuvring space of the minimum width of 3.5m.

In public car parks, at least 5% of the parking spots should be provided for passenger vehicles of persons with disabilities / reduced mobility and at least one spot with the prescribed dimension (for the dimensions not less than 3.7m x 4.8m for perpendicular PS or 5.9m x 5.0m for double perpendicular PS).

The necessary number of parking spots is determined on the basis of the norms:

- (1) cultural institutions: 1 PS per 60 m² of the GFA
- (2) shops: 1PS per 50 m² of selling area containing consumer goods
- (3) administration / business: 1 PS per 60 m² of the NFA of the administration or business premises
- (4) catering: 1 PS per two set tables with four chairs of the restaurant/cafe, etc.
- (5) hotels: 1 PS per 2-10 beds, depending on the category.

Pedestrian areas

The areas for pedestrian movement should be planned with the minimum width of 1.5 m (recommended 2.0 m) connected to the pavement of the surrounding street network.

The access to buildings/structures, as well as all other areas both inside and outside the building, earmarked for pedestrian communication should be planned so that they are accessible to all categories of users, in line with accessibility standards for unhindered movement and access for people with disabilities, children and the elderly. Persons with special needs should have an access provided to the ground floor via external or internal ramps.

Bicycle paths

The bicycle paths should be planned so as to ensure the continuity of routes in relation to the contact area. They should be planned with the minimum width of 1.1 m for one-way traffic or 2.2 m for two-way traffic, with the minimum distance from the outer edge of the road of 0.75 m and a free profile of 2.5 m.

8.3.3 Guidelines and recommendations in relation to the engineering and geological conditions

AREA IVA5 – includes terrains that are extremely unfavourable for urban development. The engineering and geological characteristics of these terrains under natural conditions constitute an extremely limiting factor. This area includes terrains with occurrence of active landslides. The basis of the terrain consists of a

Miocene complex, over which there are precipitated Quaternary deluvial and modern sediments. The landslides affect the Quaternary cover and the zone of physical and chemical alteration of the marly-clayey complex, as well as a part of the archaeological site. The estimated or established depth of sliding is from 5 to over 10 m, depending on the degree of degradation and the depth of the physical and chemical alteration of the rock mass in the base. The groundwater levels are located at different depths, often from the surface of the terrain, when the waters from the colluvial mass flow out diffusely forming puddles, to the depth of 6-7 m locally. Different levels of groundwater suggest the appearance of “wandering waters” the movement of which through the sliding mass is conditioned by the degree of separation, cracking and looseness of the rock masses.

It is recommended that the largest sections within this area are used as arable, green and recreational zones with the maintenance of protective and remedial greenery while applying certain rehabilitation measures. If parts of the terrain in this area must be put up for urban development, it will be necessary to take a closer look at the technical and economic conditions for the construction of facilities through a special process of research and design. Extensive and complex rehabilitation measures need to be taken into account for the construction both of buildings and all line structures, traffic lines and infrastructural network. All terrain cuts can cause reactivation and further intensification of landslides. By applying appropriate measures for the protection of slopes, by filling the terrain, construction of drainage elements, receiving earth pressures with supporting structures, diaphragms and piles, it is possible to rehabilitate the landslides and only after that the area can be used for urban development. It is possible to construct buildings/structures of minor importance while conducting a careful analysis of the landscaping and planning of all earthworks during the construction.

Belo Brdo archaeological site is also affected by active landslide processes. According to the information of the local population, the subject landslide set off even before WWII. During that period, the Danube had a direct destructive effect on the subject location. The process of river erosion and suffusion, as well as the anthropogenic impact, have played the most important role in the formation of this landslide. Under the current conditions, the landslide has all the morphological elements of a landslide except for the foot which is eroded and now the end of the landslide is in the shape of a vertical section, as well as the rest of the subject location.

In the tender documentation: 1 INFORMATION GRAPHIC APPENDICES, there is an enclosed Engineering and Geological Map of the terrain from spatial plan for the special purpose area archaeological site Belo Brdo

8.3.4 Guidelines and recommendations for the treatment of the installations and the equipment at the site

In all the facilities, it is necessary to provide for all standard rooms and installations linked to heating, ventilation, water supply and electrical installations required by this type of facilities, in line with the regulations on technical safety, fire protection and environmental protection. From the aspect of infrastructural equipment, it is possible to provide connections to the utility infrastructure (electricity, telecommunication, water supply, sewerage and gas supply networks) for the subject features in the required capacity. When preparing the competition design, please bear in mind that it is necessary that the level of equipment follows the local standards and typology in all segments of the area covered by the competition.

9 CRITERIA FOR THE ASSESSMENT OF THE ENTRIES

Along with complying and fulfilling the requirements from the programme and the competition task, and conformity of the solution for the competition with specified urban development conditions and recommendations, the Jury will evaluate the submitted designs based on the following general criteria:

- Quality of the solution in terms of characteristics and the significance of the intended use;
- Character and quality of urban identity improvement in the context of immediate and wider environment;
- Clear spatial concept, recognizable for its main idea;

- Spatial distribution of intended use and contents, functionality and integrity of the proposed solution;
- Urban-architectural, landscaping and ambient characteristics of the solution for the entire unit and subunits of its parts;
- Relation with the context, architectural and cultural heritage;
- Programme and economic feasibility of the proposed solution;
- Cost-effectiveness of the solution in terms of implementation and exploitation;
- Approach in accordance with sustainability principles (sustainability of the solution in terms of ecology and energy, preservation and improvement of the environmental quality);
- Viability of the solution in accordance with the Competition terms;
- Credibility of arguments – clear presentation through graphic attachments.

10 COMPETITION RULES

10.1 Competition eligibility criteria

Pursuant to Article 28 of the *Rulebook on the method and procedure for the announcement and implementation of urban and architectural competitions* ("Official Gazette of the Republic of Serbia", number 31/2015), any natural persons with acquired higher education (university degree) in the field of architecture is entitled to participate in the competition, regardless of their territorial affiliation and personal characteristics, i.e. legal entities that have appointed a person with acquired higher education in the field of architecture.

Participants in the competition may include in their teams, at their own discretion, experts from other professions who may contribute with their professional opinions and knowledge to improvement of competition solutions, as well as students. A participant in the competition may not be a person who is directly engaged in preparation and conducting of Competition, or is relative or directly cooperates with such person, nor it can be person who is member of management or is employed with the institution who announced this Competition.

Mandatory conditions for participation at the competition:

- Competition design must be submitted in timely manner and in a way stipulated by the Competition Announcement.
- Competition design must follow all the requirements of technical and layout formatting and must contain all parts determined by the Competition Announcement.

10.2 Terms for conducting the competition

The competition is announced in accordance with *the Rulebook on the manner and method of opening up and conduction of the urbanistic and architectural competition* ("Official Gazette of RS" No. 31/2015).

Each competitor who has taken the tender documents is granted the right to take part in competition.

By submitting an entry to competition, each participant accepts the propositions of this competition.

10.3 Contents of the competition assignment

Participants are required to submit the competition design in electronic form, and detailed instructions for naming documents and how to mark competition entries are given in Chapter 10.4. All files are submitted in *pdf* format.

The content of the competition design includes:

1. Volume with textual explanation and reduced graphic attachments
2. 2D and 3D Graphic attachments
3. 3D animation
4. Material for electronic exhibition

Competition design and all accompanying enclosures must be prepared in English or Serbian language.

All participants are required to submit the following documents as part of the competition assignment:

1. Volume with textual explanation and reduced graphic attachments

The Volume shall be submitted in PDF format. Dimensions of the Volume should be 42x29.7 cm (A3 format) of horizontally oriented (landscape) pages. Reduced graphics in 150 PPI resolution.

Volume contents

- Description and explanation of the solution.
The justification should be clearly structured, in accordance with the objectives of the competition and the obligations, guidelines and recommendations given in the Competition Task.
- All graphic attachments reduced to A3 format.
- Tabular presentation - Balance of achieved capacities with recapitulation of areas by subunits (according to *Table 1 given in the Competition Documentation*).
- Tabular presentation - Achieved urban parameters by subunits (*according to Table 2 given in the Competition Documentation*).

2. Graphic attachments (2D and 3D)

- **Complex of the Archaeological Park Belo brdo - spatial-programme solution**

- Technical plan - layout presentation of the spatial arrangement of the concept, their positional and dimensional characteristics, number of floors of built structures, functional relations, traffic and leveling solution, pedestrian and other types of movement, presentation of options for planned movement of visitors during the visit to the Complex (pedestrian and bicycle / segway / scooter)
P=1:1500

- Composition plan - layout presentation of planned construction and arrangement (plan of masses with their cast shadows) and solutions of the ground floor with the basic characteristics of the ground floor and landscape arrangement
P=1:1500

- 3D presentations of the Belo Brdo Archaeological Park Complex from the given directions and at the choice of competitors

(Orientative position of the required directions is given in the Competition Documentation - I INFORMATIVE GRAPHIC ATTACHMENTS, Attachment *BOUNDARIES OF THE COMPETITION AREA WITH POSITIONS OF DEFINED DIRECTIONS*)

Indicated attachments include survey segments of the competition and imply the presentation in context of direct surrounding area.

- **Archaeological Site Subunit**

- Layout plan of the Archaeological site subunit with an overview of the organization, floor and landscape arrangement of the Protected surroundings of the archaeological site and an illustrative presentation of the optional organization of the Archaeological site (I degree of protection) using the planned prefabricated facilities.
P=1:500

- Prefabricated facilities and elements for the needs of: work and gatherings of researchers / access and movements of visitors / protection and presentation of archaeological remains
 - bases, sections, layouts (in adequate scale), connection and grouping schemes,
 - 3D view (optional)

- Triage Centre

- layout plan of the roof, ground floor base with the floor, cross sections, all appearances
P=1:250

- 3D presentations of the Archaeological site subunit (minimum 2, one of which is from the river direction)
- **Visitor center subunit with associated external area**
 - layout of the roof with regulation and leveling elements P=1:250
 - layout of the ground floor with ground floor and landscape design P=1:250
 - bases (all) P=1:250
 - cross-sections (characteristic) P=1:250
 - aspects (all) P=1:250
- 3D presentations of the subunit Visitor Centre building (minimum 2, one of which is from the river direction)
- **Neolithic Research Center subunit with associated external area**
 - layout of the roof with regulation and leveling elements P=1:250
 - layout of the ground floor with ground floor and landscape design P=1:250
 - bases (all) P=1:250
 - cross-sections (characteristic) P=1:250
 - aspects (all) P=1:250
- 3D presentations of the subunit and the building of Neolithic Research Centre (minimum 2 presentations)
- **Archaeological Park Subunit and the main parking lot of the Complex with accompanying contents**
 - Layout plan of the Archeo Park subunit with an overview of the planned construction and content of open spaces, leveling, traffic areas and communications, ground and landscape arrangements and an illustrative presentation of the optional organization of spaces intended for thematic contents
P=1:500
 - The main parking lot of the Complex with the envisaged facilities and the Technical Block for the maintenance of the complex
 - layout plan of the ground floor (traffic solution with the immediate environment and connections with the public traffic area, ground floor and landscape arrangement)
P=1:250
 - layout plan of the roof, foundations, sections and appearances of the planned building
P=1:250
 - Presentation of solutions of characteristic segments according to categories of content / ambient units, Archaeological Park subunit
 - bases, sections, layouts (in adequate scale), 3D view
 - 3D views of Archaeological Park subunit and main parking of the Complex (minimum 2 views)
- **Subunit of the Danube river bank in the area of the Belo Brdo Archaeological Park**
 - Layout plan of the Danube river bank subunit with the presentation of planned contents, leveling, traffic areas and communications, floor and landscape arrangement, in the context of the immediate environment and appearance of the subunit with the immediate hinterland "from the water" P=1:500
 - Presentation of solutions of characteristic segments / ambient units
 - bases, cross sections, layouts (in adequate scale), 3D view
 - Presentation of characteristic details of the technical and design solution of the bank revetment
 - bases, cross sections (transverse profile), in adequate proportions
 - 3D views of the Danube river bank subunit in the area of the Belo Brdo Archaeological Park (minimum 2, one of which is from the river direction)

- **Elements of street furniture and ground floor arrangement**
 - bases, cross sections, layouts (in adequate scale), 3D view
- **Subject of the competition at the survey level**

For the subject segments of space that are the subject of the competition at the survey level, in addition to presenting the solutions given within the Spatial and Programme Solution of the Belo Brdo Archaeological Park Complex (Technical Plan and Composition Plan) provide chosen attachments that affirm the quality of proposed solutions and the ambient values of the spaces themselves, as well as in the context of their importance as the immediate surroundings of the Belo Brdo Archaeological Park Complex.

Graphic attachments should be submitted as files in .pdf format measuring 100x70cm (format B1), horizontally oriented (landscape), in a resolution of 150 PPI.

3. 3D animation

3D animation - presentation of the conceptual design - conceptual design of the space of the Archaeological Park Belo Brdo Complex in Vinča lasting up to 60 seconds, mp4 format, resolution: 1080p / 720p

4. Material for electronic exhibition

Posters in .jpg format, a total of 7 attachments, 2000px wide and 1200px high - horizontally oriented in the RGB system, in a resolution of 150 PPI. These attachments shall also be anonymous with a unique code, defined in Chapter 10.4., which should be indicated in each attachment.

All above elements and attachments to the competition elaborate, textual and graphic attachments with described content, represent mandatory parts of competition design. The works that do not contain the above described and required elements and attachments shall not be taken into consideration. In addition to the above, it is possible to attach additional graphic attachments, at the participants' choice.

10.4 Method of technical and design processing of the competition assignment

All graphic attachments, each sheet in the volume and posters should be marked with a unique code in the upper right corner of each sheet (Arial font, Bold, size 50pt for graphic attachments, or 24pt for the volume). The unique code must consist of two Latin script letters and five Arabic numerals, selected by the author. The sheets should be numerated with an ordinal number in the lower right corner. The font of the texts in the volume is Arial, size 11pt.

The language of the competition is English or Serbian.

SUBMISSION OF COMPETITION DESIGN

All material (except 3D animation) should be submitted in one compressed (zipped) folder, not bigger than 150 MB, named by the chosen unique code of two Latin letters and five Arabic numerals (eg.: AB12345.zip). 3D animation is delivered in one compressed (zipped) folder, not bigger than 150 MB, named with the selected unique code with the addition of the word animation in the continuation of the name (e.g.: AB12345_animation.zip).

The compressed (*zipped*) folder not bigger than 150 MB that contains the entire material (save for 3D animation) should contain:

- Volume with textual explanation and reduced graphic attachments in .pdf format, dimensions 42x29.7cm (A3), defined in Chapter 10.3 paragraph 1.
- Graphic attachments, defined in chapter 10.3. under 2., in .pdf format.

- Material for electronic exhibition, defined in chapter 10.3. paragraph 4, in .jpg format

The compressed (*zipped*) folder not bigger than 150 MB that contains only the 3D animation should contain:

- 3D animation lasting up to 60 seconds, mp4 extension, resolution: 1080p / 720p

The participant in the competition submits the competition design electronically via the link: <https://vinca.konkurs.rs/>

The final deadline for submitting competition designs is **August 08, 2022** until 15:00 (GMT +1).

The competition design which is not received by the announcer within determined deadline, i.e. received after the expiry of date and hour determined for submitting designs, shall be deemed as untimely submitted and will not be taken into consideration. Each participant is allowed to submit only one competition design without variant solutions. After the deadline for submission of competition designs, the participant in the competition cannot withdraw or change the competition design.

The technical design of the competition study according to the above description, requirements and dimensions is the mandatory content of the competition design. The works that do not contain the above described and required elements and attachments shall not be taken into consideration.

10.5 The author's envelope - Contents of the competitors' statement

Along with the electronic submission of the competition design, the participant is obliged to send by mail a sealed non-transparent envelope marked "AUTHOR" and marked on the back with the selected work code of two letters in Latin script and five Arabic numerals, font Arial, Bold, 24pt. The envelope should be sent to the following address: **Union of Architects of Serbia, Kneza Miloša 7/III, 11000 Belgrade, Serbia**. The envelope should contain:

- Text document in A4 format containing:
 - Selected code of two Latin letters and five Arabic numerals used;
 - Name(s) of author(s) with signatures;
 - Declaration of acceptance of the terms of the competition;
 - Name and surname of the person authorized for representing (may or may not be one of the authors);
 - E-mail address and contact phone;
 - Statement in which the author or team of authors declare whether they want their project to be publicly exhibited under the code (anonymously) or under the author's name.
 - Statement in which the author or team of authors declare the modality of prize distribution in percent, with details and instructions required for payment to indicated persons.
- One printed poster for electronic exhibition, reduced to the dimension 29,7x21 cm (A4), horizontally oriented (landscape) (any of the 5 posters submitted in electronic form for the electronic exhibition, reduced to A4)

The deadline for sending the envelope is **August 08, 2022**

Ensuring anonymity when sending the envelope "AUTHOR" by mail, can be achieved in the following way:

- by sending the ordinary mail without a return receipt with the appropriate number of postage stamps (depending on the country of the sender);
- by sending via express mail service (DHL, Fed Ex,...) with a note for anonymous sending (envelope "AUTHOR" inside the envelope for sending, which does not contain indication of the AUTHOR code).

10.6. Competition deadlines

- Beginning of the competition period / date of announcement **29.03.2022**
The Competition Documentation can be downloaded free of charge from the web site of the Union of Architect of Serbia www.u-a-s.rs or from the link: <https://vinca.konkurs.rs/>
- Participants may submit their questions regarding the competition at latest until **12.05.2022**
Questions and requests for additional information or clarifications are submitted exclusively through the official website: <https://vinca.konkurs.rs/>;
The answers of the jury to the questions asked, exclusively to the questions related to the announcement and the programme of the competition, will be published on the official website of the Competition by **within 10 days**.
- The final deadline for submitting competition designs is **August 08, 2022** until 15:00 (GMT +1).
- The results of the competition shall be announced no later than **September 01, 2022** until 23:59 (GMT +1).
The results will be published on the website of the Union of Architects of Serbia: www.u-a-s.rs and on: <https://vinca.konkurs.rs/>
- Awarded and unawarded designs will be posted in electronic format on the website of the Union of Architects of Serbia www.u-a-s.rs and on <https://vinca.komkurs.rs/> within 30 days from the day of announcing the results of the Competition. Basic information (code of the work, award, name (s) of the authors will be published besides all the works, unless otherwise specified in the application for the Competition.

10.7. Type and amount of awards

If at least **10** design concepts are received until the defined deadline and if they meet the requirements of the competition the following prizes will be awarded in the total net amount of the prize fund of **51,000.00 Euros (€)** to be distributed as follows:

- First Prize.....24,000.00
- Second prize.....14,000.00
- Third prize.....7,000.00
- Two redemptions, each in the amount of.....3,000.00

The Jury will distribute the prizes completely in accordance with the provisions of the Rulebook, however the Jury may distribute the prizes in a different manner within the planned award fund.

The Investor undertakes to make payments for the selected and awarded design concepts in line with the decision of the Jury, and pursuant to the Tender documentation - by means of an announcement to be made within 45 days from the day the Investor acknowledges the Decision of the Jury.

10.8 Composition of the Jury

President of the Jury

Prof. Vesna Cagić Milošević, Architect

Jury members

Bojana Višekruna, Master in Philosophy, Advisor to the Prime Minister for Creative Industries and Science, Government of the Republic of Serbia

prof. Dr. Dubravka Đukanović, Architect, director of the Republic Institute for the Protection of Cultural Monuments

Prof. Goran Rako, Architect

Ilja Mikitišin, Architect

Reporters

Tamara Petrović, Architect

Bojana Mihaljević, Architect

Competition Secretariat:

Union of Architects of Serbia

10.9 Final provisions

- The author of the competition design is the participant who created the competition design and thus published the author's work under his own name by submitting it to the competition. The team of the authors consists of the signatories of design concepts, co-authors and, therefore, the holders of all common copyrights. The participants' copyrights are defined in accordance with the law governing copyright and other related rights.
- By submitting the Design Concept, the authors (a team of authors) assign and transfer all ownership rights of the author to the Investor in case that the subject Design Concept is has been awarded or purchased.
- The awarded and purchased design concepts may be used entirely or partially, and in the course of producing planning and technical documentation, the design concepts will be adjusted to the on-site conditions, namely spatial and technical potentials and limitations.
- The Investor is not obliged to engage the Author as a producer of the planning and technical documentation.
- During the further elaboration of the project, the Contracting Authority will consult the authors of the awarded and / or redeemed designs, whose designs are selected for further elaboration, and the authors will provide consulting services to the extent necessary. Every potential cooperation between the parties shall be regulated by the separate contract.
- Authors reserve the right to publish their design concepts.
- The Investor is entitled to use all the received design concepts, to publish them and to promote results of the competition.

11 ENCLOSURES WITH THE PROGRAMME – BLUEPRINTS AND THE ACCOMPANYING DOCUMENTATION

I INFORMATION GRAPHIC APPENDICES

01 - BOUNDARIES OF THE COMPETITION AREA WITH POSITIONS OF DEFINED DIRECTIONS

02 - BOUNDARIES OF THE COMPETITION AREA WITH PRESENTATION OF SUBUNITS

03 - RESTRICTIONS ON THE COMPETITION AREA

04 - ENGINEERING AND GEOLOGICAL MAP OF THE TERRAIN FROM SPATIAL PLAN FOR THE SPECIAL PURPOSE AREA ARCHAEOLOGICAL SITE BELO BRDO

05 - EXCERPT FROM THE PROJECT OF REPAIR OF THE LANDSLIDE OF THE ARCHAEOLOGICAL SITE BELO BRDO

II GRAPHICAL DIGITAL BASEMAPS AND TABLES

01 - CADASTRAL AND TOPOGRAPHIC PLAN

- 02 - ORTHOPHOTO IMAGE
- 03 - BASEMAP FOR PLANS FOR ALL ANTICIPATED SCALES
- 04 - TABLES FOR BALANCE SHEETS OF ACHIEVED CAPACITIES AND ACHIEVED URBAN PARAMETERS

III GUIDELINES OF COMPETENT INSTITUTIONS

- 01 - PUBLIC WATER MANAGEMENT COMPANY "SRBIJAVODE" - WATER MANAGEMENT CENTRE SAVA - DANUBE
- 02 - PORT GOVERNANCE AGENCY
- 03 - MINISTRY OF CONSTRUCTION, TRANSPORT AND INFRASTRUCTURE - DEPARTMENT FOR WATERWAYS TRANSPORT AND NAVIGATION SAFETY

IV INSERTS FROM URBAN PLANNING AND SPATIAL PLANNING DOCUMENTS

- 01 - EXCERPT FROM THE SPATIAL PLAN FOR SPECIAL PURPOSE AREA ARCHAEOLOGICAL SITE BELO BRDO
- 02 - EXCERPT FROM DETAILED REGULATION PLAN FOR PRIMARY FACILITIES OF BOLEČ SEWERAGE SYSTEM - PHASE I
- 03 - EXCERPT FROM GENERAL REGULATION PLAN OF THE CONSTRUCTION AREA OF THE OFFICE OF LOCAL SELF-GOVERNMENT UNIT OF THE CITY OF BELGRADE - UNIT XX
- 04 - EXCERPT FROM DETAILED REGULATION PLAN FOR THE PART OF THE BELGRADE HIGHWAY AND RAILWAY BYPASS WITH THE ROAD-RAILWAY BRIDGE OVER THE DANUBE

V PHOTO DOCUMENTATION

- 01 - LOCATION PHOTOGRAPHS - CURRENT STATUS
- 02 - VIDEO - CURRENT STATUS
- 03 - ARCHIVE AND HISTORICAL PHOTOGRAPHS

VI OTHER COMPETITION DOCUMENTATION

- 01 - DECISION ON ESTABLISHING THE BELO BRDO SITE IN VINČA FOR ARCHAEOLOGICAL SITE
- 02 - LANDSLIDE REPAIR PROJECT OF ARCHAEOLOGICAL SITE BELO BRDO

In Belgrade, 29.03.2022

The Jury consisting of

President of the Jury:

Prof. Vesna Cagić Milošević, Architect

Jury members:

Bojana Višekruna, Master in Philosophy,

Prof. Dr. Dubravka Đukanović, Architect,

Prof. Goran Rako, Architect

Ilja Mikitišin, Architect